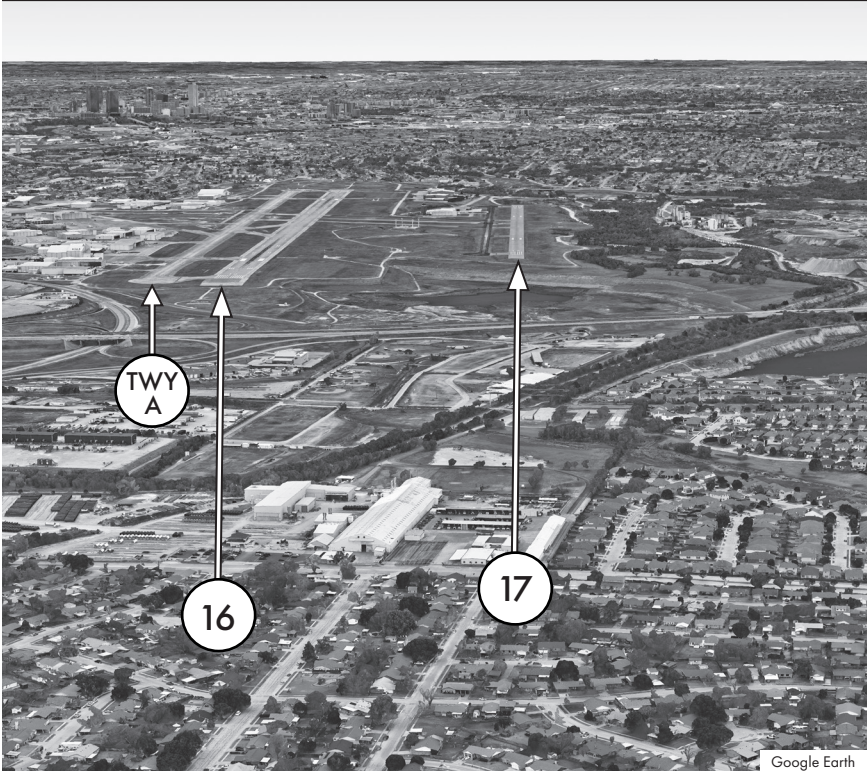

FORT WORTH MEACHAM INTERNATIONAL AIRPORT (FTW) ARRIVAL ALERT

Landing South RWY 16 and RWY 17 and TWY A

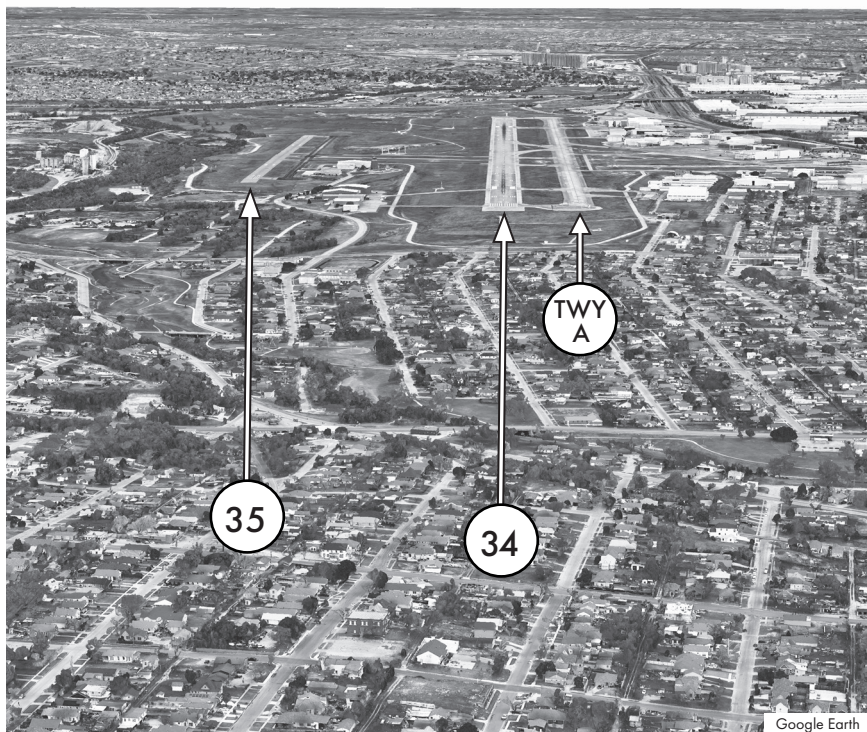


Pilots confuse RWY 17 for RWY 16. RWY 16 is over 3500 ft. longer, twice the width and over 1700 ft. closer than RWY 17. Pilots confuse TWY A for RWY 16.

**Not for Navigational Purposes
For Situational Awareness Only**

FORT WORTH MEACHAM INTERNATIONAL AIRPORT (FTW) ARRIVAL ALERT

Landing North RWY 34 and RWY 35 and TWY A

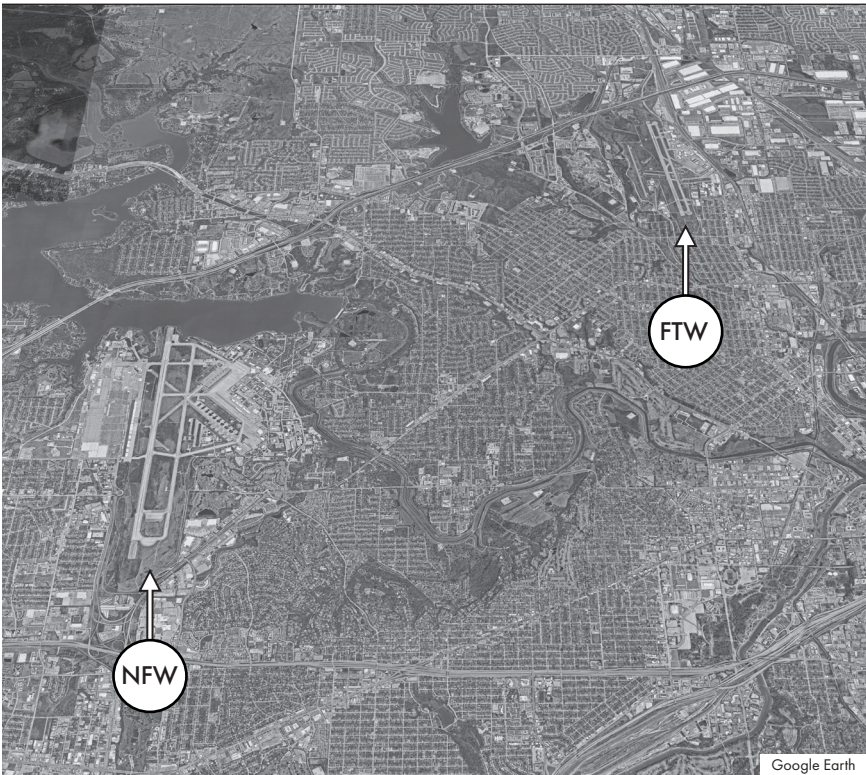


Pilots confuse RWY 35 for RWY 34. RWY 34 is over 3500 ft. longer, twice the width and over 1700 ft. closer than RWY 35. Pilots confuse TWY A for RWY 34.

**Not for Navigational Purposes
For Situational Awareness Only**

FORT WORTH MEACHAM INTERNATIONAL AIRPORT (FTW) ARRIVAL ALERT

Wrong Airport Landing Landing North FTW and JRB Carswell FLD (NFW)



NFW is approximately 5.5 miles Southwest of FTW Airport and its RWY is 4500 ft. longer and 50 ft. wider than FTW RWY 16/34. Pilots confuse NFW RWY 18 with FTW RWY 16. Pilots confuse NFW RWY 36 with FTW RWY 34.

**Not for Navigational Purposes
For Situational Awareness Only**