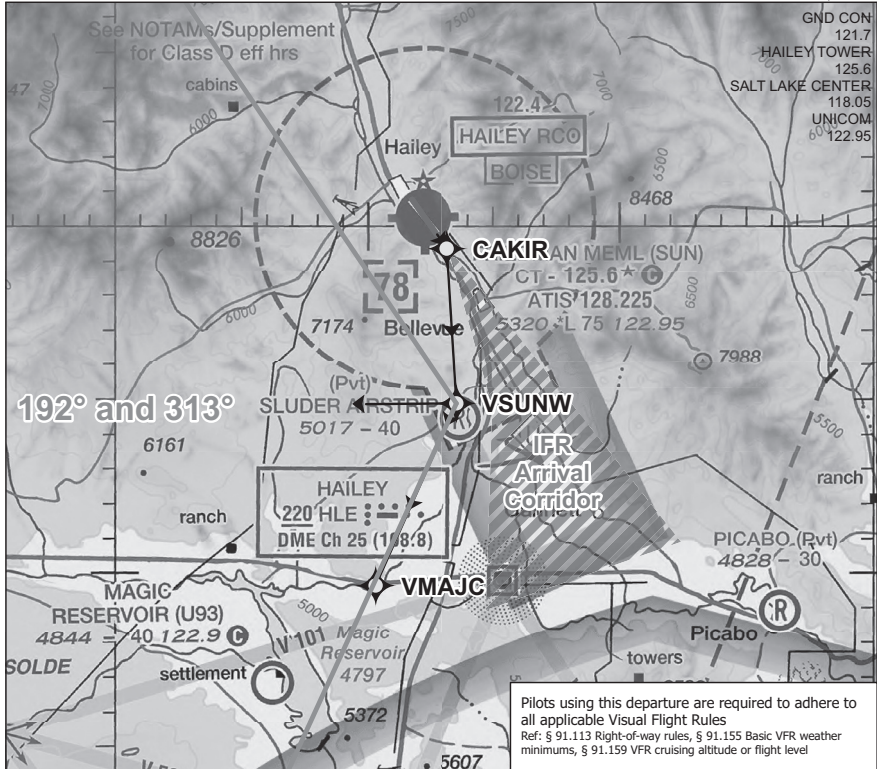


WOOD RIVER 2 (05SEP24)

**WOOD RIVER 2 VFR DEPARTURE (KSUN)**

FRIEDMAN MEML (SUN)

HAILEY, IDAHO

**VFR DEPARTURE ROUTE DESCRIPTION**

**TAKEOFF RUNWAY 13:** After departure fly direct CAKIR then direct VSUNW, if on-course is between 192° and 313°, proceed on course at your discretion; otherwise, direct to VMAJC, or at or above 10,500 proceed on course.

**OR**

After departure fly runway heading for ½ NM beyond runway end, then turn right to approximate heading 163° until over Sluder Airstrip, if on-course is between 192° and 313°, proceed on course at your discretion; otherwise fly approximate heading 192° until south of Highway 20 or through 10,500, then on course.

WOOD RIVER 2 (05SEP24)

## WOOD RIVER 2 VFR DEPARTURE (KSUN)

FRIEDMAN MEML (SUN)  
HAILEY, IDAHO**1. DEFINITIONS:**

- West side of the valley defined as, "west of the Big Wood River to depart the Class D airspace west of Sluder Airstrip. (43° 24' 12.66" / 114° 16' 21.16"W)

**2. PROCEDURE:**

- Pilots should specifically request this procedure using the departure name. "*WOOD RIVER 2 VFR DEPARTURE (KSUN)*"

**3. OPPOSITE DIRECTION:**

- Exercise extreme caution East of Big Wood River, below 10,500' MSL due to opposite direction arrivals.



Office of Primary Responsibility (OPR): KSUN Airport  
 Contact Information: (208) 788-9003  
 Amended: July 2024