

TERMINAL AREA GRAPHIC NOTICE

(Not to be used for navigation)

Teterboro (TEB) Airport Runway 19 Visual Departure Procedure with transition to an IFR clearance when Newark is landing Runway 22 and Teterboro is departing runway 19.

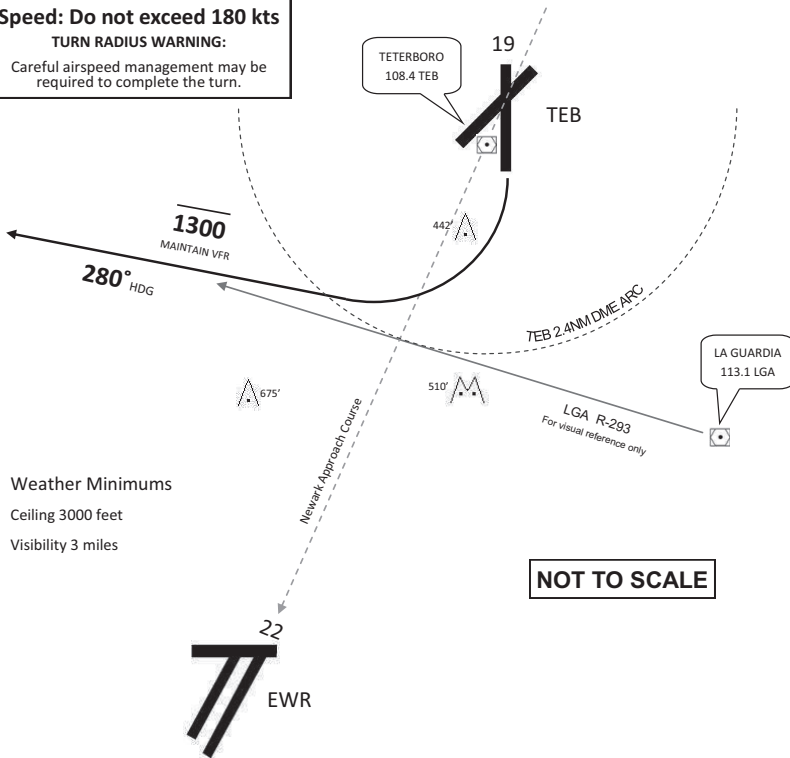
"DALTON 2 DEPARTURE PROCEDURE"

PILOTS SHOULD SPECIFICALLY REQUEST THIS PROCEDURE USING THE ABOVE NAME.

Speed: Do not exceed 180 kts

TURN RADIUS WARNING:

Careful airspeed management may be required to complete the turn.

**Weather Minimums**

Ceiling 3000 feet

Visibility 3 miles

Procedure Instructions

After departure turn right heading **280°**. Maintain at or below **1300'**. Do not exceed **180 kts**. Complete the turn within TEB **2.4 NM DME**. Maintain VFR, if unable advise. Careful airspeed management may be required to complete the turn, depending on takeoff weight and/or aircraft performance.

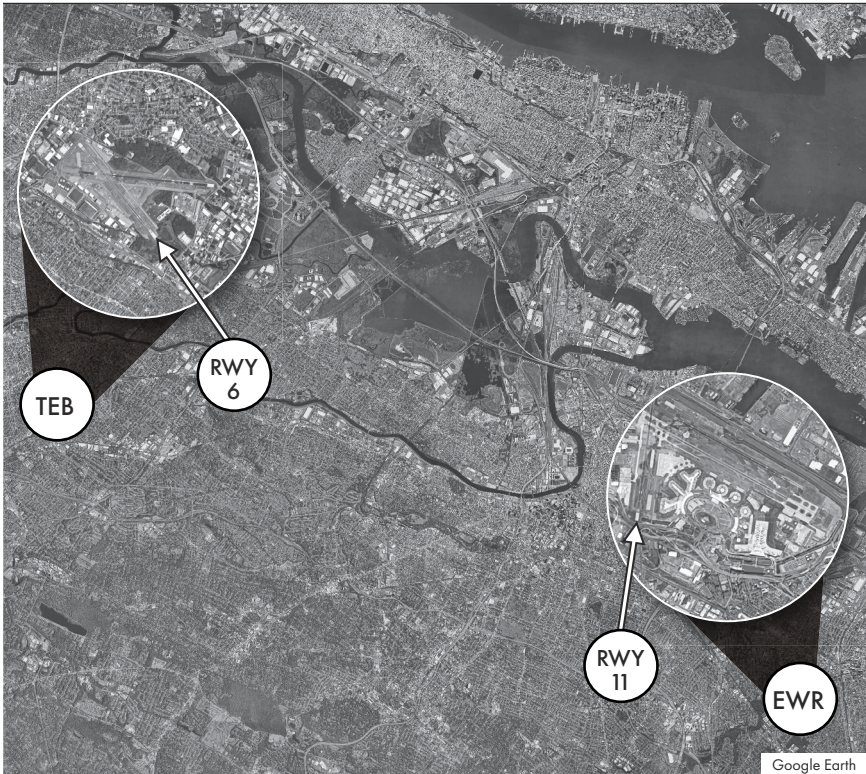
Expect a climb clearance west of the EWR ILS RWY 22 final approach course. The climb clearance constitutes IFR activation and pilots are expected to resume normal airspeed. Expect control instruction to a departure fix as described in the published TEB standard instrument departure.

In the event of lost communication prior to IFR activation, squawk 7600 and maintain VFR.

Aircraft unable to comply with the restrictions in this chart must advise tower prior to taxi and request the published standard instrument departure.

TETERBORO AIRPORT (TEB) ARRIVAL ALERT

Wrong Airport Landing TEB and Newark International Airport (EWR)



TEB and EWR are approximately 11 miles apart. Traffic arriving RWY 06 at TEB sometimes confuse EWR's RWY 11 for their intended runway at TEB.

**Not for Navigational Purposes
For Situational Awareness Only**

Office of Primary Responsibility (OPR): ATO, Runway Safety
Contact Information: (404) 305-6459
Amended: September 2025