
CABAA VISUAL DEPARTURE CHICAGO EXECUTIVE AIRPORT**CABAA Visual- Fort Sheridan Transition RWY 16**

After take-off start assigned turn from Chicago Executive ATCT within 1 NM from the departure end of RWY 16 and remain outside Chicago Class B Airspace. Proceed to Fort Sheridan-VFR waypoint **VPFTS**. When instructed, contact Departure to activate your IFR clearance. Maintain VFR until advised by Departure of activation of IFR clearance.

Climb and maintain VFR at or below 2000' or as assigned.

CABAA Visual- Bangs Lake Transition RWY 16

After take-off start assigned turn from Chicago Executive ATCT within 1 NM from the departure end of RWY 16 and remain outside Chicago Class B Airspace. Proceed to Bangs Lake Wauconda-VFR waypoint **VPBNG**. When instructed, contact Departure to activate your IFR clearance. Maintain VFR until advised by Departure of activation of IFR clearance.

Climb and maintain VFR at or below 2400' or as assigned.

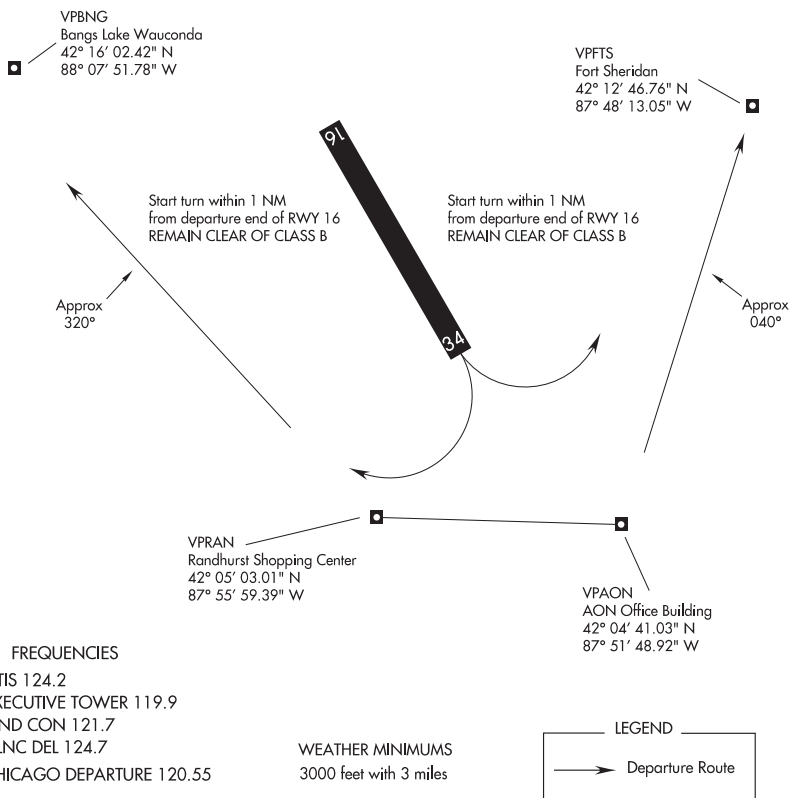
ALL AIRCRAFT REQUESTING THE "CABAA VISUAL DEPARTURE" MUST REMAIN CLEAR OF THE CLASS B AIRSPACE AT ALL TIMES.

TERMINAL AREA GRAPHIC NOTICE
Not to be used for Navigation/Not to Scale

CABAA VISUAL DEPARTURE
CHICAGO EXECUTIVE (PWK)

PILOTS MUST SPECIFICALLY REQUEST THIS PROCEDURE USING THE ABOVE NAME

ALL AIRCRAFT
REQUESTING THE "CABAA VISUAL DEPARTURE" MUST MAINTAIN VFR
AND REMAIN CLEAR OF THE "CHICAGO CLASS B AIRSPACE" AT ALL TIMES



CABAA VISUAL to FORT SHERIDAN Transition Rwy 16

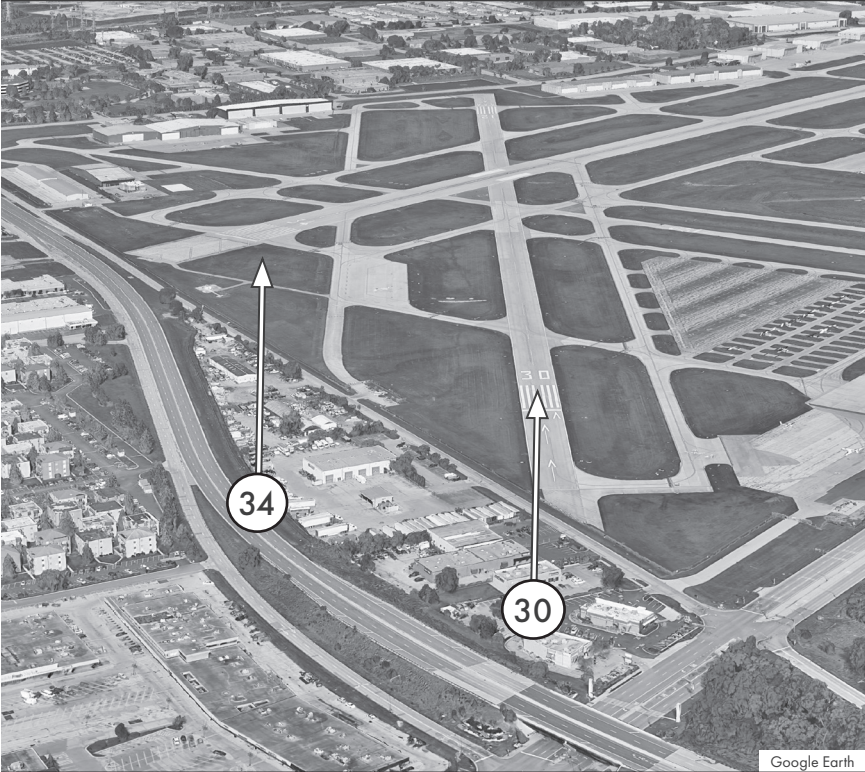
After take-off proceed VFR to Fort Sheridan - VFR waypoint VPFTS. Maintain at or below 2000' or as assigned. Expect a climb clearance in vicinity of Fort Sheridan. ATC will advise activation of IFR Clearance.

CABAA VISUAL to BANGS LAKE Transition Rwy 16

After take-off proceed VFR to Bangs Lake Wauconda - VFR waypoint VPBNG. Maintain at or below 2400' or as assigned. Expect a climb clearance in vicinity of Bangs Lake. ATC will advise activation of IFR Clearance.

CHICAGO EXECUTIVE AIRPORT (PWK) ARRIVAL ALERT

Landing Northwest RWY 34 and RWY 30



Use caution when circling East to land RWY 34 due to RWY 30 in close proximity. Ensure you are aligned with the correct runway and seek clarification from ATC if needed.

**Not for Navigational Purposes
For Situational Awareness Only**