

TOMBSTONE MUNI (P29) P 3 SE UTC-7 N31°40.28' W110°01.29'

PHOENIX
L-5C

4733 NOTAM FILE PRC

RWY 06-24: H4430X60 (ASPH) 1.0% up SW

RWY 06: Brush.

RWY 24: Brush.

AIRPORT REMARKS: Unattended. Gate combination 3214. Numerous trees and bushes between 1 and 15' in height within primary surface. Rwy 06-24 has 2-4 ft vegetation along both sides of rwy.

AIRPORT MANAGER: 520-235-5843

COMMUNICATIONS: CTAF 122.9

CLEARANCE DELIVERY PHONE: For CD ctc Albuquerque ARTCC at 505-856-4861.

TUBA CITY (T03) 5 W UTC-7 N36°05.56' W111°22.99'

LAS VEGAS
H-4J, L-8G

4513 B NOTAM FILE PRC

RWY 15-33: H6230X75 (ASPH) S-12.5 MIRL

RWY 15: PAPI(P2L)—GA 3.0° TCH 40'.

RWY 33: PAPI(P2L)—GA 3.0° TCH 40'.

SERVICE: LGT ACTVT PAPI Rwy 15 and 33; MIRL Rwy 15-33—CTAF.

AIRPORT REMARKS: Unattended. Livestock on arpt. Arpt aces—928-283-2501; gate code: 4513. Rwy 15-33 N 1500 ft sfc undulations up to 8 in.

AIRPORT MANAGER: (505) 728-2804

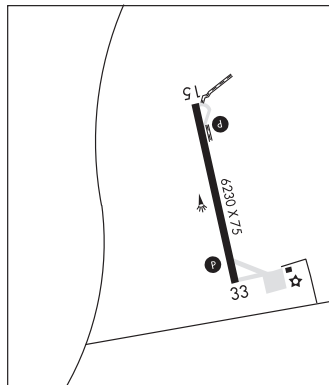
COMMUNICATIONS: CTAF 122.9

RCO 122.05R 113.5T (PRESCOTT RADIO)

RADIO AIDS TO NAVIGATION: NOTAM FILE PRC.

(H) (H) VORTAC 113.5 TBC Chan 82 N36°07.28'

W111°16.18' 238° 5.8 NM to fld. 5045/15E.



TUCSON

RYAN FLD (RYN)(KRYN) 10 SW UTC-7 N32°08.53' W111°10.47'

PHOENIX
H-4J, L-5C
IAP, AD

2419 B TPA—3219(800) NOTAM FILE PRC

RWY 06R-24L: H5500X75 (ASPH) S-12.5, D-30 MIRL

RWY 06R: REIL. PAPI(P4L)—GA 3.0° TCH 53'. Rgt tfc.

RWY 24L: VASI(V4L)—GA 3.0° TCH 26'.

RWY 06L-24R: H4900X75 (ASPH) S-12.5, D-30 MIRL

RWY 06L: REIL. PAPI(P4L)—GA 3.0° TCH 42'.

RWY 24R: PAPI(P4L)—GA 3.0° TCH 42'. Rgt tfc.

RWY 15-33: H4010X75 (ASPH) MIRL 0.8% up S

RWY 15: Rgt tfc.

SERVICE: S4 FUEL 100LL, JET A LGT When ATCT clsd ACTVT PAPI Rwy 06R, 06L, and 24R; VASI Rwy 24L; MIRL Rwy 06R-24L and 15-33—CTAF. Rwy 06R REIL daylight ops only. Rwy 24R PAPI unusbl byd 4.9 NM.

AIRPORT REMARKS: Attended Mon-Fri 1500-0000Z, Sat 1500-0000Z.

Fuel 1500-0000Z; aft hr Jet A fee for on call svc-520-744-7474; self serve 100LL avbl H24 with credit card. Rwy 06R and Rwy 06L preferred to 10 kt tail; aftn winds usually favor Rwy 24L and Rwy 24R. Use Indg lghts in pat. Rwy 06R fqt ILS practice apchs. Note: See Special Notices—Glider Operations Northwest of Tucson, Arizona.

AIRPORT MANAGER: (520) 573-8100

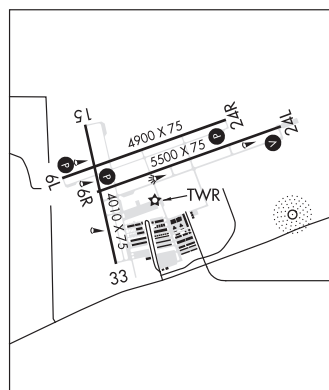
WEATHER DATA SOURCES: AWOS-3 133.35 (520) 578-0269.

COMMUNICATIONS: CTAF 125.8

Ⓡ TUCSON APP/DEP CON 128.5

TOWER 125.8 (1300-0300Z) GND CON 118.2

CLEARANCE DELIVERY PHONE: For CD when ATCT is clsd ctc Tucson Apch at 520-829-6121.



CONTINUED ON NEXT PAGE

CONTINUED FROM PRECEDING PAGE

AIRSPACE: CLASS D svc 1300-0300Z; other times CLASS E.

RADIO AIDS TO NAVIGATION: NOTAM FILE TUS.

TUCSON (H) VORTACW 116.0 TUS Chan 107 N32°05.71' W110°54.89' 270° 13.5 NM to fld. 2671/12E.

VOR unusable:

050°-080° byd 30 NM blo 11,500'

350°-020° byd 30 NM blo 13,000'

TACAN AZIMUTH unusable:

050°-080° byd 30 NM blo 11,500'

155°-165° byd 35 NM blo 13,000'

350°-020° byd 30 NM blo 13,000'

DME unusable:

050°-080° byd 30 NM blo 11,500'

155°-165° byd 35 NM blo 13,000'

350°-020° byd 30 NM blo 13,000'

NDB (HW) 338 RYN N32°08.33' W111°09.69' at fld. 2420/12E. NOTAM FILE PRC. NDB unmonitored.

NDB unusable:

025°-050° byd 25 NM blo 14,500'

ILS/DME 111.1 I-WI Chan 48 Rwy 06R. Class IT.

TUCSON INTL (TUS)(KTUS) P (ANG) 6 S UTC-7 N32°06.96' W110°56.46'

2643 B TPA—See Remarks AOE Class I, ARFF Index C NOTAM FILE TUS

PHOENIX

H-4J, L-5C

IAP, AD

RWY 11L-29R: H10996X150 (ASPH-GRVD) S-160, D-200, 2S-175,

2D-350, 2D/2D2-585 PCN 81 R/B/W/T MIRL

RWY 11L: MALS R. PAPI(P4L)—GA 3.0° TCH 73'. RVR-T 0.7% up.

RWY 29R: REIL. PAPI(P4L)—GA 3.0° TCH 81'. RVR-R Ground. Rgt

tfc. 0.5% down.

RWY 11R-29L: H8408X75 (ASPH) S-120, D-140, 2S-175, 2D-220

PCN 38 F/B/X/T MIRL

RWY 11R: PAPI(P4L)—GA 3.0° TCH 45'. Thld dsplcd 1410'. Rgt tfc.

0.7% up.

RWY 29L: REIL. Pole. 0.6% down.

RWY 03-21: H7000X150 (ASPH-GRVD) S-105, D-137, 2S-174,

2D-230, 2D/2D2-500 PCN 72 F/A/X/T MIRL

RWY 03: Thld dsplcd 850'. Railroad.

RWY 21: REIL. PAPI(P4L)—GA 3.0° TCH 53'. Rgt tfc.

RUNWAY DECLARED DISTANCE INFORMATION

RWY 03: TORA-7000 TODA-7000 ASDA-7000 LDA-6150

RWY 11L: TORA-10996 TODA-10996 ASDA-10996 LDA-10996

RWY 11R: TORA-6998 TODA-6998 ASDA-6998 LDA-6998

RWY 21: TORA-6000 TODA-7000 ASDA-6000 LDA-6000

RWY 29L: TORA-6998 TODA-6998 ASDA-6998 LDA-6998

RWY 29R: TORA-10996 TODA-10996 ASDA-10996 LDA-10996

ARRESTING GEAR/SYSTEM

RWY 11L BAK-14 BAK-12(B) (1000).

BAK-14 BAK-12(B) (1215) HOOK BAK 12(B) (128 OVRN). **RWY 29R**

RWY 03 BAK-14 BAK-12(B) (625).

SERVICE: S4 FUEL 100LL, JET A, A++ OX 1, 2, 3, 4 LGT REIL Rwy 29L and 29R on consly.

MILITARY—A-GEAR BAK-14/BAK-12B apch end Rwy 11L and BAK-14/BAK-12B apch end Rwy 29R, engagements avbl

only dur ANG duty hr and 15 min PN rqr. **JASU** 1(C-26) 1(MD-3) 9(M32A-60) **FUEL** A (avbl 1300-0500Z, OT 2 hr PN

\$50 fee, C520-889-0593.) (NC-100LL) **FLUID** PRESAIR LPOX LOX **OIL** O-133-156(Mil)

AIRPORT REMARKS: Attended continuously. Bird act Phase II in efct 1 July-31 Aug. Air carriers use Rwy 03-21 and Rwy

11L-29R. CAUTION: Rwy 29L shorter narrow rwy south of Rwy 29R. NW arr and dep do not mistake Twy A for Indg sfc;

Twy A is north and parallel to Rwy 29R. Rwy 29R-CAUTION: Ensure dep rwy; Rwy 29L shorter narrow rwy south of Rwy

29R. Rwy 03-21 dstc rming mkr SE side. Flt trng 0500-1300Z not authorized except PPR-520-573-8190. Use upper

antenna until airborne. TPA-3443 (800) small acft, 4043 (1400) large/heavy turbojet acft. Group V taxi with inboard

eng only. Charter, sports team, cargo and mil PPR—airside ops 520-573-8190. Lng and prkg fees 12,500 lb or more.

Rwy end 11R dep climb to 400 ft AGL prior to turn. Rwy 11R-29L sked air carrier ops more than 9 pax seats not

authorized. Dstc rming mkr NE side. USCBP insp ramp rfg not authorized exc med emerg. Portions Twy D not visible fm

ATCT. Twy A5 ltd to 70,000 lb or less. General arpt info 520-573-8182. Review arpt diagram hot spot info. ANG off

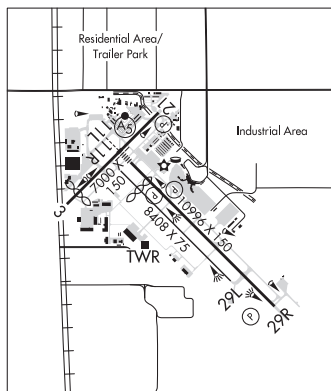
bus only; 72 hr PPR - DB44-6731/C520-295-6731; Fax extn 6732. Base ops 1300-2300Z Mon-Fri and drill wkend

1300-2130Z; clsd otr wkends, hol and sked off days. Tran alert maint not authorized. Tsnt SI FSL only. Contr fuel not

authorized. Mil/Comm/Base ops arr ctc TITAN or PUMA — ANG base ops/comd post freq. Flight Notification Service

(ADCUS) avbl. NOTE: See Special Notices—Glider Operations Northwest of Tucson, Arizona. See Special Notices—Arrival

Alert.



CONTINUED ON NEXT PAGE