

YUMA MCAS/YUMA INTL (NYL)(KNYL) MIL/CIV N 3 S UTC-7 N32°39.39' W114°36.36'

213 B TPA—See Remarks AOE LRA Class I, ARFF Index A NOTAM FILE NYL

PHOENIX

H-4J, L-5A

IAP, DIAP, AD

RWY 03L-21R: H13300X200 (CONC) S-103, D-200, 2D-400

PCN 71 R/C/W/T HIRL

RWY 03L: OLS. PAPI(P4L)—GA 3.0° TCH 53'. Rgt tfc.

RWY 21R: MALS. OLS. PAPI(P4L)—GA 3.0° TCH 50'.

RWY 03R-21L: H9240X150 (ASPH-CONC) S-162, D-200, 2D-400

PCN 59 F/B/W/T HIRL

RWY 03R: OLS. PAPI(P4L)—GA 3.0° TCH 50'. Antenna. Rgt tfc.

RWY 21L: OLS. PAPI(P4L)—GA 3.0° TCH 51'. Road.

RWY 08-26: H6146X150 (ASPH) S-63, D-137, 2D-206

PCN 33 F/B/W/T HIRL

RWY 08: Road. Rgt tfc.

RWY 26: Road.

RWY 17-35: H5710X150 (ASPH) S-72, D-171, 2D-255

PCN 33 F/B/W/T HIRL

RWY 17: VASI(V4L)—GA 3.0° TCH 40'. Tree. Rgt tfc.

RWY 35: REIL. Brush.

RUNWAY DECLARED DISTANCE INFORMATION

RWY 03L:TORA-13300 TODA-13300 ASDA-13300 LDA-13300

RWY 03R:TORA-9240 TODA-9240 ASDA-9240 LDA-9240

RWY 08: TORA-6146 TODA-6146 ASDA-6146 LDA-6146

RWY 17: TORA-5710 TODA-5710 ASDA-5710 LDA-5710

RWY 21L:TORA-9240 TODA-9240 ASDA-9240 LDA-9240

RWY 21R:TORA-13300 TODA-13300 ASDA-13300 LDA-13300

RWY 26: TORA-6146 TODA-6146 ASDA-6146 LDA-6146

RWY 35: TORA-5710 TODA-5710 ASDA-5710 LDA-5710

ARRESTING GEAR/SYSTEM

RWY 03L HOOK E28(B) (3495 FT)

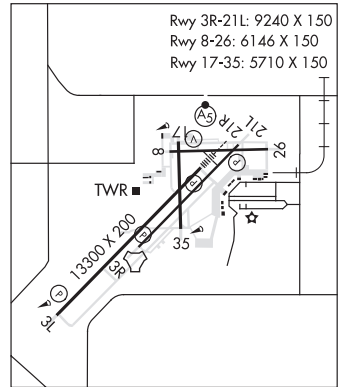
HOOK E28(B) (1699 FT) **RWY 21R**

RWY 03R HOOK E28(B) (2725 FT)

HOOK E28(B) (1675 FT) **RWY 21L**

SERVICE: S2 **FUEL** 100, JET A, A+ **OX** 1, 2, 3, 4 **LGT** When twr clsd, ACTIVATE HIRL Rwy 08-26 and Rwy 17-35 and Twys A, A1, A2, B, C, L, and Z—CTAF. OLS avbl for Rwy 03L, Rwy 21R, Rwy 03R and Rwy 21L. **MILITARY—A-GEAR** For E-28 A-G cond when afld is clsd mnt ATIS. **JASU** 1(NC-10) 1(NCPP-105) **FUEL** F24(Mil)—Avbl O/R for shipbound acft. F24(Mil). A, A+ (FBO: 928-247-9571; 131.225; avbl Mon-Fri 1300-0400Z, Sat-Sun 1300-0100Z, OT 1 hr min PN) (NC-100LL). **FLUID** LOX LHNIT LPOX **OIL** O-156 **TRAN ALERT** VAL/trans svc avbl 1430-0530Z Mon-Fri; 1430-2230Z Sat-Sun; Clsd hol.

AIRPORT REMARKS: Attended continuously. Fuel on call 24 hrs. Mil opr hr 1400-0530Z, mil ramp clsd hol. Mil ops N/A between 1400-1430Z due to afld maintenance. **CAUTION:** All acft avoid overflt Mexican border 7 NM West of arpt. Exty jet trng ops, exer incr'd vigilance. High volume of military acft conducting ops in the local area on UHF frequencies. Pilots opr on VHF frequencies must exer centerline and strict compliance to twr instructions. All acft avoid overflight of MCAS Yuma infrastructure east of main apron. Mandatory all general aviation and air carrier acft opr VFR enter arpt tfc area at 1200' MSL when assigned Rwy 08-26 or Rwy 17-35. Tfc pat for Rwys 03L/R and 21R/L overlap tfc pat for Rwys 08-26 and 17-35. TPA Rwys 08-26 and 17-35 1200(984). TPA for civil turbo-jet acft assign Rwy 03L/R or 21R/L 1700(1487) TPA hel 700(487). TPA Rwys 03L/R right traffic 1700(1487), Rwy 21L/R left traffic 1700(1487). Initial alt for overhead 4000(3784) 6 NM. Initial alt for straight-in 3000(2784) 6 NM. Helos required to enter the arpt tfc area at TPA 1200(987) then descend to 700(487) prior to all rwys. Mandatory all dep general aviation and air carrier acft opr VFR fly rwy hdg after dep and maintain 1200' MSL until outside arpt tfc area unless otherwise apvd by twr. Exty mil jet opr from 4000-3000' MSL descending to 1700' MSL within 6 NM SW straight-in Rwys 03L and Rwy 03R and within 6 NM NE straight-in Rwy 21R and Rwy 21L. Ambulances opr btn 0500-1300Z needing gnd access ctc Civil Airport Authority C928-941-2396 or 376-5868. Twy A2 PCN 33/F/B/W/T, Twy K PCN 30/B/W/T, Twy L PCN 33/F/B/W/T, Twy Z PCN 33/F/B/W/T. Rotary wing acft recoveries not authorized to VTOL pad-4. 650' stopway end Rwy 03L; 1000' stopway end Rwy 21R. 976' stopway end Rwy 03R; 1000' stopway Rwy 21L; 200' stopway end Rwy 26; 1000' stopway end Rwy 08; 800' stopway end Rwy 17 and 250' stopway end Rwy 35. Flight Notification Service (ADCUS) available. U.S. CSTMS port of entry ctc 928-344-9572 or (928) 314-1295. Civil arpt ops ctc 928-726-5882 x 2161 or 928-941-2396.



CONTINUED ON NEXT PAGE

CONTINUED FROM PRECEDING PAGE

MILITARY REMARKS: Opr 1400-0530Z daily. Military ramp clsd hol. Civilian opr ARFF Index B outside military opr hr and hol. See FLIP AP/1, Supplementary Arpt Information. Mil arpt ops-928-269-2077. RSTD Flt clnc manned dur mil opr hr DSN 269-2326/2323/2077, C928-269-2326/2323/2077. PPR all transient acft utilizing mil ramp, 24 hr PN DSN 951-2445/2760 C928-269-2445/2760. Mil acft req to Rwy 03-21 may have priority Mon-Sat over practice apchs. Civilian arpt ops C928-726-5882 extension 2156. When twr clsd ARFF FAA/on Index Don Category is B/1. All mil ops are confined to mil opr hr. When twr is open, ARFF FAA Index/Don Category is E/3. All mil ops are confined to mil opr hrs. DSN 269-2445/2760, C928-269-2445/2760. AV8B vertical/short tkf and ldg to Rwy 03-21 may have priority Mon-Fri over mil multiple practice apch. Range notifications pilots shall go to the following website for safety of flt range notification/restrictions within the R-2507 and R-2301W.
<http://www.mcasyma.marines.mil/resources/rangenotifications.aspx>.

AIRPORT MANAGER: 928-269-3327

WEATHER DATA SOURCES: ASOS ASOS installed at auxiliary landing field by USMC. Yuma in support of training for aviation operations aboard MCAS Yuma. ASOS to provide local use data for USMC training purposes. NWS PHX serves Yuma.

COMMUNICATIONS: CTAF 119.3 ATIS 118.8 273.5 (1430-0530Z daily. Clsd hol, other times by NOTAM) UNICOM 122.95 YUMA RCO 122.2 (PRESCOTT RADIO)

® APP CON 124.7

TOWER 119.3 377.075 (1400-0530Z clsd hol) GND CON 121.9 314.0

DEP CON 125.55 282.325

CLNC DEL 118.0 336.4

COMD POST 337.9 PMSV METRO 120.7 120.725 349.75 (Avbl Mon-Fri 1400-2330Z only)

VFR ADVSY SVC 124.7 371.975

AIRSPACE: CLASS D svc 1400-0530Z, clsd hol; other times CLASS E.

RADIO AIDS TO NAVIGATION: NOTAM FILE NYL.

(L) TACAN Chan 84 NYL (113.7) N32°38.81' W114°36.81' at fld. 193/11E.

BARD (H) VORTAC 116.8 BZA Chan 115 N32°46.09' W114°36.18' 167° 6.7 NM to fld. 130/14E. NOTAM FILE SAN.

VORTAC unusable:

280°-300° byd 27 NM blo 3,600'

ILS 108.3 I-YUM Rwy 21R. Class IE. Localizer unusable byd 25° east and byd 25° west of localizer course.

ASR/PAR

COMM/NAV/WEATHER REMARKS: Radar see Terminal FLIP for Radar Minima.