

CONTINUED FROM PRECEDING PAGE

**RADIO AIDS TO NAVIGATION:** NOTAM FILE DUG.

**DOUGLAS (L) (L) VORTACW** 108.8 DUG Chan 25 N31°28.36' W109°36.12' 268° 38.7 NM to fld. 4131/13E.

DME & TACAN AZIMUTH unusable:  
 045°-065° byd 26 NM blo 10,000'  
 065°-095° byd 28 NM blo 9,500'  
 355°-010° byd 35 NM blo 11,300'

**LIBBY (T) (T) VORW/DME** 113.6 FHU Chan 83 N31°35.38' W110°21.30' at fld. 4665/13E. NOTAM FILE FHU.  
 VOR unmonitored when GCA clsd.

military use: No NOTAM MP 1200-1500Z 4th Thurs of month

VOR unusable:  
 110°-235° byd 10 NM

DME unusable:  
 110°-235° byd 10 NM

**FORT HUACHUCA (T) TACAN** Chan 53 ARH (111.6) N31°35.13' W110°20.34' at fld. 4660/12E. NOTAM FILE FHU. unmonitored when twr clsd.

TACAN unusable:  
 105°-250° byd 10 NM  
 120°-300° byd 20 NM

military use: No NOTAM MP 1200-1500Z 1st Thursday of month

**ILS 109.9 I-FHU** Rwy 26. Class IE. Unmonitored when gca clsd. No NOTAM MP 1200-1500Z 2nd Thursday of Month.

**ASR/PAR** (0600Z Mon-0600Z Sat exc hol, other times by NOTAM). PAR: No NOTAM MP 1200-1500Z 3rd Thursday of month.

**COMM/NAV/WEATHER REMARKS:** When ATCT clsd 121.5 mntd for emerg. USAF wx fcst avbl 1200-0300Z fm Davis Monthan AFB. See Term FLIP for Radar Minima.

• • • • •

**HELIPAD H1:** H40X40 (ASPH) PERIMETER LGTS

**HELIPORT REMARKS:** ACTVT perimeter lgts Helipad H1—CTAF.

**SPRINGVILLE MUNI** (JTC)(KJTC) 1 WSW UTC-7 N34°07.77' W109°18.65'  
 7055 B NOTAM FILE PRC

PHOENIX  
 H-4K, L-5D  
 IAP

**RWY 03-21:** H8422X75 (ASPH) S-30 MIRL

**RWY 03:** PAPI(P2L)—GA 4.0° TCH 46'. 0.4% down.

**RWY 21:** PAPI(P2L)—GA 3.0° TCH 35'. Rgt tfc. 0.6% up.

**RWY 11-29:** H4603X60 (ASPH) S-19 MIRL

**RWY 11:** PAPI(P2L)—GA 3.0° TCH 35'.

**SERVICE:** FUEL 100LL, JET A+ LGT Rwy 03 PAPI does not provide obstacle clearance 2 NM byd thld. ACTVT PAPI Rwy 03 and Rwy 21; MIRL Rwy 03-21; PAPI Rwy 11; MIRL Rwy 11-29—CTAF. (NSTD-5 clicks on; 7 clicks off.

**AIRPORT REMARKS:** Attended 1500-2300Z. For fuel after hrs call 928-245-0151. Mil tfc near arpt. Wildlife on and invof arpt. Density indicators located at fuel pumps.

**AIRPORT MANAGER:** 928-333-5746

**WEATHER DATA SOURCES:** AWOS-3PT 119.65 (928) 333-5716.

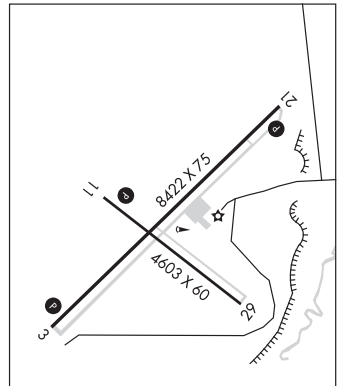
**COMMUNICATIONS:** CTAF/UNICOM 122.8

® ALBUQUERQUE CENTER APP/DEP CON 132.9

**CLEARANCE DELIVERY PHONE:** For CD ctc Albuquerque ARTCC at 505-856-4861.

**RADIO AIDS TO NAVIGATION:** NOTAM FILE SJN.

**ST JOHNS (H) (H) VORTAC** 112.3 SJN Chan 70 N34°25.44' W109°08.61' 193° 19.5 NM to fld. 6840/12E.



**STANFIELD** N32°53.15' W111°54.52' NOTAM FILE PRC.  
 (H) (H) VORTAC 114.8 TFD Chan 95 048° 8.3 NM to Casa Grande Muni. 1316/12E.  
 RCO 122.1R 114.8T (PRESCOTT RADIO)

PHOENIX  
 H-4J, L-5B, A

**STELLAR AIRPARK** (See CHANDLER on page 38)

**SUN VALLEY** (See BULLHEAD CITY on page 36)