

**SIERRA VISTA MUNI—LIBBY AAF** (FHU)(KFHU) MIL/CIV A 3 N UTC-7 N31°35.31' W110°20.66'

**PHOENIX**

4719 B TPA—See Remarks NOTAM FILE FHU  
**RWY 08-26:** H12001X150 (CONC) S-75, D-200, 2D-450,  
 2D/2D2-700 PCN 54 R/B/W/T HIRL 1.0% up W

**H-4K, L-5C**  
**IAP, DIAP, AD**

**RWY 08:** PAPI(P4L)—GA 3.0° TCH 50'.

**RWY 26:** PAPI(P4L)—GA 3.0° TCH 80'. Rgt tfc.

**RWY 12-30:** H5366X100 (ASPH-CONC) S-46, D-106, 2D-137,  
 2D/2D2-172 PCN 24 F/A/W/T MIRL

**RWY 12:** PAPI(P4L)—GA 3.0° TCH 51'.

**RWY 30:** PAPI(P4R)—GA 3.0° TCH 51'. Rgt tfc.

**RWY 03-21:** H4285X75 (ASPH-CONC) PCN 22 F/A/W/T MIRL  
 2.0% up SW

**RWY 03:** Thld dspclcd 1253'.

**RWY 21:** Rgt tfc.

**RUNWAY DECLARED DISTANCE INFORMATION**

**RWY 03:** TORA-4285 TODA-4285 ASDA-4285 LDA-3032

**RWY 08:** TORA-12001 TODA-12001 ASDA-12001 LDA-12001

**RWY 12:** TORA-5366 TODA-5366 ASDA-5366 LDA-5366

**RWY 21:** TORA-4285 TODA-4285 ASDA-4285 LDA-4285

**RWY 26:** TORA-12001 TODA-12001 ASDA-12001 LDA-12001

**RWY 30:** TORA-5366 TODA-5366 ASDA-5366 LDA-5366

**SERVICE:** FUEL 100, JET A LGT ACTIVATE PAPI Rwy 08, 26, 12 and

30, HIRL Rwy 08-26, MIRL Rwy 03-21 and 12-30 and perimeter lgt H1—CTAF. FUEL Fuel avbl 1330-0100Z Mon-Fri; exc hol. otr times 24 hr PN—D879-2860/62. POL svc rqr crew atnd to specify fuel/oil rqmnts. Fuel lmtcd to 6000 gal. J8 (NC-100, A) **TRAN ALERT** Tstnt ctc Libby ATC or BAOPS to coord prkg.

**AIRPORT REMARKS:** Attended Mon-Fri 1400-2230Z. Fuel avbl 1400-2230Z Mon-Fri; exc wkend and hol; aft hr—520-234-3552 svc fee. Mil jet ops wkdays; bird haz invof rwys on tkof and apch; deer on and invof arpt spcly at night. When Class D asp in efct unmanned aerial vehicles opr sfc—7000 ft MSL. Bird haz exists all rwys. Asp Class D sfc area lmtcd to dep and FSL durg ngt unmanned acft ops; exp delays. Manned and unmanned acft not auth in same tfc pat. Manned arr may flw unmanned acft on FNA. Civil tfc pat unavbl durg dalgt unmanned acft tfc pat ops; dep and FSL auth. Non scheduled arriving acft rqrq assistance, ctc GOC 533-2291/2292. TPA—fixed wing north; rotary wing south; alt fixed wing reciprocating 5700 ft; rotor wing 5500 ft; fixed wing turboprop/jet 6200 ft. Twy G and J lmtcd to single wheel acft max 33,000 lb; Twy K lmtcd to single wheel acft max 50,000 lb; Twy D and acft apron on NW side lmtcd to dual wheel acft max 100,000 lb. Crcg S of Rwy 08 and 30 na. NOTE: See Special Notices—Tethered Arostat Radar System (TARS).

**MILITARY REMARKS:** Opr 0600-0600Z Sun-Sat; exc hol. Otr time 72 hr PPR—D879-2860/2862/C520-538-2860/2862. See flip AP/1 supplementary arpt rmk. **RSTD** 24 hr PPR for tntst mil; civ acft PPR to enter mil ramp. Twy G lmtcd to single wheel acft max 33,000 lbs, Twy K lmtcd to single wheel acft max 50,000 lbs. Circling not authorized South of Rwy 08 and Rwy 30. **CAUTION** Exp ws all rwys; arpt SW wind may not rep wind on FNA. Extv mil jet ops wkdays. **CSTMS/AG/IMG** Avbl with 72 hr PN for US mil or DoD contr acft only. **TFC PAT** 981 ft AGL fixed wing unmanned acft. Do not exceed 5,700 ft until der. **MISC** Tstnt and RON acft using mil side sign in at BAOPS prior to depg fit line. Assault strip 5 NM NE 72 hr ppr. Nonsked arr rqrq asst—EOC 533-2291. Prkg mil tntst sign in at BASOPS prior to lv fit line. Wx obsn/fcst 0600-0600Z Sun-Fri; exc hol. Otr times ASOS. Libby wx avbl—122.95 D879-3798/2865/C520-538-3798/2865. Remote briefing svc avbl 25 OWS Davis-Monthan AFB D228-6598/6599/6588/C520-228-6598/6599/6588 or <https://25ows.us.af.mil>. A Libby BAOPS 0600-0600Z Sun-Sat; exc hol; other times 72 hr PPR. D879-2860/2862, C520-538-2860/2862.

**AIRPORT MANAGER:** 520-458-5775

**WEATHER DATA SOURCES:** ASOS

**COMMUNICATIONS:** CTAF 124.95 ATIS 134.75 263.025 UNICOM 122.95

① **LIBBY AAF GCA APP/DEP CON** 127.05 254.25 (BAOPS Mon 0600Z-Sat 0600Z; exc hol. Otr time 72 hr PPR—D879-2862/2860/C520-538-2862/2860.)

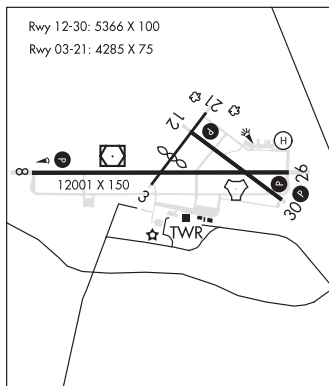
② **ALBUQUERQUE CENTER APP/DEP CON** 134.45 327.15

LIBBY TOWER 124.95 284.75 (0600Z Mon-0600Z Sat; exc hol, other times by NOTAM).

GND CON 121.7 268.7

LIBBY OPS 122.95

**AIRSPACE:** CLASS D svc Mon 0600-Sat 0600Z exc hol, other times by NOTAM; other times CLASS G..



**CONTINUED ON NEXT PAGE**

CONTINUED FROM PRECEDING PAGE

**RADIO AIDS TO NAVIGATION:** NOTAM FILE DUG.

**DOUGLAS (L) (L) VORTACW** 108.8 DUG Chan 25 N31°28.36' W109°36.12' 268° 38.7 NM to fld. 4131/13E.

DME & TACAN AZIMUTH unusable:  
 045°-065° byd 26 NM blo 10,000'  
 065°-095° byd 28 NM blo 9,500'  
 355°-010° byd 35 NM blo 11,300'

**LIBBY (T) (T) VORW/DME** 113.6 FHU Chan 83 N31°35.38' W110°21.30' at fld. 4665/13E. NOTAM FILE FHU.

VOR unmonitored when GCA clsd.  
 military use: No NOTAM MP 1200-1500Z 4th Thurs of month  
 VOR unusable:

110°-235° byd 10 NM  
 DME unusable:  
 110°-235° byd 10 NM

**FORT HUACHUCA (T) TACAN** Chan 53 ARH (111.6) N31°35.13' W110°20.34' at fld. 4660/12E. NOTAM FILE FHU. unmonitored when twr clsd.

TACAN unusable:  
 105°-250° byd 10 NM  
 120°-300° byd 20 NM  
 military use: No NOTAM MP 1200-1500Z 1st Thursday of month

**ILS** 109.9 I-FHU Rwy 26. Class IE. Unmonitored when gca clsd. No NOTAM MP 1200-1500Z 2nd Thursday of Month.

**ASR/PAR** (0600Z Mon-0600Z Sat exc hol, other times by NOTAM). PAR: No NOTAM MP 1200-1500Z 3rd Thursday of month.

**COMM/NAV/WEATHER REMARKS:** When ATCT clsd 121.5 mntd for emerg. USAF wx fcst avbl 1200-0300Z fm Davis Monthan AFB. See Term FLIP for Radar Minima.

• • • • •

**HELIPAD H1:** H40X40 (ASPH) PERIMETER LGTS

**HELIPORT REMARKS:** ACTVT perimeter lgts Helipad H1—CTAF.

**SPRINGVILLE MUNI** (JTC)(KJTC) 1 WSW UTC-7 N34°07.77' W109°18.65'  
 7055 B NOTAM FILE PRC

**PHOENIX**  
 H-4K, L-5D  
 IAP

**RWY 03-21:** H8422X75 (ASPH) S-30 MIRL

**RWY 03:** PAPI(P2L)—GA 4.0° TCH 46'. 0.4% down.  
**RWY 21:** PAPI(P2L)—GA 3.0° TCH 35'. Rgt tfc. 0.6% up.

**RWY 11-29:** H4603X60 (ASPH) S-19 MIRL

**RWY 11:** PAPI(P2L)—GA 3.0° TCH 35'.

**SERVICE:** FUEL 100LL, JET A+ LGT Rwy 03 PAPI does not provide obstacle clearance 2 NM byd thld. ACTVT PAPI Rwy 03 and Rwy 21; MIRL Rwy 03-21; PAPI Rwy 11; MIRL Rwy 11-29—CTAF. (NSTD-5 clicks on; 7 clicks off.

**AIRPORT REMARKS:** Attended 1500-2300Z. For fuel after hrs call 928-245-0151. Mil tfc near arpt. Wildlife on and invof arpt. Density indicators located at fuel pumps.

**AIRPORT MANAGER:** 928-333-5746

**WEATHER DATA SOURCES:** AWOS-3PT 119.65 (928) 333-5716.

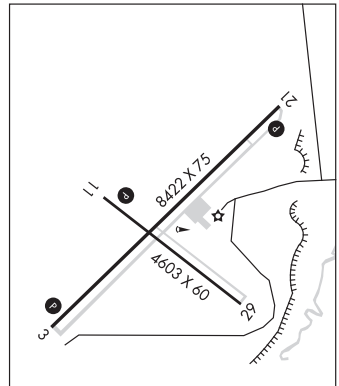
**COMMUNICATIONS:** CTAF/UNICOM 122.8

® **ALBUQUERQUE CENTER APP/DEP CON** 132.9

**CLEARANCE DELIVERY PHONE:** For CD ctc Albuquerque ARTCC at 505-856-4861.

**RADIO AIDS TO NAVIGATION:** NOTAM FILE SJN.

**ST JOHNS (H) (H) VORTAC** 112.3 SJN Chan 70 N34°25.44' W109°08.61' 193° 19.5 NM to fld. 6840/12E.



**STANFIELD** N32°53.15' W111°54.52' NOTAM FILE PRC.  
 (H) (H) **VORTAC** 114.8 TFD Chan 95 048° 8.3 NM to Casa Grande Muni. 1316/12E.  
 RCO 122.1R 114.8T (PRESCOTT RADIO)

**PHOENIX**  
 H-4J, L-5B, A

**STELLAR AIRPARK** (See CHANDLER on page 38)

**SUN VALLEY** (See BULLHEAD CITY on page 36)