

POLACCA (P1Ø) 3 SW UTC-7 N35°47.50' W110°25.40'
 5573 TPA—6398(825) NOTAM FILE PRC
RWY 04-22: H4200X50 (ASPH) 0.3% up NE
RWY 04: Brush.
RWY 22: Brush.

DENVER
L-8G

AIRPORT REMARKS: Unattended. Rwy 04-22 has numerous large cracks, holes, rough surface, patches and loose rock, 8 in to 10 in high grass and weeds in cracks. Rocks piled, in circle, around wind indicator. Rwy 04-22, 1-5' brush 45' from centerline both sides full length of rwy. Rwy 04 cntrln markings only—extremely faded. Rwy 22 cntrln markings only—extremely faded. Road crossing rwy. Wash in safety zone. This arpt underlies a Military Operations Area (MOA). Pilots need to be aware of all restrictions and check for any NOTAMS in advance of flying through the MOA. Solar powered blue perimeter lgts at corners of parking ramp.

AIRPORT MANAGER: (928) 734-3243

COMMUNICATIONS: CTAF 122.9

CLEARANCE DELIVERY PHONE: For CD ctc Denver ARTCC at 303-651-4257.

RADIO AIDS TO NAVIGATION: NOTAM FILE PRC.

TUBA CITY (VH) (H) VORTAC 113.5 TBC Chan 82 N36°07.28' W111°16.18' 100° 45.7 NM to fld. 5045/15E.

VOR unusable:

- 089°-160° byd 40 NM
- 183°-202° byd 40 NM
- 207°-231° byd 40 NM
- 235°-245° byd 40 NM
- 275°-053° byd 40 NM

PRESCOTT RGNL — ERNEST A LOVE FLD (PRC)(KPRC) 7 N UTC-7 N34°39.29' W112°25.15'
 5045 B TPA—See Remarks ARFF Index—See Remarks NOTAM FILE PRC MON Airport

PHOENIX
H-4J, L-8F
IAP, AD

RWY 03R-21L: H7619X150 (ASPH-PFC) S-63, D-80, 2S-101, 2D-100 PCN 8 F/D/Y/T MIRL 0.9% up SW
RWY 03R: REIL. PAPI(P4L)—GA 4.1° TCH 45'. Thld dsplcd 380'. Road.

RWY 21L: MALSR. PAPI(P4L)—GA 3.0° TCH 55'. Rgt tfc.

RWY 03L-21R: H4846X60 (ASPH) S-12.5 PCN 2 F/D/X/T MIRL 0.8% up SW

RWY 03L: PAPI(P2L)—GA 3.0° TCH 41'. Thld dsplcd 811'. Rgt tfc.

RWY 21R: PAPI(P2L)—GA 3.0° TCH 41'. Rgt tfc.

RWY 12-30: H4408X75 (ASPH) S-12.5 PCN 10 F/C/Y/T MIRL 0.6% up SE

RWY 12: REIL. PAPI(P2L)—GA 4.24° TCH 52'. Thld dsplcd 150'.

RWY 30: REIL. PAPI(P2L)—GA 3.6° TCH 44'.

LAND AND HOLD—SHORT OPERATIONS

LDG RWY	HOLD—SHORT POINT	AVBL LDG DIST
RWY 21L	12-30	5904

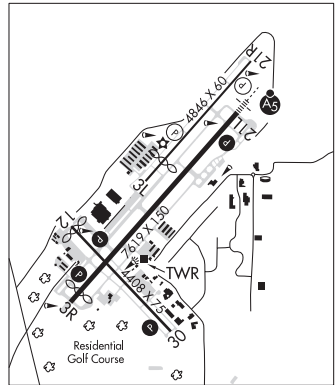
RUNWAY DECLARED DISTANCE INFORMATION

RWY 03L: TORA-4846	TODA-4846	ASDA-4846	LDA-4037
RWY 03R: TORA-7619	TODA-7619	ASDA-7619	LDA-7240
RWY 12: TORA-4408	TODA-4408	ASDA-4408	LDA-4258
RWY 21L: TORA-7619	TODA-7619	ASDA-7619	LDA-7619
RWY 21R: TORA-4846	TODA-4846	ASDA-4608	LDA-4608
RWY 30: TORA-4408	TODA-4408	ASDA-4258	LDA-4308

SERVICE: S4 FUEL 100LL, JET A LGT Rwy 30 PAPI unusable byd 3 NM. After 0500Z—ACTVT MALSR Rwy 21L; REIL Rwy 03R; PAPI Rwy 03R and Rwy 21L—CTAF. ACTVT REIL Rwy 12 and Rwy 30, PAPI Rwy 12 and Rwy 30, MIRL Rwy 12-30—128.75.

NOISE: Voluntary noise abatement procedures in effect—ctc arpt opr 928-777-1150.

AIRPORT REMARKS: Attended 1300-0500Z. Fuel avbl 1300-0400Z call 928-443-9333; aft hrs avbl per advance request. Self service fuel rstrd to acct with wingspan 50 ft or less. Rwy 03L-21R CLOSED 0500-1300Z. Wildlife inofv rwys and twys. Field conditions (FICON) not monitored 2200-0600 local. Class I, ARFF Index A. ARFF Index B available upon request. Actf depg Rwy 21L continue ry heading until across hwy and make immediate left turn. 20 ft drop-off 300 ft from apch end Rwy 12. Rwy 21L designated calm wind rwy. Use caution on Rwy 12-30 for chg in rwy grad at Rwy 03R-21L int. Rwy 03L-21R not avbl for air carrier ops. Rwy 12-30 not avbl for air carrier ops. Winch tow in use up to 2500 ft AGL approx 6NM east of Goodwin Memorial Gliderport. Overnight parking fee. ILS unmon when ATCT clsd. TPA for light acct all rwys 6045(1000). TPA for large acct, all turbo prop/jet and high perf acct all rwys 6545(1500). Landing fee for transient commercial acr 12500 lbs or greater based upon maximum certificated landing weight. NOTE: See Special Notices—Extensive Flight Training in the vicinity of Ernest A. Love Field, Prescott, AZ.



CONTINUED ON NEXT PAGE

CONTINUED FROM PRECEDING PAGE

AIRPORT MANAGER: (928) 777-1114

WEATHER DATA SOURCES: ASOS 127.2 (928) 541-3850.

COMMUNICATIONS: CTAF 125.3 ATIS 127.2 UNICOM 122.95

PRESCOTT RCO 122.2 (PRESCOTT RADIO)

® PHOENIX APP/DEP CON 133.575

PRESCOTT TOWER 125.3 (1300-0500Z) GND CON 121.7 PRESCOTT CLNC DEL 119.25

CLEARANCE DELIVERY PHONE: For CD when ATCT clsd, ctc Phoenix Apch at 602-306-2565.

AIRSPACE: CLASS D svc 1300-0500Z; other times CLASS E.

VOR TEST FACILITY (VOT) 110.0

RADIO AIDS TO NAVIGATION: NOTAM FILE PRC.

DRAKE (VH) (H) VORTAC 114.1 DRK Chan 88 N34°42.15' W112°28.82' 119° 4.2 NM to fld. 4966/14E.

VOR unusable:

055°-080° byd 29 NM blo 9,300'
 065°-079° byd 40 NM blo 22,000'
 125°-140° byd 35 NM blo 8,500'
 128°-230° byd 40 NM
 140°-160° byd 30 NM blo 9,500'
 160°-175° byd 35 NM blo 9,500'
 175°-185° byd 30 NM blo 9,500'
 185°-195° byd 23 NM blo 9,100'
 195°-220° byd 13 NM blo 9,100'
 220°-235° byd 25 NM blo 9,100'
 233°-243° byd 40 NM blo 18,000'
 265°-275° byd 30 NM blo 8,800'
 266°-274° byd 40 NM

TACAN AZIMUTH unusable:

055°-080° byd 29 NM blo 9,300'
 125°-140° byd 35 NM blo 8,500'
 140°-160° byd 30 NM blo 9,500'
 160°-175° byd 35 NM blo 9,500'
 175°-185° byd 30 NM blo 9,500'
 185°-195° byd 23 NM blo 9,100'
 195°-220° byd 13 NM blo 9,100'
 220°-235° byd 25 NM blo 9,100'
 265°-275° byd 30 NM blo 8,800'

DME unusable:

055°-080° byd 29 NM blo 9,300'
 125°-140° byd 35 NM blo 8,500'
 140°-160° byd 30 NM blo 9,500'
 160°-175° byd 35 NM blo 9,500'
 175°-185° byd 30 NM blo 9,500'
 185°-195° byd 23 NM blo 9,100'
 195°-220° byd 13 NM blo 9,100'
 220°-235° byd 25 NM blo 9,100'
 265°-275° byd 30 NM blo 8,800'

ILS/DME 108.5 I-PRC Chan 22 Rwy 21L. Class IA. ILS/DME unmonitored 0500-1300Z.

ROBLES N32°04.46' W111°21.61' NOTAM FILE PRC.

NDB (MHW) 220 RBJ 2611/12E. NDB unmonitored.

PHOENIX
L-5C**ROLLE AIRFIELD** (See SAN LUIS on page 82)**RYAN FLD** (See TUCSON on page 95)