

SEDONA (SEZ)(KSEZ) 2 SW UTC-7 N34°50.92' W111°47.31'
 4831 B TPA—See Remarks NOTAM FILE SEZ
RWY 03-21: H5132X100 (ASPH) S-15, D-30 MIRL 1.8% up NE
RWY 03: REIL. PAPI(P4L)—GA 3.0° TCH 44'.
RWY 21: REIL. PAPI(P4L)—GA 3.5° TCH 49'. Fence.
SERVICE: S2 FUEL 100LL, JET A LGT ACTVT REIL Rwy 03 and Rwy 21; PAPI Rwy 03 and Rwy 21; MIRL Rwy 03-21—CTAF. Rwy 21 PAPI unusbl byd 2.0 NM.

NOISE: No touch and go ldrs noise sensitive area. Noise sensitive area avoid scenic flights blo 6500' MSL.

AIRPORT REMARKS: Attended May-Sep 1400-0100Z, Oct-Apr 1400-0000Z. Bird and wildlife on and invof arpt. Fueling oprs stop 30 minutes prior to closing. Turbulence may be experienced invof arpt. When ldg Rwy 21, during strong southwest wind conditions, strong down drafts are very probable northeast of apch end of Rwy 21. Helicopter ops restricted to helipads adjacent to twy intersection A7 southwest main terminal building. Helicopter operating from private helipads south and west of Rwy 03-21. Rwy 03 calm wind rwy. Rwy 03 has an uphill slope. Overnight transient fee for all users. Landing fee for turbine acft without fuel purchase. TPA—prop 6004(1173) Jet 7004(2173).

AIRPORT MANAGER: 928-282-4487

WEATHER DATA SOURCES: AWOS-3PT 118.525 (928) 282-1993.

COMMUNICATIONS: CTAF/UNICOM 123.0

COTTONWOOD RCO 122.3 (PRESCOTT RADIO)

® PHOENIX APP/DEP CON 126.375

RADIO AIDS TO NAVIGATION: NOTAM FILE FLG.

FLAGSTAFF (H) (H) VOR/DME 113.85 FLG Chan 85(Y) N35°08.83' W111°40.45' 184° 18.8 NM to fld. 7026/14E.

VOR/DME unusable:

335°-030° byd 19 NM blo 24,000'

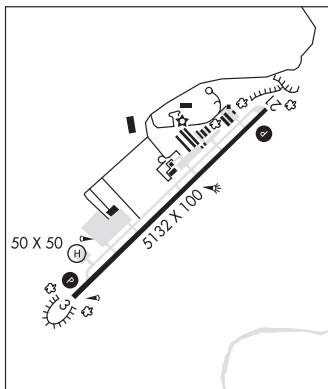
DME unusable:

230°-255° byd 20 NM blo 15,000'

ASR/PAR

• • • • •
HELIPAD H1: H50X50 (CONC)

HELIPORT REMARKS: Rwy H1 flood lgts.



PHOENIX
 H-4J, L-8G
 IAP

SELIGMAN (P23) 1 NW UTC-7 N35°20.10' W112°53.19'
 5237 B NOTAM FILE PRC

PHOENIX
 L-8F

RWY 04-22: H4800X75 (ASPH) MIRL

RWY 04: REIL. PAPI(P2L)—GA 3.0°.

RWY 22: REIL. PAPI(P2L)—GA 3.0°. Rgt tfc.

SERVICE: LGT ACTIVATE MIRL Rwy 04-22 REIL Rwy 04 and Rwy 22 7-clicks—CTAF. PAPI Rwy 04 and Rwy 22 opr dalgt hrs, at night ACTIVATED on CTAF.

AIRPORT REMARKS: Unattended. Drainage channel both sides full length of Rwy 04-22, varies in width and depth.

AIRPORT MANAGER: (928) 777-7549

COMMUNICATIONS: CTAF 122.9

RCO 122.6 (PRESCOTT RADIO)

CLEARANCE DELIVERY PHONE: For CD ctc Los Angeles ARTCC at 661-575-2079.

RADIO AIDS TO NAVIGATION: NOTAM FILE PRC.

PEACH SPRINGS (H) (H) VOR/DME 112.0 PGS Chan 57 N35°37.48' W113°32.67' 103° 36.6 NM to fld. 4760/15E.

VOR unusable:

205°-225° byd 30 NM blo 10,500'

DME unusable:

205°-225° byd 30 NM blo 10,500'