

TOMBSTONE MUNI (P29) P 3 SE UTC-7 N31°40.28' W110°01.29'
4743 NOTAM FILE PRC

PHOENIX
L-5C

RWY 06-24: H4430X60 (ASPH)

RWY 06: Brush.

RWY 24: Brush.

AIRPORT REMARKS: Unattended. Gate combination 3214. Numerous trees and bushes between 1 and 15' in height within primary surface. Rwy 06-24 has 2-4' vegetation along both sides of rwy.

AIRPORT MANAGER: 520-235-5843

COMMUNICATIONS: CTAF 122.9

CLEARANCE DELIVERY PHONE: For CD ctc Albuquerque ARTCC at 505-856-4861.

TUBA CITY (TØ3) 5 W UTC-7 N36°05.56' W111°22.99'
4513 B NOTAM FILE PRC

LAS VEGAS
H-4I, L-8G

RWY 15-33: H6230X75 (ASPH) S-12.5 MIRL

RWY 15: VASI(V2L)—GA 3.0° TCH 40'.

RWY 33: VASI(V2L)—GA 3.0° TCH 40'.

SERVICE: LGT ACTIVATE MIRL Rwy 15-33, VASI Rwy 15 and Rwy 33—CTAF.

AIRPORT REMARKS: Unattended. Livestock on airport. Arpt access by calling security department at 928-283-2501. Gate code: 4513.

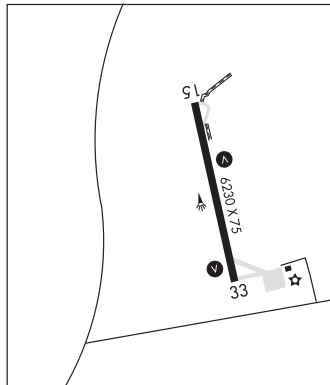
AIRPORT MANAGER: (505) 728-2804

COMMUNICATIONS: CTAF 122.9

RCO 122.05R 113.5T (PRESCOTT RADIO)

RADIO AIDS TO NAVIGATION: NOTAM FILE PRC.

(H) **VORTAC** 113.5 TBC Chan 82 N36°07.28'
W111°16.18' 238° 5.8 NM to fld. 5045/15E.



TUCSON

RYAN FLD (RYN)(KRYN) 10 SW UTC-7 N32°08.53' W111°10.47'
2419 B TPA—3219(800) NOTAM FILE PRC

PHOENIX
H-4I, L-5C
IAP AD

RWY 06R-24L: H5500X75 (ASPH) S-12.5, D-30 MIRL

RWY 06R: REIL. Rgt tfc.

RWY 24L: VASI(V4L)—GA 3.0° TCH 26'.

RWY 06L-24R: H4900X75 (ASPH) S-12.5, D-30 MIRL

RWY 06L: REIL.

RWY 24R: Rgt tfc.

RWY 15-33: H4010X75 (ASPH) MIRL 0.8% up S

RWY 15: Rgt tfc.

SERVICE: S4 FUEL 100LL, JET A LGT When ATCT clsd ACTVT MIRL
Rwy 06R-24L and Rwy 15-33—CTAF. REIL Rwy 06R opr dalgt hrs only.

AIRPORT REMARKS: Attended Mon-Fri 1500-0000Z, Sat 1500-0000Z.
Fuel is avbl from 1500Z to 0000Z, after hrs, Jet A avbl as an on-call svc, and a \$100 fee applies. Prior arrangements can be made by calling 520-744-7474, self serve 100LL avbl 24 hrs with major credit card. Frequent practice of ILS approaches to Rwy 06R. Rwy 06R and Rwy 06L preferential rwy up to 10 knot tailwind. Afternoon winds usually favor Rwy 24L and Rwy 24R. Use landing lights in pattern.
Note: See Special Notices—Glider Operations Northwest of Tucson, Arizona.

AIRPORT MANAGER: (520) 573-8100

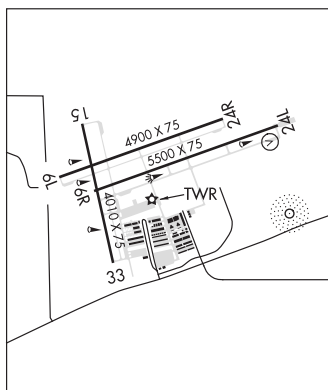
WEATHER DATA SOURCES: AWOS-3 133.35 (520) 578-0269.

COMMUNICATIONS: CTAF 125.8

® **TUCSON APP/DEP CON** 128.5

TOWER 125.8 (1300-0300Z) **GND CON** 118.2

CLEARANCE DELIVERY PHONE: For CD when ATCT is clsd ctc Tucson Apch at 520-829-6121.



CONTINUED ON NEXT PAGE

CONTINUED FROM PRECEDING PAGE

AIRSPACE: CLASS D svc 1300-0300Z; other times CLASS E.

RADIO AIDS TO NAVIGATION: NOTAM FILE TUS.

TUCSON (H) VORTACW 116.0 TUS Chan 107 N32°05.71' W110°54.89' 270° 13.5 NM to fld. 2671/12E.

VOR unusable:

050°-080° byd 30 NM blo 11,500'

350°-020° byd 30 NM blo 13,000'

TACAN AZIMUTH unusable:

050°-080° byd 30 NM blo 11,500'

155°-165° byd 35 NM blo 13,000'

350°-020° byd 30 NM blo 13,000'

DME unusable:

050°-080° byd 30 NM blo 11,500'

155°-165° byd 35 NM blo 13,000'

350°-020° byd 30 NM blo 13,000'

NDB (HW) 338 RYN N32°08.33' W111°09.69' at fld. 2420/12E. NOTAM FILE PRC. NDB unmonitored.

NDB unusable:

025°-050° byd 25 NM blo 14,500'

ILS/DME 111.1 I-IVI Chan 48 Rwy 06R. Class IT.

TUCSON INTL (TUS)(KTUS) P (ANOE) 6 S UTC-7 N32°06.96' W110°56.46' 2643 B TPA—See Remarks (ANG) LRA Class I, ARFF Index C NOTAM FILE TUS

PHOENIX
H-4I, L-5C
IAP, AD

RWY 11L-29R: H10996X150 (ASPH-GRVD) S-160, D-200, 2S-175,

2D-350, 2D/2D2-585 PCN 81 R/B/W/T HIRL

RWY 11L: MALSR. PAPI(P4L)—GA 3.0° TCH 73'. RVR-T 0.7% up.

RWY 29R: REIL. PAPI(P4L)—GA 3.0° TCH 81'. RVR-R Ground. Rgt

tfc. 0.5% down.

RWY 11R-29L: H8408X75 (ASPH) S-120, D-140, 2S-175, 2D-220

PCN 38 F/B/X/T MIRL

RWY 11R: PAPI(P4L)—GA 3.0° TCH 45'. Thld dsplcd 1410'. Rgt tfc.

0.7% up.

RWY 29L: REIL. Pole. 0.6% down.

RWY 03-21: H7000X150 (ASPH-GRVD) S-105, D-137, 2S-174,

2D-230, 2D/2D2-500 PCN 72 F/A/X/T MIRL

RWY 03: Thld dsplcd 850'. Railroad.

RWY 21: REIL. PAPI(P4L)—GA 3.0° TCH 53'. Rgt tfc.

RWY 29L: REIL. Pole. 0.6% down.

RWY 29R: REIL. Pole. 0.6% down.

RWY 03: TORA-7000 TODA-7000 ASDA-7000 LDA-6150

RWY 11L: TORA-10996 TODA-10996 ASDA-10996 LDA-10996

RWY 11R: TORA-6998 TODA-6998 ASDA-6998 LDA-6998

RWY 21: TORA-6000 TODA-7000 ASDA-6000 LDA-6000

RWY 29L: TORA-6998 TODA-6998 ASDA-6998 LDA-6998

RWY 29R: TORA-10996 TODA-10996 ASDA-10996 LDA-10996

ARRESTING GEAR/SYSTEM

RWY 11L BAK-14 BAK-12(B) (1000'). BAK-14 BAK-12(B) (1215') HOOK BAK 12(B) (128' OVRN). **RWY 29R**

SERVICE: S4 FUEL 100LL, JET A OX 1, 2, 3, 4 LGT Rwy 29L/29R REILS opr 24 hrs.

MILITARY—A-GEAR BAK-14/BAK-12B apch end Rwy 11L and BAK-14/BAK-12B apch end Rwy 29R, engagements avbl

only dur ANG duty hr and min PN rqt. BAK-12B ovrn Rwy 29R and BAK-12B ovrn Rwy 11L serviceable but not certified.

BAK-12B in Rwy 11L ovrn has 850' run out. **JASU** 1(C-26) 1(MD-3) 9(M32A-60) **FUEL** A++ , A (avbl 1300-0500Z, OT

2 hr PN \$50 fee, C520-889-0593.) (NC-100LL) **FLUID** PRESAIR LPOX LOX OIL O-133-156(Mil)

AIRPORT REMARKS: Attended continuously. Air carriers use Rwy 11L-29R and Rwy 03-21. Rwy 11R-29L rstd to tkof/land acft

with wing span less than 73' and ldg speed less than 120 kt. Acft dep Rwy 11R required to attain at least 400' AGL

prior to starting turn. Do not mistake Twy A for a landing surface. Twy A is North and parallel to Rwy 11L. Ensure correct

lineup. Rwy 29L is the shorter rwy South of Rwy 29R. No B-747 training except PPR; no flight training 0500-1300Z

except PPR, call airside opr department 520-573-8190. Call ops office at 520-573-8190. Rwy 11L-29R has dstc

remaining markers on NE side. Rwy 03-21 has dstc remaining markers on SE side. Rwy 11L-29R gross weight limit:

DC-10-10 315,000 lbs, DC-10-30/40 400,000 lbs, L-1011-1 325,000 lbs, L-1011-100/200 340,000 lbs. Rwy

03-21 gross weight limit: DC-10-10 300,000 lbs DC-10-30/40 375,000 lbs, L-1011-01 310,000 lbs,

L-1011-100/200 315,000 lbs. All acft use upper antenna until airborne. Helicopter ops located south of Rwy 11R-29L

and west of Twy A13. TPA—3443 (800) small acft, 4043 (1400) large/heavy turbojet acft. B-747 acft taxi with inboard

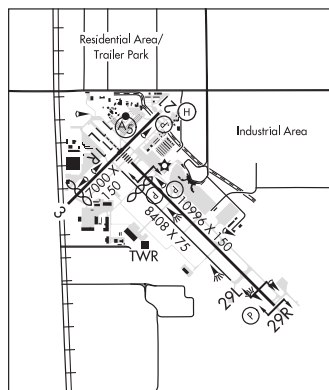
engines only. PPR required for all charter, sports team, cargo and military acft. Ctc airside opr for PPR number at

520-573-8190. Ldg and parking fees may apply for acft 12,500 lbs and up. ANG ramp rstd to acft with wingspan less

than 59'. Portions of Twy D not visible from twr due to hangars. Twy A5 limited to 70,000 lbs or less. No public svcs

avbl at the TUS executive terminal. Flight Notification Service (ADCUS) avbl. NOTE: See Special Notices—Glider

Operations Northwest of Tucson, Arizona.



CONTINUED ON NEXT PAGE