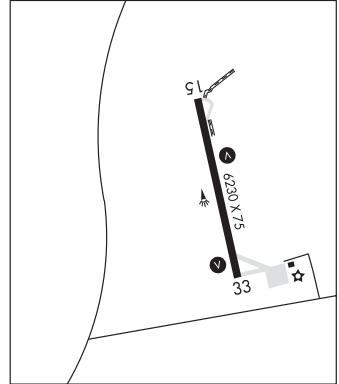


**TOMBSTONE MUNI** (P29) P 3 SE UTC-7 N31°40.28' W110°01.29'  
 4743 NOTAM FILE PRC  
**RWY 06-24:** H4430X60 (ASPH)  
**RWY 06:** Brush.  
**RWY 24:** Brush.  
**AIRPORT REMARKS:** Unattended. Gate combination 3214. Numerous trees and bushes between 1 and 15' in height within primary surface. Rwy 06-24 has 2-4' vegetation along both sides of rwy.  
**AIRPORT MANAGER:** 520-235-5843  
**COMMUNICATIONS:** CTAF 122.9  
**CLEARANCE DELIVERY PHONE:** For CD ctc Albuquerque ARTCC at 505-856-4861.

PHOENIX  
 L-5C

**TUBA CITY** (T03) 5 W UTC-7 N36°05.56' W111°22.99'  
 4513 B NOTAM FILE PRC  
**RWY 15-33:** H6230X75 (ASPH) S-12.5 MIRL  
**RWY 15:** VASI(V2L)—GA 3.0° TCH 40'.  
**RWY 33:** VASI(V2L)—GA 3.0° TCH 40'.  
**SERVICE:** LGT ACTIVATE MIRL Rwy 15-33, VASI Rwy 15 and Rwy 33—CTAF.  
**AIRPORT REMARKS:** Unattended. Livestock on airport. Arpt access by calling security department at 928-283-2501. Gate code: 4513.  
**AIRPORT MANAGER:** (505) 728-2804  
**COMMUNICATIONS:** CTAF 122.9  
**RCO** 122.05R 113.5T (PRESCOTT RADIO)  
**RADIO AIDS TO NAVIGATION:** NOTAM FILE PRC.  
**(H) VORTAC** 113.5 TBC Chan 82 N36°07.28' W111°16.18' 238° 5.8 NM to fld. 5045/15E.

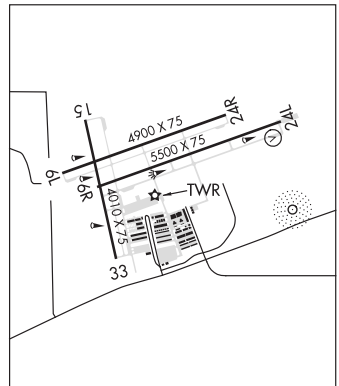
LAS VEGAS  
 H-4J, L-8G



**TUCSON**

**RYAN FLD** (RYN)(KRYN) 10 SW UTC-7 N32°08.53' W111°10.47'  
 2419 B TPA—3219(800) NOTAM FILE PRC  
**RWY 06R-24L:** H5500X75 (ASPH) S-12.5, D-30 MIRL  
**RWY 06R:** REIL. Rgt tfc.  
**RWY 24L:** VASI(V4L)—GA 3.0° TCH 26'.  
**RWY 06L-24R:** H4900X75 (ASPH) S-12.5, D-30 MIRL  
**RWY 06L:** REIL.  
**RWY 24R:** Rgt tfc.  
**RWY 15-33:** H4010X75 (ASPH) MIRL 0.8% up S  
**RWY 15:** Rgt tfc.  
**SERVICE:** S4 FUEL 100LL, JET A LGT When ATCT clsd ACTVT MIRL Rwy 06R-24L and Rwy 15-33—CTAF. REIL Rwy 06R opr dalgt hrs only.  
**AIRPORT REMARKS:** Attended Mon-Fri 1500-0000Z, Sat 1500-0000Z. Fuel is avbl from 1500Z to 0000Z, after hrs, Jet A avbl as an on-call svc, and a \$100 fee applies. Prior arrangements can be made by calling 520-744-7474, self serve 100LL avbl 24 hrs with major credit card. Frequent practice of ILS approaches to Rwy 06R. Rwy 06R and Rwy 06L preferential rwy up to 10 knot tailwind. Afternoon winds usually favor Rwy 24L and Rwy 24R. Use landing lights in pattern. Note: See Special Notices—Glider Operations Northwest of Tucson, Arizona.  
**AIRPORT MANAGER:** (520) 573-8100  
**WEATHER DATA SOURCES:** AWOS-3 133.35 (520) 578-0269.  
**COMMUNICATIONS:** CTAF 125.8  
**(R) TUCSON APP/DEP CON** 128.5  
**TOWER** 125.8 (1300-0300Z) **GND CON** 118.2  
**CLEARANCE DELIVERY PHONE:** For CD when ATCT is clsd ctc Tucson Apmh at 520-829-6121.

PHOENIX  
 H-4J, L-5C  
 IAP, AD



CONTINUED ON NEXT PAGE

## CONTINUED FROM PRECEDING PAGE

**AIRSPACE:** CLASS D svc 1300-0300Z; other times CLASS E.

**RADIO AIDS TO NAVIGATION:** NOTAM FILE TUS.

**TUCSON (H) VORTACW** 116.0 TUS Chan 107 N32°05.71' W110°54.89' 270° 13.5 NM to fld. 2671/12E.

VOR unusable:

050°-080° byd 30 NM blo 11,500'

350°-020° byd 30 NM blo 13,000'

TACAN AZIMUTH unusable:

050°-080° byd 30 NM blo 11,500'

155°-165° byd 35 NM blo 13,000'

350°-020° byd 30 NM blo 13,000'

DME unusable:

050°-080° byd 30 NM blo 11,500'

155°-165° byd 35 NM blo 13,000'

350°-020° byd 30 NM blo 13,000'

**NDB (HW) 338 RYN** N32°08.33' W111°09.69' at fld. 2420/12E. NOTAM FILE PRC. NDB unmonitored.

NDB unusable:

025°-050° byd 25 NM blo 14,500'

**ILS/DME 111.1 I-IVI** Chan 48 Rwy 06R. Class IT.

**TUCSON INTL** (TUS)(KTUS) P (ANG) 6 S UTC-7 N32°06.96' W110°56.46'

2643 B TPA—See Remarks AOE LRA Class I, ARFF Index C NOTAM FILE TUS

**PHOENIX**

**H-41, L-5C**

**IAP, AD**

**RWY 11L-29R:** H10996X150 (ASPH-GRVD) S-160, D-200,

2S-175, 2D-350, 2D/2D2-585 PCN 81 R/B/W/T HIRL

**RWY 11L:** MALS R. PAPI(P4L)—GA 3.0° TCH 73'. RVR-T 0.7% up.

**RWY 29R:** REIL. PAPI(P4L)—GA 3.0° TCH 81'. RVR-R Ground. Rgt tfc. 0.5% down.

**RWY 11R-29L:** H8408X75 (ASPH) S-120, D-140, 2S-175, 2D-220

PCN 38 F/B/X/T MIRL

**RWY 11R:** PAPI(P4L)—GA 3.0° TCH 45'. Thld dsplcd 1410'. Rgt tfc. 0.7% up.

**RWY 29L:** REIL. Pole. 0.6% down.

**RWY 03-21:** H7000X150 (ASPH-GRVD) S-105, D-137, 2S-174,

2D-230, 2D/2D2-500 PCN 72 F/A/X/T MIRL

**RWY 03:** Thld dsplcd 850'. Railroad.

**RWY 21:** REIL. PAPI(P4L)—GA 3.0° TCH 53'. Rgt tfc.

**RUNWAY DECLARED DISTANCE INFORMATION**

**RWY 03:** TORA-7000 TODA-7000 ASDA-7000 LDA-6150

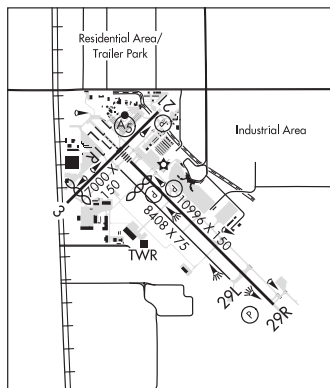
**RWY 11L:** TORA-10996 TODA-10996 ASDA-10996 LDA-10996

**RWY 11R:** TORA-6998 TODA-6998 ASDA-6998 LDA-6998

**RWY 21:** TORA-6000 TODA-7000 ASDA-6000 LDA-6000

**RWY 29L:** TORA-6998 TODA-6998 ASDA-6998 LDA-6998

**RWY 29R:** TORA-10996 TODA-10996 ASDA-10996 LDA-10996



**ARRESTING GEAR/SYSTEM**

**RWY 11L** BAK-14 BAK-12(B) (1000'). **BAK-14** BAK-12(B) (1215') HOOK BAK 12(B) (128' OVRN). **RWY 29R**

**SERVICE:** S4 **FUEL** 100LL, JET A **OX** 1, 2, 3, 4 **LGT** Rwy 29L/29R REILS opr 24 hrs.

**MILITARY—A—GEAR** BAK-14/BAK-12B apch end Rwy 11L and BAK-14/BAK-12B apch end Rwy 29R, engagements avbl only dur ANG duty hr and min PN rqr. BAK-12B ovrn Rwy 29R and BAK-12B ovrn Rwy 11L serviceable but not certified. BAK-12B in Rwy 11L ovrn has 850' run out. **JASU** 1(C-26) 1(MD-3) 9(M32A-60) **FUEL** A++ , A (avbl 1300-0500Z, OT 2 hr PN \$50 fee, C520-889-0593.) (NC-100LL) **FLUID** PRESAIR LPOX LOX **OIL** O-133-156(Mil)

**AIRPORT REMARKS:** Attended continuously. Air carriers use Rwy 11L-29R and Rwy 03-21. Rwy 11R-29L rstd to tkof/land acft with wing span less than 73' and ldg speed less than 120 kt. Acft dep Rwy 11R required to attain at least 400' AGL prior to starting turn. Do not mistake Twy A for a landing surface. Twy A is North and parallel to Rwy 11L. Ensure correct lineup. Rwy 29L is the shorter rwy South of Rwy 29R. No B-747 training except PPR; no flight training 0500-1300Z except PPR, call airside opr department 520-573-8190. Call oprs office at 520-573-8190. Rwy 11L-29R has dstc remaining markers on NE side. Rwy 03-21 has dstc remaining markers on SE side. Rwy 11L-29R gross weight limit: DC-10-10 315,000 lbs, DC-10-30/40 400,000 lbs, L-1011-1 325,000 lbs, L-1011-100/200 340,000 lbs. Rwy 03-21 gross weight limit: DC-10-10 300,000 lbs DC-10-30/40 375,000 lbs, L-1011-01 310,000 lbs, L-1011-100/200 315,000 lbs. All acft use upper antenna until airborne. Helicopter ops located south of Rwy 11R-29L and west of Twy A13. TPA-3443 (800) small acft, 4043 (1400) large/heavy turbojet acft. B-747 acft taxi with inboard engines only. PPR required for all charter, sports team, cargo and military acft. Ctc airside opr for PPR number at 520-573-8190. Rwy 11R-29L not avbl for sked acr opns with more than 9 psgr seats or unsked acr opns with at least 31 psgr seats. Ldg and parking fees may apply for acft 12,500 lbs and up. ANG ramp rstd to acft with wingspan less than 59'. Portions of Twy D not visible from twr due to hangars. Twy A5 limited to 70,000 lbs or less. No public svcs avbl at the TUS executive terminal. Flight Notification Service (ADCUS) avbl. NOTE: See Special Notices—Glider Operations Northwest of Tucson, Arizona.

CONTINUED ON NEXT PAGE

SW, 25 FEB 2021 to 22 APR 2021