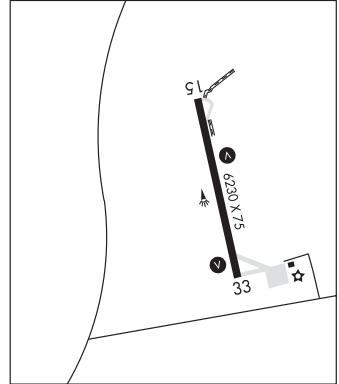


TOMBSTONE MUNI (P29) P 3 SE UTC-7 N31°40.28' W110°01.29'
 4733 NOTAM FILE PRC
RWY 06-24: H4430X60 (ASPH) 1.0% up SW
RWY 06: Brush.
RWY 24: Brush.
AIRPORT REMARKS: Unattended. Gate combination 3214. Numerous trees and bushes between 1 and 15' in height within primary surface. Rwy 06-24 has 2-4 ft vegetation along both sides of rwy.
AIRPORT MANAGER: 520-235-5843
COMMUNICATIONS: CTAF 122.9
CLEARANCE DELIVERY PHONE: For CD ctc Albuquerque ARTCC at 505-856-4861.

PHOENIX
L-5C

TUBA CITY (T03) 5 W UTC-7 N36°05.56' W111°22.99'
 4513 B NOTAM FILE PRC
RWY 15-33: H6230X75 (ASPH) S-12.5 MIRL
RWY 15: VASI(V2L)—GA 3.0° TCH 40'.
RWY 33: VASI(V2L)—GA 3.0° TCH 40'.
SERVICE: LGT ACTIVATE MIRL Rwy 15-33, VASI Rwy 15 and Rwy 33—CTAF.
AIRPORT REMARKS: Unattended. Livestock on airport. Arpt access by calling security department at 928-283-2501. Gate code: 4513.
AIRPORT MANAGER: (505) 728-2804
COMMUNICATIONS: CTAF 122.9
RCO 122.05R 113.5T (PRESCOTT RADIO)
RADIO AIDS TO NAVIGATION: NOTAM FILE PRC.
(H) VORTAC 113.5 TBC Chan 82 N36°07.28' W111°16.18' 238° 5.8 NM to fld. 5045/15E.

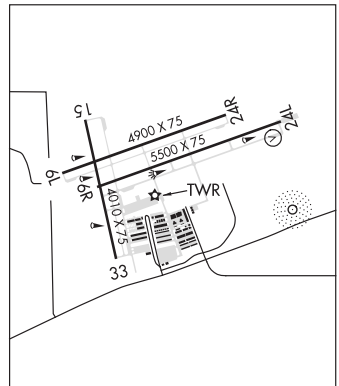
LAS VEGAS
H-4J, L-8G



TUCSON

RYAN FLD (RYN)(KRYN) 10 SW UTC-7 N32°08.53' W111°10.47'
 2419 B TPA—3219(800) NOTAM FILE PRC
RWY 06R-24L: H5500X75 (ASPH) S-12.5, D-30 MIRL
RWY 06R: REIL. Rgt tfc.
RWY 24L: VASI(V4L)—GA 3.0° TCH 26'.
RWY 06L-24R: H4900X75 (ASPH) S-12.5, D-30 MIRL
RWY 06L: REIL.
RWY 24R: Rgt tfc.
RWY 15-33: H4010X75 (ASPH) MIRL 0.8% up S
RWY 15: Rgt tfc.
SERVICE: S4 FUEL 100LL, JET A LGT When ATCT clsd ACTVT MIRL Rwy 06R-24L and Rwy 15-33—CTAF. REIL Rwy 06R opr dalgt hrs only.
AIRPORT REMARKS: Attended Mon-Fri 1500-0000Z, Sat 1500-0000Z. Fuel is avbl from 1500Z to 0000Z, after hrs, Jet A avbl as an on-call svc, and a \$100 fee applies. Prior arrangements can be made by calling 520-744-7474, self serve 100LL avbl 24 hrs with major credit card. Frequent practice of ILS approaches to Rwy 06R. Rwy 06R and Rwy 06L preferential rwy up to 10 knot tailwind. Afternoon winds usually favor Rwy 24L and Rwy 24R. Use landing lights in pattern. Note: See Special Notices—Glider Operations Northwest of Tucson, Arizona.
AIRPORT MANAGER: (520) 573-8100
WEATHER DATA SOURCES: AWOS-3 133.35 (520) 578-0269.
COMMUNICATIONS: CTAF 125.8
(R) TUCSON APP/DEP CON 128.5
TOWER 125.8 (1300-0300Z) **GND CON** 118.2
CLEARANCE DELIVERY PHONE: For CD when ATCT is clsd ctc Tucson Apmh at 520-829-6121.

PHOENIX
H-4J, L-5C
IAP, AD



CONTINUED ON NEXT PAGE

CONTINUED FROM PRECEDING PAGE

AIRSPACE: CLASS D svc 1300-0300Z; other times CLASS E.

RADIO AIDS TO NAVIGATION: NOTAM FILE TUS.

TUCSON (H) VORTACW 116.0 TUS Chan 107 N32°05.71' W110°54.89' 270° 13.5 NM to fld. 2671/12E.

VOR unusable:

050°-080° byd 30 NM blo 11,500'

350°-020° byd 30 NM blo 13,000'

TACAN AZIMUTH unusable:

050°-080° byd 30 NM blo 11,500'

155°-165° byd 35 NM blo 13,000'

350°-020° byd 30 NM blo 13,000'

DME unusable:

050°-080° byd 30 NM blo 11,500'

155°-165° byd 35 NM blo 13,000'

350°-020° byd 30 NM blo 13,000'

NDB (HW) 338 RYN N32°08.33' W111°09.69' at fld. 2420/12E. NOTAM FILE PRC. NDB unmonitored.

NDB unusable:

025°-050° byd 25 NM blo 14,500'

ILS/DME 111.1 I-IVI Chan 48 Rwy 06R. Class IT.

TUCSON INTL (TUS)(KTUS) P (ANG) 6 S UTC-7 N32°06.96' W110°56.46'

2643 B TPA—See Remarks AOE LRA Class I, ARFF Index C NOTAM FILE TUS

PHOENIX

H-4I, L-5C

IAP, AD

RWY 11L-29R: H10996X150 (ASPH-GRVD) S-160, D-200,

2S-175, 2D-350, 2D/2D2-585 PCN 81 R/B/W/T HIRL

RWY 11L: MALS R. PAPI(P4L)—GA 3.0° TCH 73'. RVR-T 0.7% up.

RWY 29R: REIL. PAPI(P4L)—GA 3.0° TCH 81'. RVR-R Ground. Rgt tfc. 0.5% down.

RWY 11R-29L: H8408X75 (ASPH) S-120, D-140, 2S-175, 2D-220

PCN 38 F/B/X/T MIRL

RWY 11R: PAPI(P4L)—GA 3.0° TCH 45'. Thld dspcd 1410'. Rgt tfc. 0.7% up.

RWY 29L: REIL. Pole. 0.6% down.

RWY 03-21: H7000X150 (ASPH-GRVD) S-105, D-137, 2S-174,

2D-230, 2D/2D2-500 PCN 72 F/A/X/T MIRL

RWY 03: Thld dspcd 850'. Railroad.

RWY 21: REIL. PAPI(P4L)—GA 3.0° TCH 53'. Rgt tfc.

RUNWAY DECLARED DISTANCE INFORMATION

RWY 03: TORA-7000 TODA-7000 ASDA-7000 LDA-6150

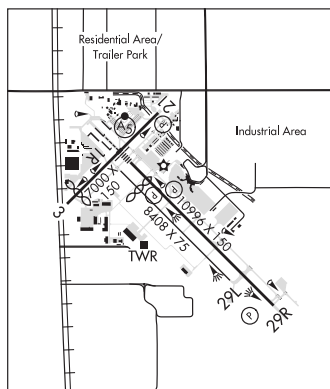
RWY 11L: TORA-10996 TODA-10996 ASDA-10996 LDA-10996

RWY 11R: TORA-6998 TODA-6998 ASDA-6998 LDA-6998

RWY 21: TORA-6000 TODA-7000 ASDA-6000 LDA-6000

RWY 29L: TORA-6998 TODA-6998 ASDA-6998 LDA-6998

RWY 29R: TORA-10996 TODA-10996 ASDA-10996 LDA-10996



ARRESTING GEAR/SYSTEM

RWY 11L BAK-14 BAK-12(B) (1000').

BAK-14 BAK-12(B) (1215') HOOK BAK 12(B) (128' OVRN). **RWY 29R**

SERVICE: S4 FUEL 100LL, JET A OX 1, 2, 3, 4 LGT Rwy 29L/29R REILS opr 24 hrs. Rwy 29R REIL, ensure correct

lineup. Rwy 29L is the shorter rwy south of Rwy 29R. **MILITARY—A-GEAR** BAK-14/BAK-12B apch end Rwy 11L and

BAK-14/BAK-12B apch end Rwy 29R, engagements avbl only dur ANG duty hr and 15 min PN rqr. **JASU 1(C-26)**

1(MD-3) 9(M32A-60) **FUEL** A+, A (avbl 1300-0500Z, OT 2 hr PN \$50 fee, C520-889-0593.) (NC-100LL) **FLUID**

PRESAIR LPOX LOX OIL 0-133-156(Mil)

AIRPORT REMARKS: Attended continuously. Hvy migratory bird act (Phase II) 1 July—31 Aug may pose a potential haz to acct.

Air carriers use Rwy 11L-29R and Rwy 03-21. Acft depg Rwy 11R reqd to attain at least 400 ft AGL prior to starting

turn. Rwy 29 approaches: Do not mistake Twy A for a landing surface. Twy A is North and parallel to Rwy 29R. Rwy 29L

is shorter and narrower and south of Rwy 29R. No flight training 0500-1300Z except PPR, call airside opr department

520-573-8190. Air Natl Guard afld mgmt pers do not determine/rpt a RwyCC nor issue FAA formatted fld cond NOTAM

(FICON). Rwy 11L-29R has dstc remaining markers on NE side. Rwy 03-21 has dstc remaining markers on SE side. All

acct use upper antenna until airborne. TPA—3443 (800) small acct, 4043 (1400) large/heavy turbojet acct. Design group

V acct taxi with onboard engines only. PPR required for all charter, sports team, cargo and military acct. No flt trng

0500-1200Z; excp PPR, call airside operations dept 520-573-8190. Rwy 11R-29L not avbl for sked acr opns with

more than 9 psgr seats. Ldg and parking fees may apply for acct 12,500 lbs and up. No refueling on USCBP inspections

ramp except during medical emergencies. Portions of Twy D not visible from twr due to hangars. Twy A5 limited to 70,000

lbs or less. For general questions call airport communications center 520-573-8182. Review hot spot info on airport

diagram. Flight Notification Service (ADCUS) avbl. NOTE: See Special Notices—Glider Operations Northwest of Tucson,

Arizona.

CONTINUED ON NEXT PAGE