

**SIERRA VISTA MUNI—LIBBY AAF** (FHU)(KFHU) MIL/CIV A 3 N UTC-7 N31°35.31' W110°20.66' PHOENIX

4719 B TPA—See Remarks NOTAM FILE FHU

H-4K, L-5C  
IAP, DIAP, AD

**RWY 08-26:** H12001X150 (CONC) S-75, D-200, 2D-450,

2D/2D2-700 PCN 54 R/B/W/T HIRL 1.0% up W

**RWY 08:** PAPI(P4L)—GA 3.0° TCH 50'.

**RWY 26:** PAPI(P4L)—GA 3.0° TCH 80'. Rgt tfc.

**RWY 12-30:** H5366X100 (ASPH-CONC) S-46, D-106, 2D-137,

2D/2D2-172 PCN 24 F/A/W/T MIRL

**RWY 12:** PAPI(P4L)—GA 3.0° TCH 51'.

**RWY 30:** PAPI(P2R)—GA 3.0° TCH 51'. Rgt tfc.

**RWY 03-21:** H4285X75 (ASPH-CONC) PCN 22 F/A/W/T MIRL

2.0% up SW

**RWY 03:** Thld dsplcd 1253'.

**RWY 21:** Rgt tfc.

**RUNWAY DECLARED DISTANCE INFORMATION**

**RWY 03:** TORA-4285 TODA-4285 ASDA-4285 LDA-3032

**RWY 08:** TORA-12001 TODA-12001 ASDA-12001 LDA-12001

**RWY 12:** TORA-5366 TODA-5366 ASDA-5366 LDA-5366

**RWY 21:** TORA-4285 TODA-4285 ASDA-4285 LDA-4285

**RWY 26:** TORA-12001 TODA-12001 ASDA-12001 LDA-12001

**RWY 30:** TORA-5366 TODA-5366 ASDA-5366 LDA-5366

**SERVICE:** FUEL 100, JET A LGT ACTIVATE PAPI Rwy 08, 26, 12 and

30, HIRL Rwy 08-26, MIRL Rwy 03-21 and 12-30 and perimeter lgt H1-CTAF. FUEL Avbl 1430-2130Z dly, OT

C520-234-3552 (Svc fee). POL svc rqr crew member attend to specify fuel/oil rqr. Fuel ltd to 6000 gal. J8, (NC-100,

A) **TRAN ALERT** Tran acft, etc Libby ATC or Base OPS to coord prk.

**AIRPORT REMARKS:** Attended 1400-0000Z Mon-Sun. Fuel avbl 1430-2130Z 7 days/wk, after hrs call 520-234-3552 (svc

fee). Joint-use civ-mil arpt, extv mil jet ops wkdays. Bird haz invof all rwns on tks and apchs. Deer on and invof all rwns

and twys especially at ngt. When Class D airspace in effect unmanned aerial vehicles opr sfc to 7000' MSL. Bird haz

exists all rwns. Airspace Class D sfc area ltd to dep and full stop lrgs only dur ngt time unmanned acft ops. Exp possible

delays. Manned and unmanned acft not authorized in the same tfc pat. Arriving manned acft may follow unmanned acft

on final. Civ tfc pat not avbl dur daytime unmanned acft tfc pat ops. Dep and full stop lrg authorized. Exp windshear on

apch to all rwns. Civ acft PPR to enter mil ramp. Non scheduled arriving acft rqr assistance, ctc GOC 533-2291/2292.

TPA—fixed wing acft north and rotary wing south TPA fixed wing reciprocating 5700(981), rotary wing 5500(781), fixed

wing turboprop/jet 6200(1481). Twy G and Twy J ltd to single wheel acft max 33,000 lbs, Twy K ltd to single wheel acft

max 50,000 lbs; Twy D and acft apron on NW side ltd to dual wheels acft max 100,000 lbs. Circling not authorized south

of Rwy 08 and Rwy 30. Rwy 8, PAR not coincident with PAPI due to TCH diff of greater than 3'. PAR TCH:41' PAPI

TCH: 50.3'. RWY 26, PAR not coincident with PAPI due to TCH diff of greater than 3'. PAR TCH 49.8' / PAPI TCH:

80.3'. NOTE: See Special Notices—Tethered Areostat Radar System (TARS).

**MILITARY REMARKS:** Opr Sun-Sat 0600-0600Z, exc hol, other times 72 hr PPR DSN 879-2860/2862,

C520-538-2860/2862. See FLIP AP/1 Supplementary Arpt Remarks. **RSTD** 24 hr PPR for all tran mil acft. Civ acft PPR

to enter mil ramp. Twy G ltd to single wheel acft max 33,000 lbs, Twy K ltd to single wheel acft max 50,000 lbs. Circling

not authorized South of Rwy 08 and Rwy 30. **CAUTION** Exp wind shear on apch to all rwy, arpt SW wind may not be

representative of wind on final apch. Extv mil jet ops wkdays. **CSTMS/AG/IMG** Avbl with 72 hr PN for US mil or DoD contract

acft only. **TFC PAT** TPA Fixed wing unmanned acft 5700(981). Do not exceed 5700' until dep end of rwy. **MISC** All tran and

remain overnight acft using mil side must sign in at base ops prior to dep fit line. 72 hr PPR for use of assault strip lctd

5 NM NE. Non-scheduled arr acft rqr assistance ctc EOC 533-2291. All acft using mil tran parking sign in at base ops

prior to leaving fit line. Wx obsn/forecast 0600-0600Z Sun-Fri, exc hol, ASOS other times. Libby wx avbl on 122.95.

DSN 879-3798/2865, C520-538-3798/2865. Remote briefing svc avbl 25 OWS Davis-Monthan AFB DSN

228-6598/6599/6588, C520-228-6598/6599/6588, or HTTPS://25OWS.US.AF.MIL. A Libby Base OPS opr Sun-Sat

0600-0600Z, exc hol other times 72 hr PPR. DSN 879-2860/2862, C520-538-2860/2862.

**AIRPORT MANAGER:** 520-458-5775

**WEATHER DATA SOURCES:** ASOS

**COMMUNICATIONS:** CTAF 124.95 ATIS 134.75 263.025 UNICOM 122.95

Ⓡ **LIBBY AAF GCA APP/DEP CON** 127.05 254.35 (0600Z Sun-0600Z Sat, exc hol) other times by NOTAM, other times ctc

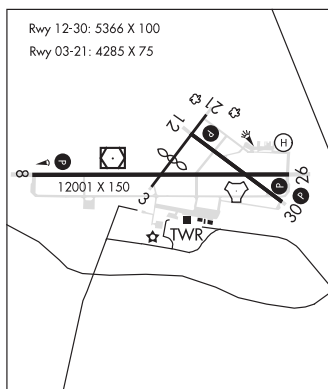
Ⓡ **ALBUQUERQUE CENTER APP/DEP CON** 134.45 327.15

**LIBBY TOWER** 124.95 284.75 (0600Z Sun-0600Z Sat, exc hol) other times by NOTAM.

**GND CON** 121.7 268.7

**LIBBY OPS** 122.95

**AIRSPACE:** CLASS D svc Sun 0600-Sat 0600Z exc hol, other times by NOTAM; other times CLASS G..



CONTINUED ON NEXT PAGE

CONTINUED FROM PRECEDING PAGE

**RADIO AIDS TO NAVIGATION:** NOTAM FILE DUG.

**DOUGLAS (L) VORTACW** 108.8 DUG Chan 25 N31°28.36' W109°36.12' 268° 38.7 NM to fld. 4131/13E.

DME & TACAN AZIMUTH unusable:  
 045°-065° byd 26 NM blo 10,000'  
 065°-095° byd 28 NM blo 9,500'  
 355°-010° byd 35 NM blo 11,300'

**LIBBY (T) VORV/DME** 113.6 FHU Chan 83 N31°35.38' W110°21.30' at fld. 4665/13E. NOTAM FILE FHU.

VOR unmonitored when GCA clsd.  
 military use: No NOTAM MP 1200-1500Z 4th Thurs of month  
 VOR unusable:  
 110°-235° byd 10 NM

DME unusable:  
 110°-235° byd 10 NM

**FORT HUACHUCA (T) TACAN** Chan 53 ARH (111.6) N31°35.13' W110°20.34' at fld. 4660/12E. NOTAM FILE FHU. unmonitored when twr clsd.

TACAN unusable:  
 105°-250° byd 10 NM  
 120°-300° byd 20 NM  
 military use: No NOTAM MP 1200-1500Z 1st Thursday of month

**ILS** 109.9 I-FHU Rwy 26. Class IE. Unmonitored when gca clsd. No NOTAM MP 1200-1500Z 2nd Thursday of Month.

**ASR/PAR** (0600Z Sun-0600Z Sat, except holidays, other times by NOTAM). PAR: No NOTAM MP 1200-1500Z 3rd Thursday of month.

**COMM/NAV/WEATHER REMARKS:** For emerg, freq 121.5 monitored when twr clsd. USAF wx forecast avbl 1200-0300Z from Davis Monthan AFB. Radar see Terminal FLIP for Radar Minima.



**HELIPAD H1:** H40X40 (ASPH) PERIMETER LGTS

**HELIPORT REMARKS:** ACTIVATE perimeter lgts Helipad H1-CTAF.

**SPRINGERVILLE MUNI** (JTC)(KJTC) 1 WSW UTC-7 N34°07.77' W109°18.65'  
 7055 B NOTAM FILE PRC

**PHOENIX**  
 H-4K, L-5D  
 IAP

**RWY 03-21:** H8422X75 (ASPH) S-30 MIRL

**RWY 03:** PAPI(P2L)—GA 4.0° TCH 46'. Fence. 0.4% down.

**RWY 21:** PAPI(P2L)—GA 3.0° TCH 35'. Fence. Rgt tfc. 0.6% up.

**RWY 11-29:** H4603X60 (ASPH) S-19 MIRL

**RWY 11:** PAPI(P2L)—GA 3.0° TCH 35'.

**SERVICE:** FUEL 100LL, JET A+ LGT Rwy 03 PAPI does not provide obstacle clearance 2 NM byd thld. ACTIVATE MIRL Rwy 03-21, MIRL Rwy 11-29, PAPI Rwy 03, Rwy 11 and Rwy 21-CTAF. (NSTD) 5 clicks on, 7 clicks off.

**AIRPORT REMARKS:** Attended 1500-2300Z. For fuel after hrs call 928-245-0151. Mil tfc near arpt. Wildlife on and invof arpt. Density indicators located on rwy ends and at fuel pumps. Indicators on Rwy 3, Rwy 11 and Rwy 29 are out of svc indef.

**AIRPORT MANAGER:** 928-333-5746

**WEATHER DATA SOURCES:** AWOS-3PT 119.65 (928) 333-5716.

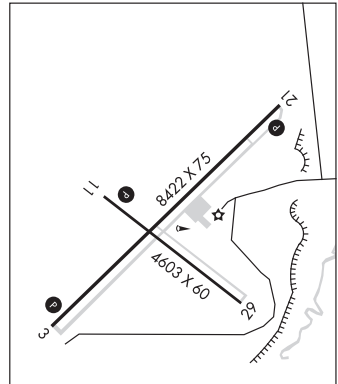
**COMMUNICATIONS:** CTAF/UNICOM 122.8

® **ALBUQUERQUE CENTER APP/DEP CON** 132.9

**CLEARANCE DELIVERY PHONE:** For CD ctc Albuquerque ARTCC at 505-856-4861.

**RADIO AIDS TO NAVIGATION:** NOTAM FILE SJN.

**ST JOHNS (H) VORTAC** 112.3 SJN Chan 70 N34°25.44' W109°08.61' 193° 19.5 NM to fld. 6840/12E.



**STANFIELD** N32°53.15' W111°54.52' NOTAM FILE PRC.  
 (H) **VORTAC** 114.8 TFD Chan 95 048° 8.3 NM to Casa Grande Muni. 1316/12E.  
**RCO** 122.1R 114.8T (PRESCOTT RADIO)

**PHOENIX**  
 H-4J, L-5B, A

**STELLAR AIRPARK** (See CHANDLER on page 36)

**SUN VALLEY** (See BULLHEAD CITY on page 34)