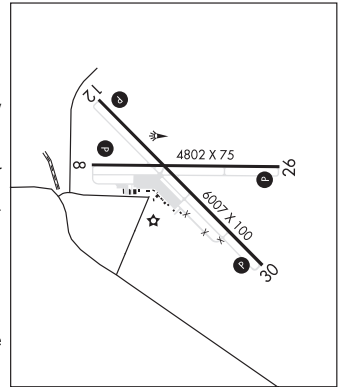


SAFFORD RGNL (SAD)(KSAD) 3 E UTC-7 N32°51.20' W109°38.10'
3178 B NOTAM FILE SAD

PHOENIX
H-4K, L-5C
IAF

RWY 12-30: H6007X100 (ASPH) S-33 MIRL
RWY 12: REIL. PAPI(P2L)—GA 3.0° TCH 40'. Brush.
RWY 30: REIL. PAPI(P2L)—GA 3.0° TCH 40'. Brush.
RWY 08-26: H4802X75 (ASPH) S-23 MIRL 0.4% up E
RWY 08: REIL. PAPI(P2L)—GA 3.0° TCH 43'.
RWY 26: REIL. PAPI(P2L)—GA 3.0° TCH 37'. Brush.



SERVICE: S4 **FUEL** 100LL, JET A+ **OX** 1, 2, 3, 4 **LGT** ACTVT REIL Rwy 08, 12, 26 and 30; PAPI Rwy 08, 12, 26 and 30, MIRL Rwy 08-26 and Rwy 12-30—CTAF.

AIRPORT REMARKS: Attended Mon-Sat 1500-0000Z, Sun on call. Fuel 24 hr credit card svc avbl, 100LL and Jet A. Svc avbl on call 24-7 928-428-7820. Emergency phone 928-428-7820. Military tfc near arpt.

AIRPORT MANAGER: (928) 432-4190
WEATHER DATA SOURCES: ASOS 124.175 (928) 428-0724.
COMMUNICATIONS: CTAF/UNICOM 122.8

ALBUQUERQUE CENTER APP/DEP CON 134.45
CLEARANCE DELIVERY PHONE: For CD if una to ctc on FSS freq, ctc Albuquerque ARTCC at 505-856-4561.

RADIO AIDS TO NAVIGATION: NOTAM FILE PRC.

SAN SIMON (H) VORTACW 115.4 SSO Chan 101 N32°16.15' W109°15.79' 319° 39.7 NM to fld. 3600/13E.

VOR & TACAN AZIMUTH unusable:
020°-050° byd 30 NM blo 8,000'
150°-190° byd 28 NM blo 11,300'
190°-220° byd 30 NM blo 9,000'
235°-250° byd 30 NM blo 9,900'
350°-360° byd 30 NM blo 8,000'

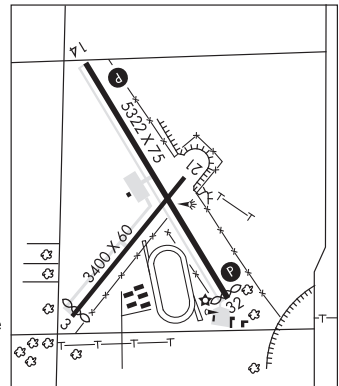
DME unusable:
020°-050° byd 30 NM blo 8,000'
150°-190° byd 28 NM blo 11,300'
190°-220° byd 30 NM blo 9,000'
235°-250° byd 30 NM blo 12,500'
350°-360° byd 30 NM blo 8,000'

HELIPAD H1: H72X72 (CONC) MIRL

ST JOHNS INDUSTRIAL AIR PARK (SJM)(KSJM) 1 N UTC-7 N34°31.11' W109°22.73'
5737 B NOTAM FILE SJM

PHOENIX
H-4K, L-8H
IAF

RWY 14-32: H5322X75 (ASPH) S-90 MIRL
RWY 14: REIL. PAPI(P2L)—GA 3.0° TCH 40'.
RWY 32: REIL. PAPI(P2R)—GA 3.0° TCH 40'. Thld dsplcd 92'. Pole.
RWY 03-21: H3400X60 (ASPH) S-55 MIRL
RWY 03: Thld dsplcd 190'. Tree.



SERVICE: **FUEL** 100LL, JET A+ **LGT** Rwy 14 PAPI OTS indef. Rwy 32 PAPI OTS indef. ACTVT REIL Rwy 14 and Rwy 32, PAPI Rwy 14 and Rwy 32, MIRL Rwy 03-21 and Rwy 14-32—CTAF.

AIRPORT REMARKS: Attended 1400-0000Z. Rwy 03 200' gravel clear area on S end of rwy. Twy parallel to Rwy 14-32 has reflectors entire length of twy on both sides. Rwy 32 calm wind rwy.

AIRPORT MANAGER: 928-337-4254
WEATHER DATA SOURCES: ASOS 134.225 (928) 337-3061.
COMMUNICATIONS: CTAF/UNICOM 122.8

RCO 122.1R 112.3T (PRESCOTT RADIO)
ALBUQUERQUE CENTER APP/DEP CON 124.325
CLEARANCE DELIVERY PHONE: For CD if una to ctc on FSS freq, ctc Albuquerque ARTCC at 505-856-4561.

RADIO AIDS TO NAVIGATION: NOTAM FILE SJN.
(H) VORTAC 112.3 SJN Chan 70 N34°25.44' W109°08.61' 284° 13.0 NM to fld. 6840/12E.

SAN CARLOS APACHE (See GLOBE on page 46)