

SAFFORD RGNL (SAD)(KSAD) 3 E UTC-7 N32°51.20' W109°38.11'

PHOENIX
H-4K, L-5C
IAF

3179 B NOTAM FILE SAD

RWY 12-30: H6006X100 (ASPH) S-33 MIRL

RWY 12: PAPI(P2L)—GA 3.0° TCH 23'. Brush.

RWY 30: PAPI(P2L)—GA 3.0° TCH 20'.

RWY 08-26: H4799X75 (ASPH) S-23 MIRL 0.4% up E

RWY 08: REIL. PAPI(P2L)—GA 3.0° TCH 23'. Fence.

RWY 26: REIL. PAPI(P2L)—GA 3.0° TCH 22'. Brush.

SERVICE: S4 **FUEL** 100LL, JET A+ **OX** 1, 2, 3, 4 **LGT** ACTIVATE REIL Rwy 08 and Rwy 26, PAPI Rwy 08, 12, 26 and Rwy 30, MIRL Rwy 08-26 and Rwy 12-30—CTAF.

AIRPORT REMARKS: Attended Mon-Sat 1500-0030Z, Sun on call. Fuel 24 hr credit card svc avbl, 100LL only. Svc avbl on call 24 hrs 928-428-7820. Emergency phone 928-428-7820.

AIRPORT MANAGER: (928) 432-4261

WEATHER DATA SOURCES: ASOS 124.175 (928) 428-0724.

COMMUNICATIONS: CTAF/UNICOM 122.8

ALBUQUERQUE CENTER APP/DEP CON 134.45

CLEARANCE DELIVERY PHONE: For CD if una to ctc on FSS freq, ctc Albuquerque ARTCC at 505-856-4561.

RADIO AIDS TO NAVIGATION: NOTAM FILE PRC.

SAN SIMON (H) VORTACW 115.4 SSO Chan 101 N32°16.15' W109°15.79' 319° 39.7 NM to fld. 3600/13E. **HIWAS.**

VOR & TACAN AZIMUTH unusable:

020°-050° byd 30 NM blo 8,000'

150°-190° byd 28 NM blo 11,300'

190°-220° byd 30 NM blo 9,000'

235°-250° byd 30 NM blo 9,900'

350°-360° byd 30 NM blo 8,000'

DME unusable:

020°-050° byd 30 NM blo 8,000'

150°-190° byd 28 NM blo 11,300'

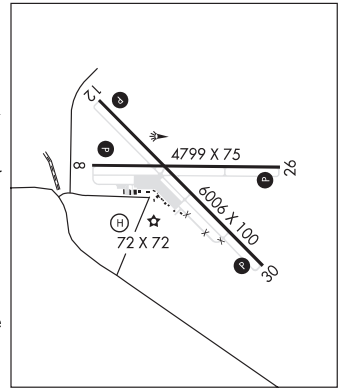
190°-220° byd 30 NM blo 9,000'

235°-250° byd 30 NM blo 12,500'

350°-360° byd 30 NM blo 8,000'



HELIPAD H1: H72X72 (CONC) MIRL



ST JOHNS INDUSTRIAL AIR PARK (SJM)(KSJM) 1 N UTC-7 N34°31.11' W109°22.73'

PHOENIX
H-4K, L-8H
IAF

5737 B NOTAM FILE SJM

RWY 14-32: H5322X75 (ASPH) S-90 MIRL

RWY 14: REIL. PAPI(P2L)—GA 3.0° TCH 40'. Pole.

RWY 32: REIL. PAPI(P2R)—GA 3.0° TCH 40'. Thld dsplcd 92'. Pole.

RWY 03-21: H3400X60 (ASPH) S-55 MIRL

RWY 03: Thld dsplcd 190'. Tree.

SERVICE: **FUEL** 100LL, JET A **LGT** Rwy 14 PAPI OTS indef. Rwy 32 PAPI OTS indef. **ACTIVATE** MIRL Rwy 03-21 and Rwy 14-32, PAPI Rwy 14 and Rwy 32, REIL Rwy 14 and Rwy 32—CTAF.

AIRPORT REMARKS: Attended 1400-0000Z. Rwy 03 200' gravel clear area on S end of rwy. Twy parallel to Rwy 14-32 has reflectors entire length of twy on both sides. Rwy 32 calm wind rwy.

AIRPORT MANAGER: 928-337-4254

WEATHER DATA SOURCES: ASOS 134.225 (928) 337-3061.

COMMUNICATIONS: CTAF/UNICOM 122.8

RCO 122.1R 112.3T (PRESCOTT RADIO)

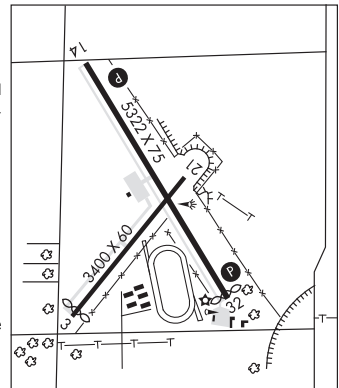
ALBUQUERQUE CENTER APP/DEP CON 124.325

CLEARANCE DELIVERY PHONE: For CD if una to ctc on FSS freq, ctc Albuquerque ARTCC at 505-856-4561.

RADIO AIDS TO NAVIGATION: NOTAM FILE SJM.

(H) VORTAC 112.3 SJM Chan 70 N34°25.44'

W109°08.61' 284° 13.0 NM to fld. 6840/12E.



SAN CARLOS APACHE (See GLOBE on page 46)