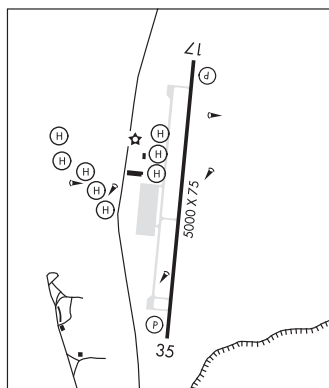


GRAND CANYON WEST (1G4) 60 NW UTC-7 N35°59.17' W113°49.02'LAS VEGAS
H-4I, L-8F, A

4817 B Class III, ARFF Index A NOTAM FILE PRC

RWY 17-35: H5000X75 (ASPH-GRVD) S-30 MIRL 1.1% up S**RWY 17:** REIL. PAPI(P4L)—GA 3.0° TCH 39'. Rgt tfc.**RWY 35:** REIL. PAPI(P4L)—GA 3.0° TCH 38'.**RUNWAY DECLARED DISTANCE INFORMATION****RWY 17:** TORA-5000 TODA-5000 ASDA-5000 LDA-5000**RWY 35:** TORA-5000 TODA-5000 ASDA-5000 LDA-5000**SERVICE:** LGT ACTIVATE REIL Rwy 17 and Rwy 35, and MIRL Rwy 17-35—CTAF.**AIRPORT REMARKS:** Attended daltg hrs. Use extreme care due to large volume of high-speed fixed wing and rotary wing tfc in and around vicinity of the arpt. Due to high commercial fixed wing and helicopter tfc volume no practice touch and go ops. Calm winds recommend using Rwy 35 for departures and Rwy 17 for ldgs. Transient acct must park at south end of apron.**AIRPORT MANAGER:** 928-769-2627**WEATHER DATA SOURCES:** AWOS-3PT 119.425 (928) 351-1802.**COMMUNICATIONS:** CTAF 122.9**CLEARANCE DELIVERY PHONE:** For CD ctc Los Angeles ARTCC at 661-575-2079.**RADIO AIDS TO NAVIGATION:** NOTAM FILE PRC.**PEACH SPRINGS (H) VOR/DME** 112.0 PGS Chan 57 N35°37.48' W113°32.67' 314° 25.4 NM to fld. 4760/15E.VOR unusable:
205°-255° byd 30 NM blo 10,500'DME unusable:
205°-255° byd 30 NM blo 10,500'**PEACH SPRINGS** N35°37.48' W113°32.67' NOTAM FILE PRC.PHOENIX
H-4I, L-8F**(H) VOR/DME** 112.0 PGS Chan 57 314° 25.4 NM to Grand Canyon West. 4760/15E.VOR unusable:
205°-255° byd 30 NM blo 10,500'DME unusable:
205°-255° byd 30 NM blo 10,500'**RCO** 122.25 (PRESCOTT RADIO)**PEARCE FERRY** (See MEADVIEW on page 57)**PEORIA****PLEASANT VALLEY** (P48) 0 N UTC-7 N33°48.04' W112°15.04'

PHOENIX

1580 NOTAM FILE PRC

RWY 05C-23C: 4200X100 (DIRT)**RWY 05C:** Thld dsplcd 490'. Road. Rgt tfc.**RWY 23C:** Thld dsplcd 200'. Road.**RWY 05L-23R:** 4200X100 (GRVL)**RWY 05L:** Thld dsplcd 480'. Road.**RWY 23R:** Thld dsplcd 63'. Road. Rgt tfc.**RWY 05R-23L:** 4200X100 (DIRT)**RWY 05R:** Thld dsplcd 580'. Road. Rgt tfc.**RWY 23L:** Thld dsplcd 240'. Road.**RWY 14-32:** 2400X100 (GRVL)**RWY 14:** Thld dsplcd 200'. Rgt tfc.**RWY 32:** Thld dsplcd 300'. Road.**SERVICE:** FUEL 100LL**AIRPORT REMARKS:** Attended 1600-0000Z. All rwys soft when wet. Aerobatic activity on and invof arpt. Aerobatic box approx 3000' northwest of Rwy 05-23 sfc to 6600' MSL. Be alert Rwy 14-32 when aerobatic box occupied. Extensive glider and ultralight activity on and invof arpt. Rwy 14-32 preferred landings and takeoffs north of all intersections of Rwy 05-23. Powered acct preferred Rwy 23R-05L. Rwy 23C, Rwy 23R and Rwy 23L +24' P-line marked with balls across thlds. Bldg and parked acct located 120' South of Rwy 05R-23L approximately midpoint. Rwy separations do not meet minimum standards, simultaneous ops not authorized on any two rwys. Shallow underground gas pipelines located 240' from end of runway 23L, 23C, and 23R. Dsplcd thlds on all rwys marked with white chalk and small white tires. Ctc FBO on 122.90.**AIRPORT MANAGER:** (623) 566-5960**COMMUNICATIONS:** CTAF 122.9**CLEARANCE DELIVERY PHONE:** For CD ctc Phoenix Apch at 602-306-2565.