

LOGAN—CACHÉ (LGU)(KLGU) 3 NW UTC-7(-6DT) N41°47.51' W111°51.10'

4457 B Class IV, ARFF Index A NOTAM FILE LGU

RWY 17-35: H9020X100 (ASPH) S-24, D-179 PCN 55 F/D/X/T HIRL

RWY 17: MALSR. PAPI(P2L)—GA 3.0° TCH 45'. Railroad.

RWY 35: REIL. PAPI(P2L)—GA 3.0° TCH 39'.

RWY 10-28: H4075X60 (ASPH) S-12

RWY 28: Railroad.

RUNWAY DECLARED DISTANCE INFORMATION

RWY 10: TORA-4075 TODA-4075

RWY 17: TORA-9020 TODA-9020 ASDA-9020 LDA-9020

RWY 28: TORA-4075 TODA-4075

RWY 35: TORA-9020 TODA-9020 ASDA-9020 LDA-9020

SERVICE: S4 **FUEL** 100LL, JET A **OX** 1, 2 **LGT** ACTVT MALSR Rwy 17; REIL Rwy 35; PAPI Rwy 17 and Rwy 35; HIRL Rwy 17-35—CTAF.

AIRPORT REMARKS: Attended 1500-0200Z±. Birds on and invof arpt spring and summer. Rwy 10-28 dalgt use only. 100LL fuel avbl H24 with credit card; aft hr—435-753-2221/435-752-5955. Flt trng invof arpt. Cold temperature airport. Altitude correction required at or below -15C.

AIRPORT MANAGER: (435) 752-8111

WEATHER DATA SOURCES: ASOS 135.275 (435) 752-6941.

COMMUNICATIONS: CTAF/UNICOM 122.8

FRANCIS PEAK RCO 122.2 (CEDAR CITY RADIO)

Ⓡ **SALT LAKE CENTER APP/DEP CON** 127.7

CLEARANCE DELIVERY PHONE: For CD ctc Salt Lake ARTCC at 801-320-2568.

RADIO AIDS TO NAVIGATION: NOTAM FILE CDC.

BRIGHAM CITY (L) (L) VORV/DME 112.9 LHO Chan 76 N41°47.57' W112°00.59' 076° 7.1 NM to fld. 5354/14E.

VOR unusable:

010°-045° byd 20 NM blo 15,000'

045°-070° byd 20 NM blo 16,000'

070°-110° byd 20 NM blo 15,000'

110°-155° byd 15 NM blo 12,000'

155°-215° byd 15 NM blo 15,000'

155°-215° byd 20 NM

305°-320° byd 20 NM blo 15,000'

DME unusable:

010°-045° byd 20 NM blo 15,000'

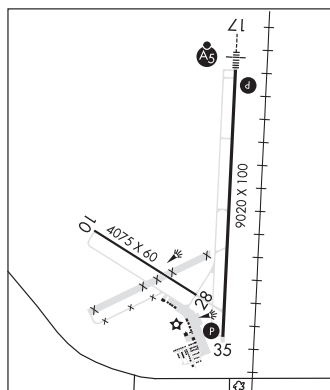
045°-070° byd 20 NM blo 16,000'

070°-125° byd 20 NM blo 15,000'

155°-245° byd 15 NM

245°-320° byd 20 NM blo 15,000'

ILS/DME 109.15 I-LGU Chan 28(Y) Rwy 17. Class IE. LOC unusable byd 12° left of course. ILS is unmonitored.



SALT LAKE CITY

H-3D, L-11D

IAP, AD

LUCIN N41°21.78' W113°50.44' NOTAM FILE CDC.

(VH) (H) VORTAC 113.6 LCU Chan 83 176° 39.6 NM to Wendover. 4400/17E.

SALT LAKE CITY

H-3D, L-11C

VOR unusable:

057°-073° byd 40 NM blo 13,000'

057°-073° byd 80 NM blo 18,000'

074°-103° byd 40 NM

155°-165° byd 40 NM

180°-240° byd 35 NM blo 12,000'

185°-207° byd 40 NM

208°-218° byd 40 NM blo 23,000'

219°-229° byd 40 NM

230°-240° byd 40 NM blo 18,000'

TACAN AZIMUTH unusable:

180°-240° byd 35 NM blo 12,000'

DME unusable:

180°-240° byd 35 NM blo 12,000'

RCO 122.1R 113.6T (CEDAR CITY RADIO)