

FLAGSTAFF PULLIAM (FLG)(KFLG) 4 S UTC-7 N35°08.42' W111°40.15'
7015 B TPA—See Remarks Class I, ARFF Index B NOTAM FILE FLG
RWY 03-21: H8800X150 (ASPH-GRVD) S-30, D-95, 2S-120, 2D-140
PCN 37 F/D/W/T HIRL

PHOENIX
H-4J, L-8G
IAP, AD

RWY 03: PAPI(P4L)—GA 3.0° TCH 52'.
RWY 21: MALSR. PAPI(P4L)—GA 3.0° TCH 51'. Thld dsplcd 1800'.

RUNWAY DECLARED DISTANCE INFORMATION

RWY 03: TORA-8800 TODA-8800 ASDA-8800 LDA-8800
RWY 21: TORA-8800 TODA-8800 ASDA-8800 LDA-7000

SERVICE: S4 FUEL 100LL, JETA QX2 LGT When ATCT clsd ACTIVATE
MALSR Rwy 21; HIRL Rwy 03-21—CTAF. PAPI Rwy 03-21 on
consly.

NOISE: Noise abatement proc in eft; avoid flight over village 3 miles south.

AIRPORT REMARKS: Attended continuously. Fuel avbl H24. Rwy 21 calm
wind rwy. Exp windshear and turbulence when sfc winds exceed 10 Kt.
ILS unmonitored when twr clsd. Snow removal equip may be on rwy;
mnt 134.55 when ATCT clsd. Arpt may be CLOSED during snow
removal ops. TPA-8004(989) conventional acct, 7504(489)
helicopter, 8504(1489) high performance.

AIRPORT MANAGER: 928-213-2933

WEATHER DATA SOURCES: ASOS 125.8 (928) 779-2439.

COMMUNICATIONS: CTAF 134.55 ATIS 125.8 UNICOM 122.95

RCO 123.65R 113.85T (PRESCOTT RADIO)

COTTONWOOD RCO 122.3 (PRESCOTT RADIO)

® **PHOENIX APP/DEP CON** 126.375

TOWER 134.55 1300-0400Z 1 Apr-30 Sep, 1400-0200Z 1 Oct-31 Mar **GND CON** 121.9

CLEARANCE DELIVERY PHONE: For CD when ATCT clsd, ctc Phoenix Apch at 602-306-2565.

AIRSPACE: CLASS D svc 1300-0400Z 1 Apr-30 Sep, 1400-0200Z 1 Oct-31 Mar; other times CLASS G.

RADIO AIDS TO NAVIGATION: NOTAM FILE FLG.

(H) (H) VOR/DME 113.85 FLG Chan 85(Y) N35°08.83' W111°40.45' at fld. 7026/14E.

VOR/DME unusable:

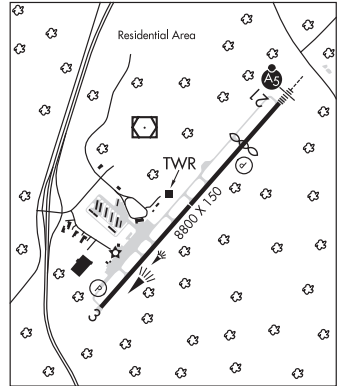
335°-030° byd 19 NM blo 24,000'

DME unusable:

230°-255° byd 20 NM blo 15,000'

ILS 110.5 I-FLG Rwy 21. Glideslope unusable byd 5° right of LOC course. LOC unusable inside of fig 0.8 DME.

Unmonitored when ATCT clsd.



FLYING J RANCH (See PIMA on page 72)

FORT HUACHUCA N31°35.13' W110°20.34' NOTAM FILE FHU.

PHOENIX
H-4K, L-5C

(T) TACAN 111.6 ARH Chan 53 at Sierra Vista Muni-Libby AAF. 4660/12E. unmonitored when twr clsd.

TACAN unusable:

105°-250° byd 10 NM

120°-300° byd 20 NM

military use: No NOTAM MP 1200-1500Z 1st Thursday of month

GILA BEND AF AUX (GXF)(KGF) AF 3 S UTC-7 N32°53.27' W112°43.18'

PHOENIX
H-4J, L-5B

AIRSPACE: CLASS D svc 1430-0630Z Mon-Fri, 1500-2359Z wkend, clsd hol; other times CLASS G.