

CASA GRANDE MUNI (CGZ)(KCGZ) 5 N UTC-7 N32°57.29' W111°46.01'
 1464 B TPA—2502(1038) NOTAM FILE CGZ MON Airport
RWY 05-23: H5200X100 (ASPH) S-18.5, D-65, 2S-82 MIRL
 0.3% up NE

RWY 05: MALSR. PAPI(P2L)—GA 3.0° TCH 43'. Road.
RWY 23: PAPI(P2L)—GA 3.0° TCH 40'. Road. Rgt tfc.

SERVICE: S4 FUEL 100LL, JET A+ LGT Actvt MALSR Rwy 05—CTAF.
AIRPORT REMARKS: Attended 1300-2300Z. Tsnt prac apch invof arpt.

100LL H24 with credit card. A+ aft hr; call out fee 520-251-3366.
 Rwy 23 GPS apch opr necessity only. Twy hold lines cnctg to the rwy
 280' fm cntrln. CAUTION: Taxi on Twy B; be alert to acft hldg on cnctg
 twys.

AIRPORT MANAGER: (520) 421-8625

WEATHER DATA SOURCES: AWOS-3PT 132.175 (520) 836-3392.

COMMUNICATIONS: CTAF/UNICOM 122.7

Ⓡ **ALBUQUERQUE CENTER APP/DEP CON** 125.4

CLEARANCE DELIVERY PHONE: For CD ctc Albuquerque ARTCC at
 505-856-4861.

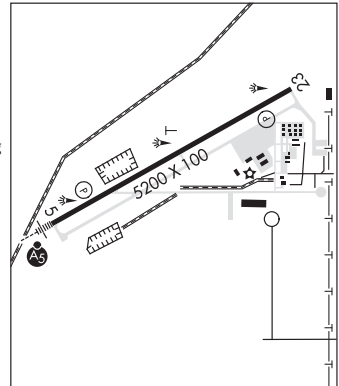
RADIO AIDS TO NAVIGATION: NOTAM FILE PRC.

STANFIELD (VH) (H) VORTAC 114.8 TFD Chan 95 N32°53.15'
 W111°54.52' 048° 8.3 NM to fld. 1316/12E.

VOR unusable:

- 034°-039° byd 40 NM
- 075°-088° byd 40 NM blo 9,000'
- 075°-088° byd 47 NM
- 110°-122° byd 40 NM
- 127°-134° byd 40 NM
- 160°-278° byd 40 NM
- 279°-289° byd 40 NM blo 18,000'
- 290°-315° byd 40 NM

ILS 111.15 I-CGZ Rwy 05. Class IA. LOC only unmonitored 0000-1500Z Mon-Fri and 1900-1700Z Sat.
 Glideslope unusable for couple apchs blo 1,650' MSL.



PHOENIX
 H-4J, L-5B, A
 IAP

CHANDLER

CHANDLER MUNI (CHD)(KCHD) 3 SE UTC-7 N33°16.15' W111°48.67'
 1243 B TPA—See Remarks NOTAM FILE CHD
RWY 04R-22L: H4870X75 (ASPH) S-30 MIRL

RWY 04R: REIL. PAPI(P4L)—GA 3.0° TCH 39'. Rgt tfc.

RWY 22L: REIL. PAPI(P4L)—GA 3.0° TCH 45'.

RWY 04L-22R: H4401X75 (ASPH) S-30 MIRL

RWY 04L: PAPI(P4L)—GA 3.5° TCH 48'.

RWY 22R: PAPI(P4L)—GA 3.0° TCH 40'. Rgt tfc.

SERVICE: S4 FUEL 100LL, JET A+ 0X1, 2, 3, 4 LGT When ATCT clsd
 ACTVT PAPI Rwy 04L, 04R, 22L & 22R; MIRL Rwy 04R-22L and Rwy
 04L-22R—CTAF. REIL Rwy 04R and 22L on consly.

AIRPORT REMARKS: Attended Mon-Fri 1200-0000Z, Sat-Sun
 1200-2230Z. Birds and wildlife on and invof arpt. Avoid overflight
 of high school 2 NM SW. 135 ft lgtd pwr poles & lines N-S 1.5 mi W.
 135 ft unlgtd pwr poles & lines E-W 1 mi S. Twy A btn Twy D & F not
 vis fm ATCT. Tsnt heli prkg & pax pup N side by Twy N. Hops on Twy C;
 Charlie Pat for hel trng. General aviation tsnt fixed wing prkg boxes in
 front of trml. Parl rws; staggered apch ends. Rwy end 22R: 85 ft ant
 1/4 mi N of thr. Rwy 04L calm wind rwy. Rwy 04R calm wind rwy.
 TPA—2300(1057)—Fixed wing-2300 ft MSL. Rotorwing-1900 ft
 MSL. NOTE: See Special Notices—Arrival Alert.

AIRPORT MANAGER: 480-782-3540

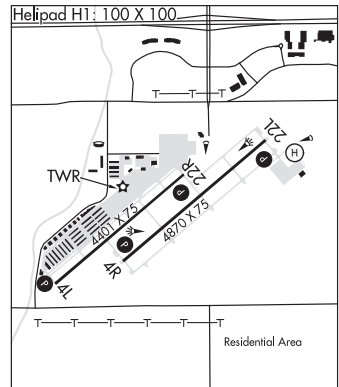
WEATHER DATA SOURCES: AWOS-3PT (480) 814-9952

COMMUNICATIONS: CTAF 126.1 ATIS 128.325 UNICOM 122.95

Ⓡ **PHOENIX APP/DEP CON** 123.7

TOWER 133.1 Arr S&E, Dep Rwy 04R-22L, 126.1 Arr N&W, Dep Rwy 04L-22R. (1300-0400Z)
GND CON 124.4

CLEARANCE DELIVERY PHONE: When ATCT clsd, for CD ctc Phoenix Apch - 602-306-2565.



PHOENIX
 L-5B, A
 IAP, AD

CONTINUED ON NEXT PAGE

CONTINUED FROM PRECEDING PAGE

AIRSPACE: CLASS D svc 1300-0400Z; other times CLASS G.

RADIO AIDS TO NAVIGATION: NOTAM FILE IWA.

WILLIE (L) VORTACW 113.3 IWA Chan 80 N33°18.19' W111°39.09' 243° 8.3 NM to fld. 1367/13E.

VOR unusable:

300°-320° byd 25 NM blo 7,500'

320°-300° byd 20 NM blo 7,500'

TACAN AZIMUTH unusable:

020°-055° byd 30 NM blo 12,000'

150°-195° byd 20 NM blo 7,500'

DME unusable:

020°-055° byd 30 NM blo 12,000'

150°-195° byd 20 NM blo 7,500'

HELIPAD H1: H100X100 (CONC)

STELLAR AIRPARK (P19) 3 W UTC-7 N33°17.93' W111°54.95'

1179 B TPA-2002(823) NOTAM FILE PRC

RWY 17-35: H4417X80 (ASPH) MIRL

RWY 17: REIL. PAPI(P2L)-GA 3.25° TCH 39'. Thld dsplcd 366'. Road.

RWY 35: REIL. PAPI(P2R)-GA 3.25° TCH 40'. Thld dsplcd 349'. Tree.

RUNWAY DECLARED DISTANCE INFORMATION

RWY 17: LDA-4051

RWY 35: LDA-4068

SERVICE: S2 FUEL 100LL LGT Dusk-dawn: ACTIVATE REIL Rwy 17 and Rwy 35; MIRL Rwy 17-35-CTAF.

NOISE: Avoid overflight traffic of noise sensitive area west of Rwy 17-35 and north of arpt.

AIRPORT REMARKS: Unattended. Fuel: 100LL: fuel info - (602)-793-6383.

Alert: non radio acct and birds on and invof arpt. Tsnt certificated for 15,000 gross tkof weight PPR. Trng TGL and trng hel not authorized. Helo training prohibited. Coml and student trng ops by permit only.

Rwy 17 calm wind rwy. Eng runup use east side area. Flood irrigation btw rwy and twy; water up to 1 ft irregular sked. Ldg fee charged for all commercial ops.

AIRPORT MANAGER: 480-359-6575

COMMUNICATIONS: CTAF/UNICOM 122.975

PHOENIX APP/DEP CON 123.7

CLEARANCE DELIVERY PHONE: For CD ctc Phoenix Apch at 602-306-2565.

PHOENIX

L-5B, A

IAP



CONTINUED ON NEXT PAGE