

**SONOMA SKYPARK** (ØQ9) 3 SE UTC-8(-7DT) N38°15.45' W122°26.05'

SON FRANCISCO

20 NOTAM FILE OAK

**RWY 08-26:** H2480X40 (ASPH) S-8

**RWY 08:** Thld dsplcd 140'. Trees. Rgt tfc.

**RWY 26:** Thld dsplcd 237'. Trees.

**SERVICE:** S4 FUEL 100LL

**AIRPORT REMARKS:** Attended 1700-0100Z†. Ngt ops prohibited. Noise sensitive area E end of Rwy 08-26. For noise abatement information call arpt manager 707-996-2100. Rotorwing turbojet, ultralights plus acft over 8,500 pounds gross weight are prohibited. Perform pre-dep runup W end. Rwy 26 is calm wind rwy. Rwy 08 for arrival and dep only, no touch and go ldg or practice apchs.

**AIRPORT MANAGER:** 707-996-2100

**COMMUNICATIONS:** CTAF/UNICOM 122.8

**CLEARANCE DELIVERY PHONE:** For CD etc Oakland ARTCC at 510-745-3380.

**SONOMA VALLEY** (See SCHELLVILLE/SONOMA on page 225)

## SOUTH LAKE TAHOE

**LAKE TAHOE** (TVL)(KTVL) 3 SW UTC-8(-7DT) N38°53.63' W119°59.72'

SON FRANCISCO

6268 B TPA—See Remarks NOTAM FILE TVL

H-3B, L-9A

**RWY 18-36:** H8541X100 (ASPH-GRVD) S-70, D-125, 2S-159,

IAP, AD

2D-210 MIRL

**RWY 18:** MALSF. PAPI(P4L)—GA 3.0° TCH 48'. Thld dsplcd 800'.

Brush.

**RWY 36:** REIL. Thld dsplcd 2033'. Trees. Rgt tfc.

**RUNWAY DECLARED DISTANCE INFORMATION**

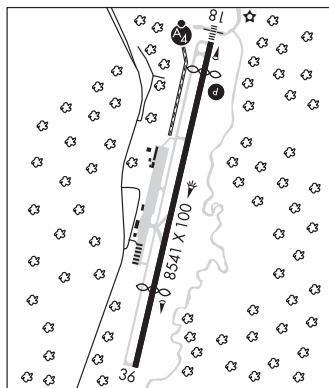
**RWY 18:** TORA-8541 TODA-8541 ASDA-7817 LDA-7017

**RWY 36:** TORA-8541 TODA-8541 ASDA-7741 LDA-5708

**SERVICE:** S2 FUEL 100LL, JET A OX 1, 3 LGT ACTIVATE MALSF Rwy

18; PAPI Rwy 18, MIRL Rwy 18-36—CTAF.

**AIRPORT REMARKS:** Attended Sep-May 1500-0000Z†, Jun-Aug 1500-0000Z†. Arpt conditions not monitored 0000-1500Z†. Birds and waterfowl invof arpt. After winter storms Rwy 18-36 opens before all taxiways are clear. Arpt surrounded on east, south and west by rapidly rising terrain. Tfc advisories and sequencing in the tfc pattern are based on position reports received from pilots in these areas. Adverse weather effects magnified by mountains. Avoid desolation wilderness west of arpt. Preferred arrival Rwy 18. Preferred departure Rwy 36. For large and high performance acft dep Rwy 18, right downwind dep is recommended. Access noise restrictions: max 80 DBA departure, 84 DBA arrival (Transport—85 DBA), maximum 77.1 DBA night limit. Noise abatement, depart Rwy 36, rwy heading 1 mile, left 320° at white arrow to shoreline. For noise abatement info call 530-542-6182. Recreational airborne activity along southern lakeshore. Paragliders and motorized prchts opr from rwy sfc. TPA 7500(1232) small acft, 8000(1732) transport/high performance aircraft. Twy H west of Twy A restricted to acft less than 12,500 pounds. Twy H clsd perm.



**AIRPORT MANAGER:** 530-542-6182

**WEATHER DATA SOURCES:** ASOS 124.725 (530) 541-5739. Unrelbl wind spd and dir info. LAWRS.

**COMMUNICATIONS:** CTAF/UNICOM 122.85

**SQUAW VALLEY RCO** 122.25 122.5 (RENO RADIO)

**OAKLAND CENTER APP/DEP CON** 127.95

**CLNC DEL** 134.3

**AIRSPACE:** CLASS E.

**RADIO AIDS TO NAVIGATION:** NOTAM FILE TVL.

**SQUAW VALLEY (L) VORW/DME** 113.2 SWR Chan 79 N39°10.82' W120°16.18' 127° 21.4 NM to fld. 8850/16E.

**HIWAS.**

**LDA/DME** 108.9 I-TVL Chan 26 Rwy 18. LDA/DME Rwy 18 unmonitored. LOC front unusable byd 15° left and 15° right of course. LOC front unusable within 4.0 DME.

**SOUTHARD FLD** (See BIEBER on page 94)

**SOUTHERN CALIFORNIA LOGISTICS** (See VICTORVILLE on page 245)

**SPAULDING** (See SUSANVILLE on page 230)