

CHESTER

ROGERS FLD (O05) 2 SW UTC-8(-7DT) N40°16.94' W121°14.47'

4534 B NOTAM FILE RIU

RWY 16-34: H5020X100 (ASPH) S-60, D-110 MIRL 0.4% up N

RWY 16: PAPI(P2L)—GA 3.0° TCH 45'. Trees.

RWY 34: PAPI(P2L)—GA 3.0° TCH 32'. Trees. Rgt tfc.

SERVICE: FUEL 100LL, JET A LGT ACTIVATE MIRL Rwy 16-34 and PAPI Rwy 16 and Rwy 34—CTAF.

AIRPORT REMARKS: Attended 1600Z†-dusk.

AIRPORT MANAGER: 530-283-6069

WEATHER DATA SOURCES: AWOS-3 118.275 (530) 258-2860.

COMMUNICATIONS: CTAF/UNICOM 122.8

Ⓡ OAKLAND CENTER APP/DEP CON 132.2

CLEARANCE DELIVERY PHONE: For CD ctc Oakland ARTCC at 510-745-3380.

RADIO AIDS TO NAVIGATION: NOTAM FILE RBL.

RED BLUFF (VH) (H) VORTACW 115.7 RBL Chan 104 N40°05.93' W122°14.18' 058° 47.1 NM to fld. 321/18E.

VOR unusable:

015°-087° byd 40 NM

174°-178° byd 40 NM

188°-267° byd 40 NM

268°-278° byd 40 NM blo 8,000'

268°-278° byd 63 NM

279°-287° byd 40 NM

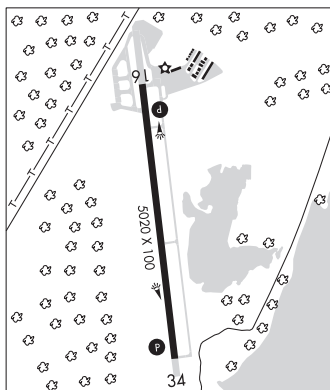
280°-300° blo 3,500'

298°-304° byd 40 NM

KLAMATH FALLS

H-3B, L-2H, 11A

IAP



CHICO RGNL (CIC)(KCIC) 4 N UTC-8(-7DT) N39°47.72' W121°51.51'

240 B TPA—See Remarks Class III, ARFF Index A NOTAM FILE CIC

RWY 13L-31R: H6724X150 (ASPH-GRVD) S-63, D-100, 2S-127,

2D-170 PCN 20 F/B/X/T HIRL 0.5% up NW

RWY 13L: MALSR. PAPI(P4L)—GA 3.0° TCH 52'. Rgt tfc.

RWY 31R: REIL. VASI(V4L)—GA 3.0° TCH 54'.

RWY 13R-31L: H3000X60 (ASPH) S-12.5 PCN 9 F/C/Y/T 0.4% up NW

RWY 13R: Rgt tfc.

RUNWAY DECLARED DISTANCE INFORMATION

RWY 13L:TORA-6724 TODA-6724 ASDA-6724 LDA-6724

RWY 13R:TORA-3000 TODA-3000 ASDA-3000 LDA-3000

RWY 31L:TORA-3000 TODA-3000 ASDA-3000 LDA-3000

RWY 31R:TORA-6724 TODA-6724 ASDA-6724 LDA-6724

SERVICE: S4 FUEL 100LL, JET A OX3 LGT When twr clsd ACTVT MALSR Rwy 13L; REIL Rwy 31R; PAPI Rwy 13L; VASI Rwy 31R; HIRL Rwy 13L-31R—CTAF.

AIRPORT REMARKS: Attended 1500-0300Z†. Fuel avbl 1530-0300Z†. For fuel after hrs call 530-588-4888. Birds on and invof arpt. PPR for scheduled air carrier svc involving acft with more than 9 passenger seats and unscheduled air carrier svc involving acft with more than 30 passenger seats. Without PPR, ARFF svcs may not be avbl. For PPR ctc arpt mgr 530-896-7216. For jet/heavy acft opr E of fld TPA-1740(1500), for light acft opr W and E of fld TPA-1240(1000). Rwy 13R-31L is part of an asph pad 3000'X1500'.

AIRPORT MANAGER: 530-896-7216

WEATHER DATA SOURCES: AWOS-3 119.675 (530) 879-3850. LAWRS.

COMMUNICATIONS: CTAF 121.0 ATIS 119.675 UNICOM 122.95

Ⓡ OAKLAND CENTER APP/DEP CON 132.2

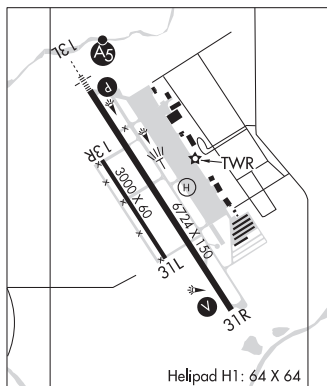
TOWER 121.0 (1500-0300Z†) GND CON 121.9

AIRSPACE: CLASS D svc 1500-0300Z†; other times CLASS G.

SAN FRANCISCO

H-3B, L-26/H

IAP, AD



CONTINUED ON NEXT PAGE

CONTINUED FROM PRECEDING PAGE

RADIO AIDS TO NAVIGATION: NOTAM FILE RBL.

RED BLUFF (VH) (H) VORTACW 115.7 RBL Chan 104 N40°05.93' W122°14.18' 118° 25.2 NM to fld. 321/18E.

VOR unusable:

- 015°-087° byd 40 NM
- 174°-178° byd 40 NM
- 188°-267° byd 40 NM
- 268°-278° byd 40 NM blo 8,000'
- 268°-278° byd 63 NM
- 279°-287° byd 40 NM
- 280°-300° blo 3,500'
- 298°-304° byd 40 NM

ILS/DME 111.3 I-CIC Chan 50 Rwy 13L. Class IE. Unmonitored when ATCT closed.

COMM/NAV/WEATHER REMARKS: Emerg frequency 121.5 not avbl at twr.

HELIPAD H1: H64X64 (CONC) S-35

CHINA LAKE NAWs (ARMITAGE FLD) (NID)(KNID) NAS 3 NW UTC-8(-7DT) N35°41.12' LOS ANGELES

W117°41.71'

H-4I, L-7C

2288 B NOTAM FILE NID Not insp.

RWY 08-26: H11199X200 (CONC) PCN 59 R/B/W/T HIRL

RWY 08: PAPI(P4L)—GA 3.0° TCH 45'.

RWY 26: PAPI(P4L)—GA 3.0° TCH 46'.

RWY 03-21: H10001X200 (CONC) PCN 111R/B/W/T HIRL

RWY 21: OLS. PAPI(P4L)—GA 3.0° TCH 57'. 0.8° up.

RWY 14-32: H9014X200 (ASPH) PCN 16 R/B/W/T HIRL

RWY 14: OLS. PAPI(P4R)—GA 3.0° TCH 52'.

RWY 32: OLS. PAPI(P4R)—GA 3.0° TCH 50'.

ARRESTING GEAR/SYSTEM

RWY 08 HOOK E28(B) (1765 FT).

HOOK E28(B) (1545 FT). RWY 26

RWY 03 HOOK E28(B) (1657 FT).

HOOK E28(B) (2793 FT). RWY 21

SERVICE: LGT Rwy 03-21, Rwy 08-26 and Rwy 14-32 mrkd and lgtd 200 ft wide. MILITARY— JASU 3(GTC-85)

5(NC-10A1) 1(NC-10B) 1(NC-10C) 7(AM32A-108) 4(A/M47A-4) 4(MSU-200). FUEL F24 - Avbl 1400-0700Z‡

Mon-Thu; 1400-0400Z‡ altn Thu-Fri; 2200-0500Z‡ Sun. Clsd Sun preceding Mon hol and altn Fri. FLUID SP PRESAIR

LHOX LOX - Avbl 1400-2300Z‡ Mon-Fri, clsd altn Fri-Sat-Sun-hol. OXRB. OIL O-133-156 TRAN ALERT Exp svc delay.

Ltd tran svc avbl 1530-0030Z‡ Mon-Fri.

NOISE: Dep avoid overflight China Lake and city of Ridgecrest 2 NM SSE.

MILITARY REMARKS: Opr Mon-Fri 1530-0630Z‡, Sun 2300-0100Z‡. Clsd altn Fri. Open 1530-2030Z‡, clsd 2030-2300Z‡,

open 2330-0100Z‡ 1st working/non-hol Fri of the month. Sat-Sun opr by PPR/lcl use only. See FLIP AP/1

Supplementary Arpt Info. Flt Haz R2508 and China Lake NAWs Supplementary Arpt Remarks. RSTD PPR DSN

437-5301. All PPR issued 1530-0630Z‡ weekdays only. PPR civil acct off bus. Rstd afld hrs subj chg. Pilots filing KNID

China Lake as an altn or emerg div are advd to call base ops DSN 437-5475 to vfy operg hrs. CAUTION Bird hazard near

golf course, within Class D Airspace Oct-Apr. Twy B and Twy G not lgtd. Twy C clsd. TFC PAT Reduced rwy separation

standards in effect USN/USMC acct. Twy B and Twy G are not lighted. CSTMS/AG/IMG Customs not avbl. Acft entering from

foreign countries must clear Customs prior arrival. MISC Tran acct to/fr China Lake NID must ctc R2508 Complex Control

Board for schedule/brief prior to obtaining a PPR. Portions of apch end Rwy 26 and adj twy not visible fr twr.

COMMUNICATIONS: ATIS 322.375

® JOSHUA APP/DEP CON 133.65 348.7

TOWER 120.15 340.2 (1530-0630Z‡ Mon-Fri; clsd altn Fri. 2300-0000Z‡ Sun. Opn 1530-2030Z‡, clsd 2030Z‡, opn

2300-0000Z‡ 1st working/non-hol Fri of the month. Sat-Sun opr by PPR/lcl use only) (Rstd afld hrs subject to change)

GND CON 350.3 CLNC DEL 254.25

PMSV METRO 343.15 (Mon-Fri 1300-0700Z‡, clsd alternate Fri.)

VFR ADVISORY SVC 133.65 126.55 127.5 291.6 348.7 (Provided to all pilots opr within adjacent R2508. Ctc Joshua APP

CON.)

AIRSPACE: CLASS D svc 1530-0630Z‡ Mon-Fri, 2300-0100Z‡ Sun, clsd altn Fri, opn 1530-2030Z‡, clsd 2030-2300Z‡,

opn 2300-0100Z‡ 1st working/non-hol Fri of the month, Sat-Sun opr by PPR/lcl use only; other times CLASS G.

CONTINUED ON NEXT PAGE