

CONCORD

BUCHANAN FLD (CCR)(KCCR) 1 W UTC-8(-7DT) N37°59.38' W122°03.41'

SAN FRANCISCO
H-3B, L-2F, 3A, A
IAP, AD

26 B ARFF Index—See Remarks NOTAM FILE CCR

RWY 01L-19R: H5001X150 (ASPH-CONC-GRVD) S-60, D-90,

2S-114, 2D-140 PCN 124F/C/W/T HIRL

RWY 01L: REIL. PAPI(P4L)—GA 4.0° TCH 40'. Tree.

RWY 19R: MALS. PAPI(P4L)—GA 3.0° TCH 22'. Thld dsplcd 601'. Pole. Rgt tfc.

RWY 14L-32R: H4602X150 (ASPH-CONC-GRVD) S-60, D-90,

2S-114, 2D-140 PCN 108F/C/W/T MIRL

RWY 14L: Thld dsplcd 301'. Road.

RWY 32R: REIL. PAPI(P4R)—GA 4.0° TCH 40'. Thld dsplcd 350'. Tree. Rgt tfc.

RWY 14R-32L: H2798X75 (ASPH) S-12.5 PCN 14 F/B/W/T

RWY 14R: Road. Rgt tfc.

RWY 01R-19L: H2770X75 (ASPH) S-17 PCN 12 F/B/W/U

RWY 01R: Tree. Rgt tfc.

RWY 19L: Tree.

RUNWAY DECLARED DISTANCE INFORMATION

RWY 01L:TORA-4701 TODA-5001 ASDA-4401 LDA-4401

RWY 01R:TORA-2770 TODA-2770 ASDA-2770 LDA-2770

RWY 14L:TORA-4601 TODA-4601 ASDA-4001 LDA-3701

RWY 14R:TORA-2799 TODA-2799 ASDA-2799 LDA-2799

RWY 19L:TORA-2770 TODA-2770 ASDA-2770 LDA-2770

RWY 19R:TORA-5001 TODA-5001 ASDA-5001 LDA-4401

RWY 32L:TORA-2799 TODA-2799 ASDA-2799 LDA-2799

RWY 32R:TORA-4601 TODA-5081 ASDA-4481 LDA-4131

SERVICE: S4 FUEL 100LL, JET A1+ OX1, 2 LGT ACTIVATE MALS Rwy 19R 0600-1400Z±; PAPI Rwy 01L, Rwy 19R, and Rwy 32R-119.7. Rwy 01L PAPI does not provide obstruction clearance byd 4.0 NM from thld. Rwy 32R PAPI does not provide obstruction clearance byd 4.0 NM from thld. REIL Rwy 01L off when tower clsd.

NOISE: Noise sensitive area practice noise abatement (fly quiet) procedures. Arpt has noise abatement procedures ctc arpt manager prior to arrival 925-681-4200.

AIRPORT REMARKS: Attended 1500-0100Z±. Birds on and invof arpt, heaviest concentration Nov-Mar and after rainstorms. Arpt sfc conditions not monitored 0600-1500Z±. When twr clsd Rwy 14L-32R, Rwy 14R-32L and Rwy 01R-19L CLOSED. Rwy 19R standard left tfc when twr closed. Rwy 14R-32L and 01R-19L not avbl for sked acf opns with more than 9 psgr seats or unsked acf opns with at least 31 psgr seats. Class IV, ARFF Index A. CLOSED to acf opns with more than 30 psgr seats exc PPR; call amgr 925-681-4200. ARFF svc avbl 24 hrs with prior apvl from arpt admin. +8' fence 110' byd Rwy 01L TODA distance of 5010' and +7' fence 210' byd Rwy 14L TODA distance of 4601' along the extended rwy centerline. Rwy 01R-19L pavement has high severity block cracking, longitudinal and transverse cracking, patching and weathering. No training ops Mon-Fri 0600-1500Z±, Sat, Sun and holidays 0600-1600Z±. Ldg fee for commercial ops and tie down fee for overnight parking.

AIRPORT MANAGER: (925) 681-4200

WEATHER DATA SOURCES: ASOS (925) 689-2077 LAWRs.

COMMUNICATIONS: CTAF 119.7 ATIS 124.7 925-685-4567 UNICOM 122.9

Ⓡ TRAVIS APP/DEP CON 119.9

CONCORD TOWER 119.7 123.9 (1500-0600Z±) GND CON 121.9 CLNC DEL 118.75

AIRSPACE: CLASS D svc 1500-0600Z±; other times CLASS G.

RADIO AIDS TO NAVIGATION: NOTAM FILE CCR.

CONCORD (T) VOR/DME 117.0 CCR Chan 117 N38°02.70' W122°02.71' 173° 3.4 NM to fld. 5/17E.

VOR unusable:

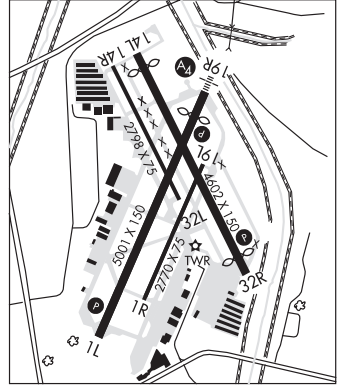
090°-115° byd 10 NM blo 3,500'

DME unusable:

090°-115° byd 10 NM blo 3,500'

LDA/DME 108.5 I-CCR Chan 2R Rwy 19R. LDA unmonitored when ATCT clsd.

COMM/NAV/WEATHER REMARKS: When twr clsd call Travis apch ctl (SUU) clnc del 707-424-5111.



CORNING MUNI (Ø04) 1 NE UTC-8(-7DT) N39°56.77' W122°10.27'

SAN FRANCISCO

296 B NOTAM FILE RIU

RWY 17-35: H2699X60 (ASPH) S-12 MIRL

RWY 35: Rgt tfc.

SERVICE: S4 LGT ACTIVATE MIRL Rwy 17-35—CTAF.

AIRPORT REMARKS: Attended 1600-0100Z±. Medical/firefighting/agricultural helicopters in vicinity of arpt. Ultralight activity on and in vicinity of arpt. Arpt rstd to acft less than 12,500 lbs maximum tkf weight or less.

AIRPORT MANAGER: 530-824-7025

COMMUNICATIONS: CTAF/UNICOM 123.0

CLEARANCE DELIVERY PHONE: For CD ctc Oakland ARTCC at 510-745-3380.