

WINDOW ROCK (RQE)(KRQE) 1 S UTC-7 N35°39.12' W109°04.04'

6742 B NOTAM FILE RQE

RWY 03-21: H7000X75 (ASPH) S-30, D-45, 2D-75 MIRL**RWY 03:** REIL. PAPI(P2L)—GA 3.0° TCH 42'. Fence.**RWY 21:** REIL. Rgt tfc.**SERVICE:** LGT ACTVT REIL Rwy 03 and 21; MIRL Rwy 03-21—CTAF.**AIRPORT REMARKS:** Attended Mon-Fri 1500-0000Z. Gate access code 2476. Twy turn-a-round at Rwy 03 thr unusable due to large cracks, ruts, holes and loose aggregate. Hills and cliffs all quadrants. Turbulence may be experienced in/ovt arpt.**AIRPORT MANAGER:** 928-871-6466**WEATHER DATA SOURCES:** ASOS 118.325 (928) 810-7235.**COMMUNICATIONS:** CTAF/UNICOM 122.8Ⓡ **ALBUQUERQUE CENTER APP/DEP CON** 124.325**CLEARANCE DELIVERY PHONE:** For CD etc Albuquerque ARTCC at 505-856-4861.**RADIO AIDS TO NAVIGATION:** NOTAM FILE GUP.**GALLUP (VH) (H) VORTAC** 115.1 GUP Chan 98 N35°28.56' W108°52.36' 304° 14.2 NM to fld. 7053/14E.

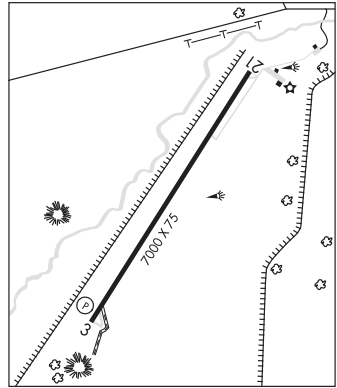
VOR unusable:

298°-306° byd 40 NM

DENVER

H-4K, L-8H

IAP

**WINSLOW-LINDBERGH RGNL** (INW)(KINW) 1 W UTC-7 N35°01.31' W110°43.35'

4941 B NOTAM FILE INW MON Airport

RWY 04-22: H7499X150 (ASPH) S-50, D-80, 2S-102, 2D-125

MIRL 0.8% up SW

RWY 22: REIL. VASI(V4L)—GA 3.0° TCH 40'. Thld dsplcd 1262'. Tree.**RWY 11-29:** H7100X150 (ASPH) S-60, D-70, 2S-89, 2D-110 MIRL 0.4% up NW**RWY 11:** REIL. VASI(V4L)—GA 3.0° TCH 36'. Rgt tfc.**RWY 29:** VASI(V4L)—GA 3.0° TCH 28'. Thld dsplcd 344'. Fence.**RUNWAY DECLARED DISTANCE INFORMATION**

RWY 04:	LDA-7499
RWY 11:	LDA-7100
RWY 22:	LDA-6236
RWY 29:	LDA-6756

SERVICE: FUEL 100LL, JET A LGT ACTIVATE REIL Rwy 11 and Rwy 22; MIRL Rwy 04-22 and Rwy 11-29—CTAF. VASI Rwy 11 and Rwy 29 opr consly.**AIRPORT REMARKS:** Attended Mon-Fri 1400-0100Z, Sat-Sun 1500-0000Z. After hr svc - 928-587-2630. Rwy 11-29 edges both sides rough with cracks & vegetation; center ptn has lrg cracks & 4 in holes. Rwy 11 markings faded. Rwy 29 markings faded. SW corner of Forest Svc ramp clsd. Landing fee for commercial aircraft. Overnight tiedown fee.**AIRPORT MANAGER:** 928-289-2422**WEATHER DATA SOURCES:** ASOS 118.875 (928) 289-0134.**COMMUNICATIONS:** CTAF/UNICOM 122.8

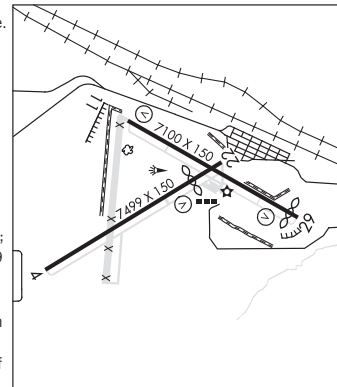
RCO 122.6 (PRESCOTT RADIO)

Ⓡ **ALBUQUERQUE CENTER APP/DEP CON** 127.675**CLEARANCE DELIVERY PHONE:** For CD if una to ctc on FSS freq, ctc Albuquerque ARTCC at 505-856-4561.

PHOENIX

H-4K, L-8G

IAP



CONTINUED ON NEXT PAGE

CONTINUED FROM PRECEDING PAGE

AIRSPACE: CLASS E svc 1100-0600Z; other times CLASS G.

RADIO AIDS TO NAVIGATION: NOTAM FILE INW.

(VH) (H) VORTACW 112.6 INW Chan 73 N35°03.70' W110°47.70' 110° 4.3 NM to fld. 4913/14E.

VOR unusable:

015°-021° byd 40 NM
022°-032° byd 40 NM blo 31,000'
033°-043° byd 40 NM blo 13,000'
033°-043° byd 96 NM
044°-050° byd 40 NM
073°-077° byd 40 NM
120°-160° byd 40 NM
161°-171° byd 40 NM blo 16,000'
161°-171° byd 48 NM
172°-185° byd 40 NM blo 12,000'
172°-185° byd 63 NM
186°-191° byd 40 NM
192°-202° byd 40 NM blo 10,000'
192°-202° byd 62 NM
203°-215° byd 40 NM blo 14,000'
203°-215° byd 77 NM
216°-281° byd 40 NM
282°-292° byd 40 NM blo 18,000'
302°-307° byd 40 NM
