

**TUSCALOOSA RGNL** (TCL)(KTCL) 3 NW UTC-6(-5DT) N33°13.24' W87°36.68'

170 B LRA ARFF Index—See Remarks NOTAM FILE TCL

**RWY 04-22:** H6499X150 (ASPH-GRVD) S-61, D-87, 2D-168

PCN 22 F/C/X/T HIRL

**RWY 04:** MALSR.**RWY 22:** PAPI(P4L)—GA 3.0° TCH 50'. Tree.**RWY 12-30:** H4001X100 (ASPH) S-15 PCN 4 F/B/X/T MIRL**RWY 12:** Tree.**RWY 30:** PAPI(P4R)—GA 3.0° TCH 58'. Trees.**SERVICE:** S4 FUEL 100LL, JET A OX 2 LGT When ATCT CLSD ACTVT MALSR RWY 04; PAPI RWY 22; HIRL RWY 04-22 MED INTST only; TWY LGTS—CTAF.**AIRPORT REMARKS:** Attended 1100-0400Z†. Rwy 12-30 NA when twr clsd; lgtd as a visual rwy. Birds and deer on and in/ovf arpt. Class IV, ARFF Index A. 24 hr PPR for unsked ACR ops grt than 30 pax seats 0330-1100Z† ctc arpt mgr. Index B ARFF capability avbl H24. Twy D clsd btn Twy D5 and Twy D6 when twr clsd. Rwy 04-22 cracks in sfc.**AIRPORT MANAGER:** 205-454-9939**WEATHER DATA SOURCES:** ASOS 132.825 (205) 750-8940.**COMMUNICATIONS:** CTAF 126.3 UNICOM 122.95

TUSCALOOSA RCO 122.2 (ANNISTON RADIO)

Ⓡ BIRMINGHAM APP/DEP CON 120.15

TOWER 126.3 (1300-0200Z†) GND CON 121.8 CLNC DEL 120.775

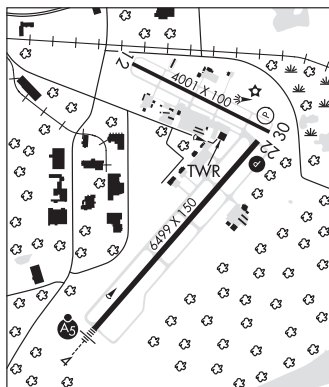
**CLEARANCE DELIVERY PHONE:** For CD if una to ctc on FSS freq, ctc Birmingham Apch at 205-769-3907.**AIRSPACE:** CLASS D svc 1300-0200Z†; other times CLASS G.**RADIO AIDS TO NAVIGATION:** NOTAM FILE ANB.**CRIMSON (L) VORTACW** 117.8 LDK Chan 125 N33°15.53' W87°32.21' 236° 4.4 NM to fld. 370/3E.

TACAN AZIMUTH unusable:

100°-170°

**TUSKE NDB (LOMW)** 362 TC N33°09.51' W87°40.22' 039° 4.8 NM to fld. 140/OE. NOTAM FILE TCL.

ILS 109.1 I-TCL Rwy 04. Class IB. LOM TUSKE NDB. Unmonitored when ATCT clsd. LOM unmonitored.

ATLANTA  
H-6K, 9A, L-18H  
IAP, AD**TUSKEGEE****MOTON FLD MUNI** (Ø6A) 3 N UTC-6(-5DT) N32°27.63' W85°40.80'

264 B NOTAM FILE ANB

**RWY 13-31:** H5005X100 (ASPH) S-28.5 MIRL**RWY 13:** PAPI(P2L)—GA 3.0° TCH 30'. Brush.**RWY 31:** PAPI(P2L)—GA 3.0° TCH 30'. Trees.**SERVICE:** S4 FUEL 100LL, JET A+ OX 1, 2 LGT ACTVT PAPI Rwy 13 and Rwy 31; MIRL Rwy 13-31—CTAF. Parl twy lgtd full length.**AIRPORT REMARKS:** Attended 1300-2300Z†. Aft hr—334-421-4266. Aft hr fuel—334-421-4266. Parachute Jumping. Wildlife on and in/ovf arpt. Rwy 13-31 mkg faded and cvrd in algae.**AIRPORT MANAGER:** 334-724-0208**COMMUNICATIONS:** CTAF/UNICOM 122.8

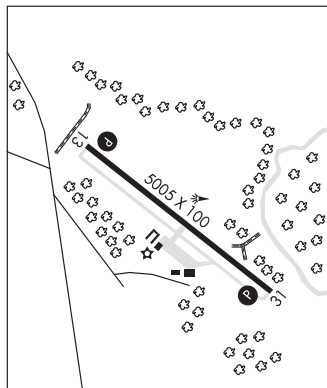
Ⓡ ATLANTA APP/DEP CON 125.5 126.55 (1115-0400Z†)

CLNC DEL 134.25

ATLANTA CENTER APP/DEP CON 120.45 (0400-1115Z†)

**CLEARANCE DELIVERY PHONE:** For CD ctc Atlanta Apch at 678-364-6132, when Apch clsd ctc Atlanta ARTCC at 770-210-7692.**RADIO AIDS TO NAVIGATION:** NOTAM FILE ANB.**TUSKEGEE (L) VORW/DME** 117.3 TGE Chan 120 N32°29.09'

W85°40.16' 198° 1.6 NM to fld. 488/2E.

ATLANTA  
H-9A, 12F, L-18I  
IAP**TUSKE** N33°09.51' W87°40.22' NOTAM FILE TCL.**NDB (LOMW)** 362 TC 039° 4.8 NM to Tuscaloosa Rgnl. 140/OE.