

HUNTSVILLE INTL—CARL T JONES FLD (HSV)(KHSV) 9 SW UTC-6(-5DT) N34°38.23'

W86°46.50'

629 B LRA ARFF Index—See Remarks NOTAM FILE HSV MON Airport

RWY 18R-36L: H12600X150 (ASPH-CONC-GRVD) S-120, D-250,

2D-550 PCN 120F/A/X/T HIRL CL

RWY 18R: ALSF2. TDZL. RVR-TMR Rgt tfc.

RWY 36L: MALSR. TDZL. RVR-TMR

RWY 18L-36R: H10001X150 (ASPH-GRVD) S-120, D-250, 2S-175,

2D-550 PCN 105F/B/W/T HIRL

RWY 18L: MALSR. PAPI(P4R)—GA 3.0° TCH 73'. RVR-TR

RWY 36R: MALSR. PAPI(P4R)—GA 3.0° TCH 72'. RVR-TR Thld dsplcd 200'. Rgt tfc.

RUNWAY DECLARED DISTANCE INFORMATION

RWY 18L:TORA-10001 TODA-10001 ASDA-9801 LDA-9801

RWY 18R:TORA-12600 TODA-12600 ASDA-12600 LDA-12600

RWY 36L:TORA-12600 TODA-12600 ASDA-12600 LDA-12600

RWY 36R:TORA-10001 TODA-10001 ASDA-10001 LDA-9801

SERVICE: S4 FUEL 100LL, JET A OX 1, 2, 3, 4 LGT Actvt MALSR

Rwy 18L, 36L, and 36R; HIRL Rwy 18L-36R and Rwy

18R-36L—CTAF. Rwy 18R ALSF on step 2 When ATCT clsd.

AIRPORT REMARKS: Attended continuously. Line up and wait not authorized.

Int of Twy J and svc road are unctd. Flt notification svc (ADCUS) avbl.

Class I, ARFF Index C. Ctc HSV ARFF on CTAF or phone 256-461-1115 for emerg When ATCT clsd.

AIRPORT MANAGER: 256-258-1958

WEATHER DATA SOURCES: ASOS 121.25 (256) 772-8074. WSP.

COMMUNICATIONS: CTAF 127.6 ATIS 121.25 UNICOM 122.95

RCO 122.2 (ANNISTON RADIO)

Ⓡ APP/DEP CON 118.05 (185°-004°) 125.6 (005°-184°) (1200-0600Z‡)

MEMPHIS CENTER APP/DEP CON 120.8 (0600-1200Z‡)

TOWER 127.6 (1200-0600Z‡) GND CON 121.9 CLNC DEL 120.35

CLEARANCE DELIVERY PHONE: For CD when twr clsd, if una to ctc on FSS freq, ctc Memphis ARTCC at 901-368-8453/8449.

AIRSPACE: CLASS C svc ctc APP CON svc 1200-0600Z‡; other times CLASS E.

VOR TEST FACILITY (VOT) 111.0

RADIO AIDS TO NAVIGATION: NOTAM FILE DCU.

DECATUR (L) DME 112.8 DCU Chan 75 N34°38.90' W86°56.37' 095° 8.2 NM to fld. 590. DME unmonitored.

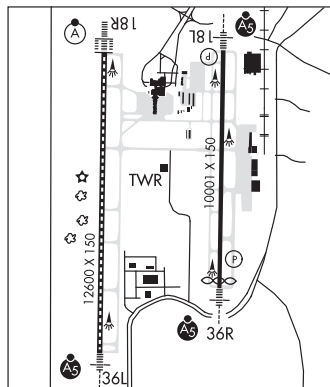
ILS 111.9 I-TVN Rwy 18L. Class IE.

ILS 109.3 I-HSV Rwy 18R. Class IIIE.

ILS/DME 108.5 I-ELL Chan 22 Rwy 36L. Class IE.

ILS/DME 109.55 I-JJC Chan 32(Y) Rwy 36R. Class IE. LOC unusable byd 20° left of course.

ASR



MOONTOWN (3M5) 7 E UTC-6(-5DT) N34°44.84' W86°27.66'

655 B NOTAM FILE ANB

RWY 09-27: 2180X160 (TURF) LIRL 1.0% up W

RWY 09: Trees.

RWY 27: Tree. Rgt tfc.

SERVICE: S2 FUEL 100LL LGT ACTVT LIRL Rwy 09-27—CTAF. ACTVT rotg bcn—CTAF. Twy lgts for twy turnoff only.

AIRPORT REMARKS: Unattended.

AIRPORT MANAGER: 256-852-9781

COMMUNICATIONS: CTAF/UNICOM 122.7

Ⓡ HUNTSVILLE APP/DEP CON 125.6 (1200-0600Z‡) other times ctc

Ⓡ MEMPHIS CENTER APP/DEP CON 120.8

CLEARANCE DELIVERY PHONE: For CD ctc Huntsville Apch at 256-542-2070, When Apch clsd ctc Memphis ARTCC at 901-368-8453/8449.

ISBELL FLD (See FORT PAYNE on page 54)

ATLANTA

ATLANTA

H-6K, 9A, L-18H

IAP, AD