

MC GHEE TYSON (TYS)(KTYS) P (ANG ARNG) 10 S UTC-5(-4DT)

N35°48.67' W83°59.64'

ATLANTA

986 B LRA Class I, ARFF Index C NOTAM FILE TYS

H-9A, 12G, L-25B

RWY 05L-23R: H1.0000X150 (CONC-GRVD) S-120, D-250, 2D-550, 2D/2D2-1120 PCN 105R/B/W/T HIRL CL

IAP, AD

RWY 05L: MALSR. PAPI(P4L)—GA 3.0° TCH 55'. RVR-TMR Thld dsplcd 490'. 0.8% up.

RWY 23R: ALSF2. TDZL. PAPI(P4L)—GA 3.0° TCH 56'. RVR-TMR Thld dsplcd 505'. Rgt tfc. 0.4% down.

RWY 05R-23L: H9000X150 (ASPH-GRVD) S-75, D-250, 2D-489, 2D/2D2-1106 PCN 70 F/B/X/T HIRL CL

RWY 05R: TDZL. REIL. PAPI(P4L)—GA 3.0° TCH 50'. RVR-R Rgt tfc. 0.5% up.

RWY 23L: REIL. PAPI(P4L)—GA 3.0° TCH 50'. RVR-T Thld dsplcd 397'.

RUNWAY DECLARED DISTANCE INFORMATION

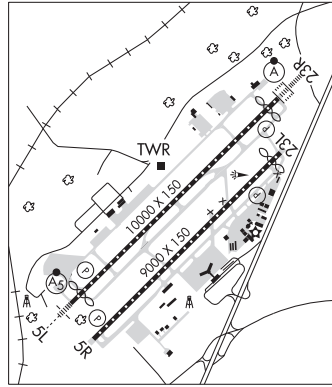
RWY 05L:TORA-10000 TODA-10000 ASDA-10000 LDA-9508

RWY 05R:TORA-9000 TODA-9000 ASDA-8600 LDA-8600

RWY 23L:TORA-9000 TODA-9000 ASDA-9000 LDA-8600

RWY 23R:TORA-10000 TODA-10000 ASDA-10000 LDA-9495

SERVICE: S4 FUEL 100LL, JET A, A++ OX 1 MILITARY—JASU (A/M32A-86) (A/M32A-95) FUEL A++ (Mil), A, A+ (C865-970-3049.) (NC-100LL) Mil contr fuel vbl. FLUID PRESAIR LPOX OIL O-148(Mil)



AIRPORT REMARKS: Attended continuously. Birds on and invof arpt, incrd Oct-Apr. Rscd not mntd 2130-1300Z± dly, wkend and hol. CTN: Ptn of Twy A near Rwy 05R apch end not vsb fm twr. CTN: Hold short line for Rwy 23L slightly N of Twy A-8. Rwy 05L-23R and Rwy 05R-23L wt brg cpty for 2S Indg gear is 175. Rwy 23L, Rwy 23R dep mntn rwy hdg until passing residential area S of extdd cntrln unless instrd by ATC. Wide body use ctin turning onto Twy A fm Ramp 4, 5 and 6.

MILITARY REMARKS: CSTMS/AG/IMG Mil customs 72 hr PPR. ANG PPR 24 hr PPR; ltd to offl bus only—Amgmt D266-4404/4419|C865-336-4404/4419. ANG Ops ctc SODA Ctl 303.025. COMD POST opr H24—DSN 266-4371, C865-336-4371. Amgr does not issue or store COMSEC for tsnt. Tmptry stor of classified materials up to TOP SECRET at Comd Post. ARNG ramp not suitable for AMC acct exc C-21. Civil PPR to use Twys G1; G2; G3 & G south of Twy G—ANG 865-336-4371. ARMY NG ANG base ops 1230-2200Z± Mon-Fri. PPR—D266-4601/4605.

AIRPORT MANAGER: 865-342-3088

WEATHER DATA SOURCES: ASOS (865) 981-4053 LLWAS. WSP.

COMMUNICATIONS: ATIS 128.35 UNICOM 122.95

RCO 122.2 (NASHVILLE RADIO)

Ⓡ KNOXVILLE APP/DEP CON 118.0 (051°-229°) 123.9 (230°-050°)

KNOXVILLE TOWER 121.2 GND CON 121.9 KNOXVILLE CLNC DEL 121.65

ANG OPS 303.025 (Call SODA Ctl) ARNG OPS 49.95 149.8 373.9

AIRSPACE: CLASS C svc ctc APP CON.

VOR TEST FACILITY (VOT) 112.0

RADIO AIDS TO NAVIGATION: NOTAM FILE TYS.

VOLUNTEER (H) (H) VORTACW 116.4 VXX Chan 111 N35°54.29' W83°53.68' 224° 7.4 NM to fld. 1315/3W.

ILS 110.3 I-TYS Rwy 05L. Class IE. LOC unusable byd 30° right of course.

ILS/DME 110.75 I-OXH Chan 44(Y) Rwy 23L. Class IE. LOC unusable inside 7.2 DME above 5,300 MSL to 2,000 MSL at 1.6 DME.

ILS 111.7 I-BUI Rwy 23R. Classification code iie.

ASR