

COURTLAND (9A4) 2 NE UTC-6(-5DT) N34°39.49' W87°20.91'

588 B NOTAM FILE ANB

RWY 13-31: H4994X100 (CONC) HIRL

RWY 13: REIL.

RWY 31: REIL.

RWY 18-36: H3484X150 (CONC)

RWY 18: Tree.

SERVICE: FUEL 100LL LGT HIRL Rwy 13-31 preset low ints, to incr ints and ACTIVATE REILS Rwy 13 and Rwy 31—CTAF. No twy lgts.

AIRPORT REMARKS: Unattended. 100LL fuel avbl 24/7 with credit card. Portions of ramp are in poor cond with loose chunks of conc and veg growth. Svrl conc blk/joints are uneven 200' fm pavement end of Rwy 36. Potholes and loose chunks of conc present on Rwy 18-36.

AIRPORT MANAGER: 256-566-7846

WEATHER DATA SOURCES: AWOS-3P 118.525 (256) 637-0903.

COMMUNICATIONS: CTAF/UNICOM 122.7

Ⓡ **HUNTSVILLE APP/DEP CON** 118.05 (1200-0600Z‡)

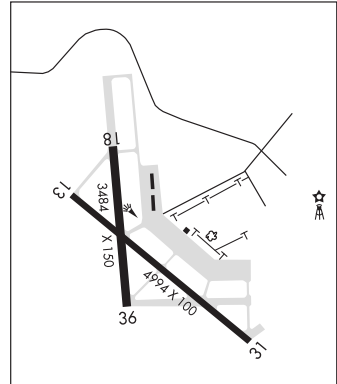
MEMPHIS CENTER APP/DEP CON 120.8 (0600-1200Z‡)

CLEARANCE DELIVERY PHONE: For CD ctc Huntsville Apch at 256-542-2070, when Apch clsd ctc Memphis ARTCC at 901-368-8453/8449.

RADIO AIDS TO NAVIGATION: NOTAM FILE MSL.

MUSCLE SHOALS (L) VORTACW 116.5 MSL Chan 112 N34°42.41' W87°29.49' 111° 7.7 NM to fld. 583/1E.

TACAN AZIMUTH & DME unusable:
046°-084° byd 25 NM blo 2,000'



ATLANTA
L-18H
IAP

CRAIG FLD (See SELMA on page 74)

CREOLA

MARK REYNOLDS/NORTH MOBILE CO (15A) 3 NE UTC-6(-5DT) N30°54.55' W87°59.78'

NEW ORLEANS

8 B NOTAM FILE ANB

RWY 03-21: 2000X180 (TURF) LIRL(NSTD)

RWY 03: Tree.

RWY 21: Trees.

SERVICE: LGT Call 251-689-9265 to ACTIVATE rwy lgts. Rwy 03-21 NSTD LIRL, no thld lgts, OTS indef.

AIRPORT REMARKS: Unattended. Rwy markings NSTD, marked with frangible pvc pipe.

AIRPORT MANAGER: 251-689-9265

COMMUNICATIONS: CTAF/UNICOM 122.8

CLEARANCE DELIVERY PHONE: For CD ctc Mobile Apch at 251-662-6236, when Apch clsd ctc Houston ARTCC at 281-230-5622.

CRIMSON N33°15.53' W87°32.21' NOTAM FILE ANB.

ATLANTA

(L) **VORTACW** 117.8 LDK Chan 125 236° 4.4 NM to Tuscaloosa Ntl. 370/3E.

H-6K, 9A, L-18H

TACAN AZIMUTH unusable:
100°-170°