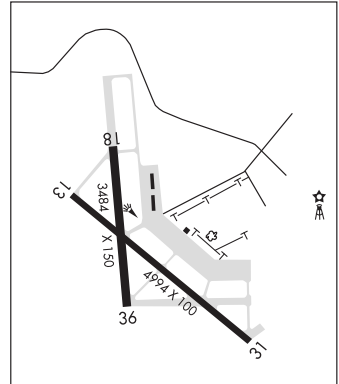


COURTLAND (9A4) 2 NE UTC-6(-5DT) N34°39.49' W87°20.91'

588 B NOTAM FILE ANB

RWY 13-31: H4994X100 (CONC) HIRL**RWY 13:** REIL.**RWY 31:** REIL.**RWY 18-36:** H3484X150 (CONC)**RWY 18:** Tree.**SERVICE:** FUEL 100LL LGT HIRL Rwy 13-31 preset low ints, to incr ints and ACTIVATE REILS Rwy 13 and Rwy 31—CTAF. No twy lgts.**AIRPORT REMARKS:** Unattended. 100LL fuel avbl 24/7 with credit card. Portions of ramp are in poor cond with loose chunks of conc and veg growth. Svrl conc blk/joints are uneven 200' fm pavement end of Rwy 36. Potholes and loose chunks of conc present on Rwy 18-36.**AIRPORT MANAGER:** 256-566-7846**WEATHER DATA SOURCES:** AWOS-3P 118.525 (256) 637-0903.**COMMUNICATIONS:** CTAF/UNICOM 122.7Ⓡ **HUNTSVILLE APP/DEP CON** 118.05 (1200-0600Z±)**MEMPHIS CENTER APP/DEP CON** 120.8 (0600-1200Z±)**CLEARANCE DELIVERY PHONE:** For CD ctc Huntsville Apch at 256-542-2070, when Apch clsd ctc Memphis ARTCC at 901-368-8453/8449.**RADIO AIDS TO NAVIGATION:** NOTAM FILE MSL.**MUSCLE SHOALS (L) VORTACW** 116.5 MSL Chan 112 N34°42.41' W87°29.49' 111° 7.7 NM to fld. 583/1E.**TACAN AZIMUTH & DME unusable:**
046°-084° byd 25 NM blo 2,000'ATLANTA
L-18H
IAP**CRAIG FLD** (See SELMA on page 73)**CREOLA****MARK REYNOLDS/NORTH MOBILE CO** (15A) 3 NE UTC-6(-5DT) N30°54.55' W87°59.78'

NEW ORLEANS

8 B NOTAM FILE ANB

RWY 03-21: 2000X180 (TURF) LIRL(NSTD)**RWY 03:** Trees.**RWY 21:** Trees.**SERVICE:** LGT Call 251-689-9265 to ACTIVATE rwy lgts. Rwy 03-21 NSTD LIRL, no thld lgts, OTS indef.**AIRPORT REMARKS:** Unattended. Rwy markings NSTD, marked with frangible pvc pipe.**AIRPORT MANAGER:** 251-689-9265**COMMUNICATIONS:** CTAF/UNICOM 122.8**CLEARANCE DELIVERY PHONE:** For CD ctc Mobile Apch at 251-662-6236, when Apch clsd ctc Houston ARTCC at 281-230-5622.**CRIMSON** N33°15.53' W87°32.21' NOTAM FILE ANB.**(L) VORTACW** 117.8 LDK Chan 125 236° 4.4 NM to Tuscaloosa Ntl. 370/3E.**TACAN AZIMUTH unusable:**
100°-170°ATLANTA
H-6K, 9A, L-18H