

BIRMINGHAM—SHUTTLESWORTH INTL (BHM)(KBHM) P (ANG ARNG) 4 NE UTC-6(-5DT)

ATLANTA
H-6K, 9A, L-18H
IAP, AD

N33°33.83' W86°45.14'

650 B LRA Class I, ARFF Index C NOTAM FILE BHM MON Airport

RWY 06-24: H12007X150 (ASPH-GRVD) S-175, D-205, 2S-175, 2D-350 PCN 65 F/C/X/T HIRL CL

RWY 06: ALSF2. TDZL. PAPI(P4L)—GA 3.0° TCH 68'. RVR-TMR Trees.

RWY 24: MALS. PAPI(P4L)—GA 3.0° TCH 69'. RVR-TMR Thld dsplcd 1205'. Ground. 0.7% down.

RWY 18-36: H7099X150 (ASPH-GRVD) S-75, D-170, 2S-175, 2D-240 PCN 45 F/C/X/T MIRL

RWY 18: REIL. PAPI(P4L)—GA 3.2° TCH 51'. Trees.

RWY 36: REIL. Trees.

LAND AND HOLD—SHORT OPERATIONS

LDG RWY	HOLD—SHORT POINT	AVBL LDG DIST
RWY 06	18-36	8700
RWY 36	06-24	5150

RUNWAY DECLARED DISTANCE INFORMATION

RWY 06: TORA-12007 TODA-12007 ASDA-12007 LDA-12007

RWY 18: TORA-7099 TODA-7099 ASDA-7099 LDA-7099

RWY 24: TORA-12007 TODA-12007 ASDA-12007 LDA-10801

RWY 36: TORA-7099 TODA-7099 ASDA-7099 LDA-7099

SERVICE: S4 FUEL 100LL, JET A OX 1, 2 LGT MALS. RWY 24 controlled by twr, ops unmonitored. **MILITARY—JASU** (AM32A-86D) 5(AM32-95) FUEL (A++100 (Mil)) FLUID SP PRESAIR OIL O-128-133-148(Mil)

AIRPORT REMARKS: Attended continuously. Bird activity invof rws. Twy H south of Twy H4 rstd to acct with wingspan less than 117'. Twy A between Twy A holding bay and Twy A3 rstd to acct with wingspan less than 150'. Twy F btn Rwy 18-36 and Twy G rstd to acct weighing 100,000 lbs or less. Twy N rstd to acct weighing 204,000 lbs or less. Twy M north of Rwy 06-24 rstd to acct to 75,000 lbs or less. Twy G rstd to acct 65,000 lbs or less.

MILITARY REMARKS: ANG PPR rqr for ANG ramp. Nml opr hr 1300-2330Z† Tue-Fri, clsd wknds and hol. No svc avbl outside these hr without prior apl. No lcl or round-robin fit by tran acct. Call Airfield OPS DSN 778-2555, C205-714-2555 for PPR 72 hr prior (96 hr for cargo msn). All inbd acct ctc ANG Comd Post "VULCN Control" no later than 15 min prior to ldg with PPR NR and support req. Space-A capabilities extremely ltd, PAX svc ltd availability.

AIRPORT MANAGER: (205) 599-0505

WEATHER DATA SOURCES: ASOS (205) 591-6172 WSP.

COMMUNICATIONS: ATIS 119.4 UNICOM 122.95

RCO 122.2 (ANNISTON RADIO)

® APP/DEP CON 123.8 (050°-230°) 127.675 (231°-049°)

TOWER 119.9 GND CON 121.7 CLNC DEL 125.675 PRE-TAXI CLNC 125.675

AIRSPACE: CLASS C svc ctc APP CON.

VOR TEST FACILITY (VOT) 110.0

RADIO AIDS TO NAVIGATION: NOTAM FILE ANB.

VULCAN (VH) (H) VORTAC 114.4 VUZ Chan 91 N33°40.21' W86°53.99' 129° 9.8 NM to fld. 743/2E.

VOR unusable:

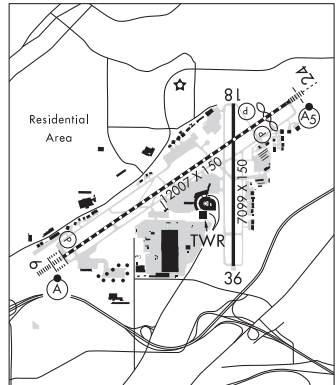
222°-226° byd 40 NM

MCDEN NDB (HW/LOM) 224 BH N33°30.69' W86°50.74' 059° 5.6 NM to fld. 569/3W. NOTAM FILE BHM.

ILS 110.3 I-BHM Rwy 06. Class IIE. LOM MCDEN NDB.

LOC/DME 111.3 I-BXO Chan 50 Rwy 18. LOC unusable byd 15° right of course. DME unusable byd 15 NM.

ILS/DME 109.5 I-ROE Chan 32 Rwy 24. Class IIE. Glideslope unusable byd 5° right of course.



BLOOD N31°49.85' W86°06.36' NOTAM FILE TOI.
NDB (MHW) 365 TOI 074° 5.0 NM to Troy Muni at N Kenneth Campbell Fld. 515/4W.

NEW ORLEANS
L-181

BOGGA N33°32.06' W85°55.88' NOTAM FILE ANB.
NDB (MHW/LOM) 211 AN 053° 4.9 NM to Anniston Rgnl. 590/4W.

L-181

BOLL WEEVIL N31°20.36' W85°58.92' NOTAM FILE ANB.
NDB (MHW) 352 BVG 122° 4.8 NM to Enterprise Muni. 374/3W. NDB unmonitored 0500-1200Z† Sun and Mon.
NDB unusable:
Byd 20 NM

NEW ORLEANS
L-22H