

**CHATTANOOGA**

**LOVELL FLD** (CHA)(KCHA) P (ARNG) 5 E UTC-5(-4DT) N35°02.11' W85°12.21' ATLANTA

H-9A, 12G, L-25A  
IAP, AD

683 B LRA Class I, ARFF Index B NOTAM FILE CHA  
**RWY 02-20:** H7400X150 (ASPH-GRVD) S-120, D-164, 2S-175,  
 2D-265 PCN 42 F/A/X/U HIRL CL

**RWY 02:** MALSR. PAPI(P4R)—GA 3.0° TCH 71'. RVR-TR  
**RWY 20:** ALSF2. TDZL. RVR-TR Railroad.

**RWY 15-33:** H5575X150 (ASPH-GRVD) S-120, D-164, 2S-175,  
 2D-265 PCN 14 F/A/Y/U MIRL

**RWY 15:** PAPI(P4L)—GA 3.0° TCH 45'. Thld dspcd 106'. Trees.  
**RWY 33:** PAPI(P4L)—GA 3.0° TCH 40'. Thld dspcd 575'. Trees.

**RUNWAY DECLARED DISTANCE INFORMATION**

**RWY 02:** TORA-7400 TODA-7400 ASDA-7100 LDA-7100  
**RWY 15:** TORA-5575 TODA-5575 ASDA-5575 LDA-5470  
**RWY 20:** TORA-7400 TODA-7400 ASDA-7400 LDA-7400  
**RWY 33:** TORA-5470 TODA-5470 ASDA-5470 LDA-5000

**SERVICE:** S4 FUEL 100LL, JET A OX 3, 4 LGT When ATCT CLOSED  
 ACTVT MALSR Rwy 02; TDZL Rwy 20; cntrn lgts Rwy 02-20; PAPI  
 Rwy 02; HIRL Rwy 02-20—CTAF. When ATCT clsd MIRL Rwy 15-33  
 unavbl; ALSF2 Rwy 20 on med intst. **MILITARY—FUEL A+**  
 (C423-855-2299. 30 min PN rqr. ) (NC-100LL, A)

**AIRPORT REMARKS:** Attended continuously. Birds invof arpt. Tnst acct avoid  
 scity zone wi 300 ft of trml bldg. Hold short instr read back rqrtd. Flight  
 Notification Service (ADCUS) available.

**AIRPORT MANAGER:** 423-855-2200

**WEATHER DATA SOURCES:** ASOS 119.85 (423) 499-5973. LLWAS.

**COMMUNICATIONS:** CTAF 118.3 ATIS 119.85 UNICOM 122.95

**CHATTANOOGA RCO 122.2** (NASHVILLE RADIO)

Ⓡ **CHATTANOOGA APP/DEP CON 119.2** (200°-020°) 125.1 (021°-199°) (1100-0450Z‡)

**ATLANTA CENTER APP/DEP CON 132.05** (0450-1100Z‡)

**CHATTANOOGA TOWER 118.3** (1100-0450Z‡) **GND CON 121.7 CLNC DEL 120.95**

**CLEARANCE DELIVERY PHONE:** For CD if una to ctc on FSS freq, ctc Chattanooga Apch at 423-855-6478, when Apch clsd ctc  
 Atlanta ARTCC at 770-210-7692.

**AIRSPACE:** CLASS C svc ctc **APP CON** svc 1100-0450Z‡; other times CLASS E.

**RADIO AIDS TO NAVIGATION:** NOTAM FILE CHA.

**CHOO CHOO (H) (H) VORTACW 115.8** GQO Chan 105 N34°57.68' W85°09.20' 330° 5.1 NM to fld. 1014/1E.

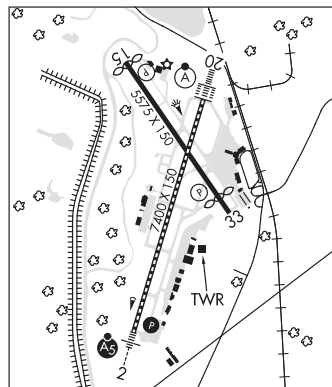
TACAN AZIMUTH unusable:  
 075°-110°  
 260°-290°  
 340°-350°. TACAN AZIMUTH OTS indef  
 TACAN DME unusable:  
 260°-290°

**DAISYNDB (HW) 341** CQN N35°09.99' W85°09.44' 198° 8.2 NM to fld. 936/2W. NDB unmonitored when ATCT  
 closed.

**ILS 108.3 I-CGW** Rwy 02. Class IB. ILS unmntd when ATCT clsd. Glideslope unusable byd 4° left of course; byd  
 7° right of course.

**ILS 109.5 I-CHA** Rwy 20. Class IIE. Unmonitored when ATCT closed.

**ASR** (1100-0450Z‡)



**CHATTANOOGA** N35°02.12' W85°12.23'  
**RCO 122.2** (NASHVILLE RADIO)

ATLANTA  
 L-25A

**CHILHOWEE** (See BENTON on page 391)

**CHOO CHOO** N34°57.68' W85°09.20' NOTAM FILE CHA.  
**(H) (H) VORTACW 115.8** GQO Chan 105 330° 5.1 NM to Lovell Fld. 1014/1E.

ATLANTA  
 H-9A, 12G, L-25A

TACAN AZIMUTH unusable:  
 075°-110°  
 260°-290°  
 340°-350°. TACAN AZIMUTH OTS indef  
 TACAN DME unusable:  
 260°-290°