

BIRMINGHAM—SHUTTLESWORTH INTL (BHM)(KBHM) P (ANG ARNG) 4 NE UTC-6(-5DT)

ATLANTA

N33°33.83' W86°45.14'

H-6K, 9A, L-18H

650 B LRA Class I, ARFF Index C NOTAM FILE BHM MON Airport

IAP, AD

RWY 06-24: H12007X150 (ASPH-GRVD) S-175, D-205, 2S-175,

2D-350 PCN 65 F/C/X/T HIRL CL

RWY 06: ALSF2. TDZL. PAPI(P4L)—GA 3.0° TCH 68'. RVR-TMR Trees.**RWY 24:** MALSR. PAPI(P4L)—GA 3.0° TCH 69'. RVR-TMR Thld displcd 1205'. Ground. 0.7% down.**RWY 18-36:** H7099X150 (ASPH-GRVD) S-75, D-170, 2S-175,

2D-240 PCN 45 F/C/X/T MIRL

RWY 18: REIL. PAPI(P4L)—GA 3.2° TCH 51'. Trees.**RWY 36:** REIL. Trees.**LAND AND HOLD—SHORT OPERATIONS**

LDG RWY	HOLD—SHORT POINT	AVBL LDG DIST
RWY 06	18-36	8700
RWY 36	06-24	5150

RUNWAY DECLARED DISTANCE INFORMATION**RWY 06:** TORA-12007 TODA-12007 ASDA-12007 LDA-12007**RWY 18:** TORA-7099 TODA-7099 ASDA-7099 LDA-7099**RWY 24:** TORA-12007 TODA-12007 ASDA-12007 LDA-10801**RWY 36:** TORA-7099 TODA-7099 ASDA-7099 LDA-7099**SERVICE:** S4 FUEL 100LL, JET A OX 1, 2 LGT MALSR Rwy 24controlled by twr, ops unmonitored. **MILITARY—JASU** (A/M32A-86D) 5(AM32-95) **FUEL** (A++100 (Mil)) **FLUID SP** PRESAIR OIL O-128-133-148(Mil)**AIRPORT REMARKS:** Attended continuously. Bird activity invof rws. Twy H south of Twy H4 rstd to acft with wingspan less than 117'. Twy A between Twy A holding bay and Twy A3 rstd to acft with wingspan less than 150'. Twy F btn Rwy 18-36 and Twy G rstd to acft weighing 100,000 lbs or less. Twy N rstd to acft weighing 204,000 lbs or less. Twy M north of Rwy 06-24 rstd to acft 75,000 lbs or less. Twy G rstd to acft 65,000 lbs or less. Flight Notification Service (ADCUS) avbl.**MILITARY REMARKS:** ANG PPR rqr for ANG ramp. Nml opr hr 1300-2330Z† Tue-Fri, clsd wknds and hol. No svc avbl outside these hr without prior apvl. No lcl or round-robin flt by tran acft. Call Afld OPS DSN 778-2555, C205-714-2555 for PPR 72 hr prior (96 hr for cargo msn). All inbd acft ctc ANG Comd Post DIXIE CON no later than 15 min prior to ldg with PPR Nr and support rqr. Space-A capabilities extremely ltd, PAX svc ltd avbl.**AIRPORT MANAGER:** (205) 599-0505**WEATHER DATA SOURCES:** ASOS (205) 591-6172 WSP.**COMMUNICATIONS:** ATIS 119.4 UNICOM 122.95

RCO 122.2 (ANNISTON RADIO)

® APP/DEP CON 123.8 (050°-230°) 127.675 (231°-049°)

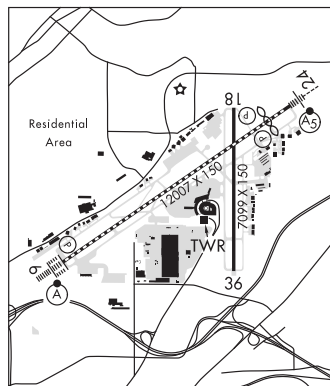
TOWER 119.9 GND CON 121.7 CLNC DEL 125.675 PRE-TAXI CLNC 125.675

AIRSPACE: CLASS C svc ctc APP CON.**VOR TEST FACILITY (VOT)** 110.0**RADIO AIDS TO NAVIGATION:** NOTAM FILE ANB.**VULCAN (H) VORTAC** 114.4 VUZ Chan 91 N33°40.21' W86°53.99' 129° 9.8 NM to fld. 743/2E.**MCDEN NDB (HW/LOM)** 224 BH N33°30.69' W86°50.74' 059° 5.6 NM to fld. 569/3W. NOTAM FILE BHM.

ILS 110.3 I-BHM Rwy 06. Class IIE. LOM MCDEN NDB.

LOC/DME 111.3 I-BXO Chan 50 Rwy 18. LOC unusable byd 15° right of course. DME unusable byd 15 NM.

ILS/DME 109.5 I-ROE Chan 32 Rwy 24. Class IIE. Glideslope unusable byd 5° right of course.

**BLOOD** N31°49.85' W86°06.36' NOTAM FILE TOI.

NEW ORLEANS

NDB (MHW) 365 TOI 074° 5.0 NM to Troy Muni at N Kenneth Campbell Fld. 515/4W.

L-181

BOGGA N33°32.06' W85°55.88' NOTAM FILE ANB.

NDB (MHW/LOM) 211 AN 053° 4.9 NM to Anniston Rgnl. 590/4W.

L-181

BOLL WEEVIL N31°20.36' W85°58.92' NOTAM FILE ANB.

NEW ORLEANS

NDB (MHW) 352 BVG 122° 4.8 NM to Enterprise Muni. 374/3W. NDB unmonitored 0500-1200Z† Sun and

L-22H

Mon.

NDB unusable:

Byd 20 NM