

COBB CO INTL/MCCOLLUM FLD (See ATLANTA on page 202)

COCHRAN (48A) 4 E UTC-5(-4DT) N32°24.04' W83°16.70'

377 B NOTAM FILE MCN

RWY 11-29: H4400X75 (ASPH) MIRL 1.0% up NW

RWY 11: PAPI(P2L)—GA 3.25° TCH 45'. Trees.

RWY 29: PAPI(P2L)—GA 3.0° TCH 40'. Trees.

RWY 05-23: H3202X50 (ASPH) S-25 0.3% up NE

RWY 05: Trees.

RWY 23: Thld dsplcd 140'. Trees.

RUNWAY DECLARED DISTANCE INFORMATION

RWY 23: TORA-3202 TODA-3202 ASDA-3202 LDA-3062

SERVICE: S2 FUEL 100LL LGT MIRL Rwy 11-29 preset low

dawn-1300, dusk-0200Z†; to actvrt or incrs intst—CTAF.

AIRPORT REMARKS: Attended Mon-Sat 1300-1700Z†. Rwy 05-23 is daylight use only. 24 hr fuel self svc with major credit card. NSTD turnarounds, inadequate separation Rwy 05-23. Rwy 05-23 pavement in poor cond.

AIRPORT MANAGER: 478-291-6582

WEATHER DATA SOURCES: AWOS-3PT 120.975 (478) 271-5897.

COMMUNICATIONS: CTAF/UNICOM 122.8

Ⓡ ATLANTA APP/DEP CON 124.2 (1115-0400Z†)

ATLANTA CENTER APP/DEP CON 134.5 (0400-1115Z†)

CLEARANCE DELIVERY PHONE: For CD ctc Atlanta Apch at 678-364-6132, when Apch clsd ctc Atlanta ARTCC at 770-210-7692.

RADIO AIDS TO NAVIGATION: NOTAM FILE MCN.

VIENNA (VL) (L) VORTAC 116.5 VNA Chan 112 N32°12.81' W83°29.84' 044° 15.8 NM to fld. 300/1E.

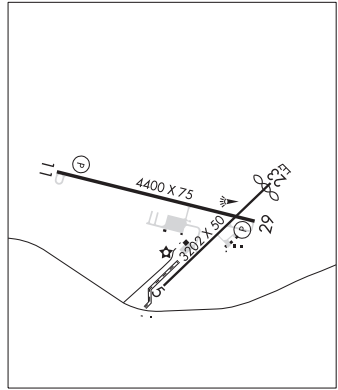
DME unusable:

014°-024°

ATLANTA

L-18J

IAP



COFFEE CO N31°24.29' W82°55.43' NOTAM FILE MCN.

NDB (MHW) 390 OWC 043° 5.4 NM to Douglas Muni. 230/6W. NDB unmonitored 2300-1300Z†.

JACKSONVILLE

L-24H