

**COCHRAN** (48A) 4 E UTC-5(-4DT) N32°24.04' W83°16.70'

377 B NOTAM FILE MCN

**RWY 11-29:** H4400X75 (ASPH) MIRL 1.0% up NW**RWY 11:** PAPI(P2L)—GA 3.25° TCH 45'. Trees.**RWY 29:** PAPI(P2L)—GA 3.0° TCH 40'. Trees.**RWY 05-23:** H3202X50 (ASPH) S-25 0.3% up NE**RWY 05:** Trees.**RWY 23:** Thld dsplcd 140'. Trees.**RUNWAY DECLARED DISTANCE INFORMATION****RWY 23:** TORA-3202 TODA-3202 ASDA-3202 LDA-3062**SERVICE:** S2 FUEL 100LL LGT MIRL Rwy 11-29 preset low dawn-1300, dusk-0200Z†; to actvt or incrs instst—CTAF.**AIRPORT REMARKS:** Attended Mon-Sat 1300-1700Z†. Rwy 05-23 is daylight use only. 24 hr fuel self svc with major credit card. NSTD turnarounds, inadequate separation Rwy 05-23. Rwy 05-23 pavement in poor cond.**AIRPORT MANAGER:** 478-291-6582**WEATHER DATA SOURCES:** AWOS-3PT 120.975 (478) 271-5897.**COMMUNICATIONS:** CTAF/UNICOM 122.8

Ⓡ ATLANTA APP/DEP CON 124.2 (1115-0400Z†)

ATLANTA CENTER APP/DEP CON 134.5 (0400-1115Z†)

**CLEARANCE DELIVERY PHONE:** For CD ctc Atlanta Apch at 678-364-6132, when Apch clsd ctc Atlanta ARTCC at 770-210-7692.**RADIO AIDS TO NAVIGATION:** NOTAM FILE MCN.**VIENNA (VL) (L) VORTAC** 116.5 VNA Chan 112 N32°12.81' W83°29.84' 044° 15.8 NM to fld. 300/1E.

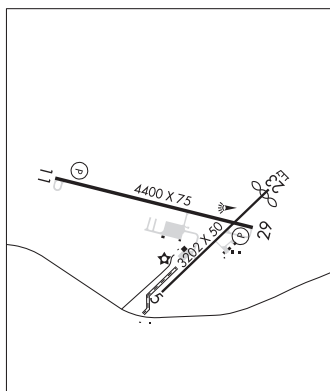
DME unusable:

014°-024°

ATLANTA

L-18J

IAP

**COFFEE CO** N31°24.29' W82°55.43' NOTAM FILE MCN.**NDB (MHW)** 390 OWC 043° 5.4 NM to Douglas Muni. 230/6W. NDB unmonitored 2300-1300Z†.

JACKSONVILLE

L-24H

**COLUMBUS** (CSG)(KCSG) 3 NE UTC-5(-4DT) N32°30.98' W84°56.33'

398 B ARFF Index—See Remarks NOTAM FILE CSG

**RWY 06-24:** H6997X150 (ASPH-GRVD) D-160, 2D-250

PCR 458 F/C/X/T HIRL

**RWY 06:** MALSR. PAPI(P4L)—GA 2.61° TCH 48'. RVR-T Trees.**RWY 24:** REIL. PAPI(P4L)—GA 3.0° TCH 43'. Bldg.**RWY 13-31:** H3997X75 (ASPH-PFC) S-12 PCN 12 F/B/W/T MIRL 0.7% up NW**RWY 13:** REIL. PAPI(P4L)—GA 3.0° TCH 36'. Tree.**RWY 31:** REIL. PAPI(P4L)—GA 3.0° TCH 42'. Thld dsplcd 150'. Pole.**RUNWAY DECLARED DISTANCE INFORMATION****RWY 06:** TORA-6997 TODA-6997 ASDA-6997 LDA-6997**RWY 13:** TORA-3997 TODA-3997 ASDA-3907 LDA-3907**RWY 24:** TORA-6997 TODA-6997 ASDA-6997 LDA-6997**RWY 31:** TORA-3997 TODA-3997 ASDA-3997 LDA-3847**SERVICE:** S4 FUEL 100LL, JET A LGT All lgts oper 1400-0200Z†. After 0200Z†, ACTVT MALSR Rwy 06; REIL Rwy 24; PAPI Rwy 06 and 24; HIRL Rwy 06-24; MIRL Rwy 13-31; twy lgts; windcone lgts—CTAF. REIL Rwy 13 and Rwy 31; PAPI Rwy 13 and 31 oper consly.**AIRPORT REMARKS:** Attended continuously. Rwy 13-31 clsd to acr. Rwy 13-31 not avbl for sked acr opns with more than psgr seats or unsked acr at least 31 psgr seats. Fuel: self serve 100LL avbl 24 hrs. Birds on and invof arpt. Class I, ARFF Index A. Index B aircraft rescue and firefighting equipment avbl. Be alert for Rwy 06 at Twy D int dep instructions with rwy rmng 5085 ft TORA/TODA/ASDA. Be alert for Rwy 06 at Twy F int dep instructions with rwy rmng 5623 ft TORA/TODA/ASDA.**AIRPORT MANAGER:** 706-324-2449**WEATHER DATA SOURCES:** ASOS (706) 748-8097 LLWAS.**COMMUNICATIONS:** CTAF 120.1 ATIS 127.75 UNICOM 122.95

RCO 122.2 (MACON RADIO)

Ⓡ ATLANTA APP/DEP CON 125.5 (1115-0300Z†) 126.55 (7000' and abv)

ATLANTA CENTER APP/DEP CON 120.45 (0300-1115Z†)

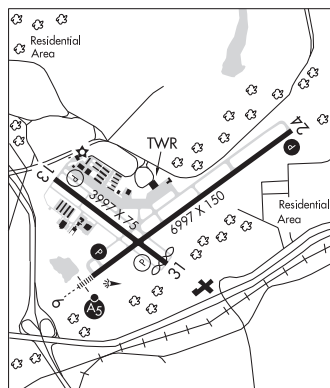
TOWER 120.1 (1400-0200Z†) GND CON 121.9

**CLEARANCE DELIVERY PHONE:** For CD if una to ctc on FSS freq, ctc Atlanta Apch at 678-364-6132, when ATCT clsd ctc Atlanta ARTCC at 770-210-7692.

ATLANTA

H-9A, 12F, L-18I

IAP, AD



CONTINUED ON NEXT PAGE

SE, 17 APR 2025 to 12 JUN 2025

CONTINUED FROM PRECEDING PAGE

AIRSPACE: CLASS D svc 1400-0200Z†; other times CLASS E.

RADIO AIDS TO NAVIGATION: NOTAM FILE CSG.

(L) TACAN Chan 118 CSG (117.1) N32°36.92' W85°01.06' 145° 7.1 NM to fld. 635/1E.

TACAN AZIMUTH unusable:

015°-030°

TACAN DME unusable:

015°-030°

FENIX NDB (LOMW) 355 CS N32°27.12' W85°02.52' 056° 6.5 NM to fld. 355/2W.

ILS 110.3 I-CSG Rwy 06. Class IB. LOM FENIX NDB. Autopilot cpd apch NA blw 1,000' MSL. Glideslope unusable wi 0.9 NM.

**CONEY** N31°59.87' W83°51.71' NOTAM FILE MCN.

NDB (MHW) 400 OHY 103° 4.5 NM to Crisp Co-Cordele. 313/6W. NDB unmonitored 2200-1200Z†.

JACKSONVILLE

L-18J

**COOK CO** (See ADEL on page 190)

**CORDELE**

**CRISP CO-CORDELE** (CKF)(KCKF) 2 NE UTC-5(-4DT) N31°59.33' W83°46.43'

310 B NOTAM FILE MCN

RWY 06-24: H5008X100 (ASPH) S-24

RWY 06: Thld dspcld 126'. Tree.

RWY 24: Thld dspcld 140'. Trees. Rgt tfc.

RWY 10-28: H5001X150 (ASPH) S-30, D-45 MIRL

RWY 10: ODALS. REIL. PAPI(P2L)—GA 3.0° TCH 42'. Trees.

RWY 28: REIL. PAPI(P2L)—GA 3.0° TCH 45'. Trees. Rgt tfc.

SERVICE: S4 FUEL 100LL, JET A+ LGT MIRL Rwy 10-28 and PAPI Rwys 10 and 28 preset on low intst dusk-0300Z†; to incr intst and actvt aft 0300Z†—CTAF. Actvt ODALS Rwy 10 and REIL Rwy 10 and 28—CTAF.

AIRPORT REMARKS: Attended Nov-Mar Mon-Sat 1300-2200Z†, Apr-Oct Mon-Sat 1300-2300Z†.

AIRPORT MANAGER: 229-276-2673

WEATHER DATA SOURCES: AWOS-3PT 119.325 (229) 276-2669.

COMMUNICATIONS: CTAF/UNICOM 123.05

Ⓡ JACKSONVILLE CENTER APP/DEP CON 125.75

CLEARANCE DELIVERY PHONE: For CD etc Jacksonville ARTCC at 904-845-1592.

RADIO AIDS TO NAVIGATION: NOTAM FILE MCN.

VIENNA (VL) (L) VORTAC 116.5 VNA Chan 112 N32°12.81' W83°29.84' 225° 19.5 NM to fld. 300/1E.

DME unusable:

014°-024°

CONEY NDB (MHW) 400 OHY N31°59.87' W83°51.71' 103° 4.5 NM to fld. 313/6W. NDB unmonitored 2200-1200Z†.

LOC 108.9 I-CKF Rwy 10. Class IA.

JACKSONVILLE

H-9B, 12F, L-18J

IAF

