

**TALLAHASSEE INTL** (TLH)(KTLH) 4 SW UTC-5(-4DT) N30°23.81' W84°21.05'

83 B Class I, ARFF Index C NOTAM FILE TLH MON Airport

**RWY 09-27:** H8000X150 (ASPH-GRVD) S-115, D-170, 2D-330

PCN 48 F/A/X/T HIRL CL

**RWY 09:** REIL. PAPI(P4L)—GA 3.0° TCH 58'. RVR-TR

**RWY 27:** ALSF2. TDZL. PAPI(P4L)—GA 3.0° TCH 58'.

RVR-TR 0.3% up.

**RWY 18-36:** H7000X150 (ASPH-GRVD) S-115, D-170, 2D-330

PCN 47 F/A/X/T HIRL 0.4% up N

**RWY 18:** REIL. PAPI(P4L)—GA 3.0° TCH 55'. RVR-R

**RWY 36:** MALSR. PAPI(P4L)—GA 3.0° TCH 54'. RVR-T

**SERVICE:** S4 FUEL 100LL, JET A OX 1, 3 LGT When ATCT clsd

ACTVT MALSR 36; REIL Rwy 09 and 18; PAPI Rwy 09, 27, 18 and

36; HIRL Rwy 09-27 and 18-36—CTAF. ALSF2 Rwy 27 preset on med inst.

**AIRPORT REMARKS:** Attended continuously. Birds on and invof arpt.

Movement area of Twy Z begins at the int of Twy B8 and proceeds east to the int of Twy B7 this twy is not for use by air carrier ops. Asph btn Twy B8 and Twy A12 is for helicopter ops, Twy Z from Twy A12 to the ramp is open to acft with wingspan of 50' or less. Longl and transverse cracks prsnt on Rwy 18-36.

**AIRPORT MANAGER:** 850-891-7802

**WEATHER DATA SOURCES:** ASOS 119.45 (850) 576-3665. LLWAS.

**COMMUNICATIONS:** CTAF 118.7 ATIS 119.45 UNICOM 123.075

TALLAHASSEE RCO 122.2 (GAINESVILLE RADIO)

SEMINOLE RCO 122.1R 117.5T (GAINESVILLE RADIO)

Ⓡ APP/DEP CON 128.7 (181°-360°) 135.8 (001°-180°) (1100-0400Z‡)

JACKSONVILLE CENTER APP/DEP CON 128.625 (0400-1100Z‡)

TOWER 118.7 (1100-0400Z‡) GND CON 121.9 CLNC DEL 126.65

**CLEARANCE DELIVERY PHONE:** For CD if una to ctc on FSS freq, ctc Tallahassee Apch at 850-942-8311, when Apch clsd ctc Jacksonville ARTCC at 904-845-1592.

**AIRSPACE:** CLASS C svc ctc APP CON svc per TWR/NOTAM 1100-0400Z‡; other times CLASS E.

**RADIO AIDS TO NAVIGATION:** NOTAM FILE TLH.

SEMINOLE (VH) (H) VORTAC 117.5 SZW Chan 122 N30°33.37' W84°22.44' 171° 9.6 NM to fld. 178/2E.

VOR unusable:

006°-034° byd 40 NM

050°-052° byd 40 NM

060°-062° byd 40 NM

065°-068° byd 40 NM

071°-075° byd 40 NM

096°-099° byd 40 NM

103°-107° byd 40 NM

156°-161° byd 40 NM

175°-177° byd 40 NM

180°-190° byd 40 NM blo 18,000'

212°-216° byd 40 NM

220°-223° byd 40 NM

241°-243° byd 40 NM

253°-255° byd 40 NM

261°-270° byd 40 NM

274°-301° byd 40 NM

278°-288° byd 7 NM blo 1,900'

302°-312° byd 40 NM blo 2,000'

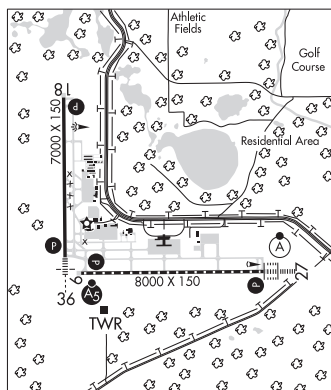
302°-312° byd 58 NM

318°-352° byd 40 NM

ILS/DME 111.9 I-PLQ Chan 56 Rwy 27. Class IIE. Unmonitored when ATCT clsd.

ILS/DME 110.3 I-TLH Chan 40 Rwy 36. Class IE.

ASR (1100-0400Z‡)



**JACKSONVILLE**

H-8H, L-21D, 22I

IAP, AD