

**MIAMI INTL (MIA)(KMIA)** 8 NW UTC-5(-4DT) N25°47.72' W80°17.41'

**MIAMI**  
H-81, L-23C, A  
IAP, AD

9 B AOE Class I, ARFF Index E NOTAM FILE MIA

**RWY 09-27:** H13016X150 (ASPH-GRVD) S-120, D-250, 2S-175, 2D-550, 2D/2D2-1120 PCR 851 F/A/X/T HIRL CL  
**RWY 09:** MALSR. PAPI(P4L)—GA 3.0° TCH 72'. RVR-TMR Thld dspclcd 1358'. Railroad. Rgt tfc.

**RWY 27:** MALSR. PAPI(P4L)—GA 3.0° TCH 71'. RVR-TMR Thld dspclcd 261'.

**RWY 08R-26L:** H10506X200 (ASPH-GRVD) S-120, D-250, 2S-175, 2D-550, 2D/2D2-1120 PCR 851 F/A/X/T HIRL CL

**RWY 08R:** MALSR. TDZL. PAPI(P4L)—GA 3.0° TCH 77'. RVR-TR  
**RWY 26L:** MALSF. PAPI(P4L)—GA 3.0° TCH 73'. RVR-TR Rgt tfc.

**RWY 12-30:** H9360X150 (ASPH-GRVD) S-120, D-250, 2S-175, 2D-550, 2D/2D2-1120 PCR 780 F/A/X/T HIRL CL

**RWY 12:** MALSR. PAPI(P4R)—GA 3.0° TCH 72'. RVR-TR Tower.  
**RWY 30:** MALSR. PAPI(P4L)—GA 3.0° TCH 71'. RVR-TR Thld dspclcd 945'. Tree.

**RWY 08L-26R:** H8600X150 (ASPH-GRVD) S-120, D-250, 2D-550, 2D/2D2-1120 PCR 711 F/A/X/T HIRL CL

**RWY 08L:** REIL. PAPI(P4L)—GA 3.0° TCH 60'.  
**RWY 26R:** REIL. PAPI(P4L)—GA 3.0° TCH 60'.

**LAND AND HOLD-SHORT OPERATIONS**

LDG RWY	HOLD-SHORT POINT	AVBL LDG DIST
RWY 09	12-30	9749
RWY 12	09-27	8100

**RUNWAY DECLARED DISTANCE INFORMATION**

<b>RWY 08L:</b> TORA-8600 TODA-8600 ASDA-8600 LDA-8600
<b>RWY 08R:</b> TORA-10506 TODA-10506 ASDA-10506 LDA-10506
<b>RWY 09:</b> TORA-13016 TODA-13016 ASDA-12755 LDA-11397
<b>RWY 12:</b> TORA-9355 TODA-9355 ASDA-8579 LDA-8579
<b>RWY 26L:</b> TORA-10506 TODA-10506 ASDA-10220 LDA-10220
<b>RWY 26R:</b> TORA-8600 TODA-8600 ASDA-8600 LDA-8600
<b>RWY 27:</b> TORA-13016 TODA-13016 ASDA-13016 LDA-12755
<b>RWY 30:</b> TORA-9355 TODA-9355 ASDA-8853 LDA-7913

**SERVICE:** S4 FUEL 100, JET A OX 1, 2, 3, 4

**NOISE:** All turbojet acct use dsnt noise abatement dep profile from all rwys exc A320, B727, B737-800, B767-400, and DC9 which should use close-in noise abatement profile. Close-in noise abatement dep profile to be used by A319/320/321, A330-200/300, B727-200, B737-800/900, B767-200/300/400/700, B747-800, B777-300/77L/77W, and MD-11. Dsnt noise abatement dep profile to be used by all other turbojet acct.

**AIRPORT REMARKS:** Attended continuously. Birds on and invof arpt. CLOSED non-engine acct. Rwy 08L-26R CLOSED 0800-1700Z± when Rwy 08R-26L and Rwy 09-27 are in use. Rwy 12-30 CLOSED 0800-1700Z± when Rwy 08R-26L and Rwy 09-27 are in use. No int dep auth wo PPR fm amgr. Acft with wingspan greater than 78' are prohibited from entering the GAC ramp. Acft with a wingspan greater than 171' are prohibited from taxiing on Twy P, east of Twy U. PPR for inbd mil flts 100 NM on freq 130.5. All diversion ctc frequency 130.5 upon arrival. All medical emerg arr, with the exception of air ambulance flts, must secure doors until ARFF is on scene. ASDE-X in use. Operate transponders with altitude reporting mode and ADS-B (if equipped) enabled on all airport surfaces. US CBP and EAPIS avbl. Flight Notification Service (ADCUS) avbl.

**AIRPORT MANAGER:** 305-876-7038

**WEATHER DATA SOURCES:** ASOS 119.15 (305) 870-0235. TDWR.

**COMMUNICATIONS:** D-ATIS ARR 119.15 (305) 869-5445 D-ATIS DEP 133.675 (305) 869-5446 UNICOM 123.0

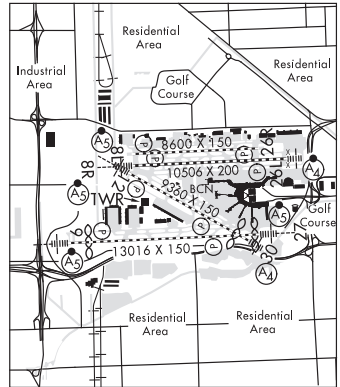
Ⓡ APP CON 124.85 (270°-089°) 120.5 (090°-269°) 125.75 (270°-089°)

TOWER 118.3 (270°-089°) 123.9 (090°-269°) GND CON 121.8 (Rwy 8L, 8R, 12, 26L, 26R) 127.5 (Rwy 09, 27, 30) CLNC DEL 135.35 RAMP CTL 120.35

Ⓡ DEP CON 119.45 (270°-089°) 125.5 (090°-269°)

CPDLC (LOGON KUSA)

PDC



CONTINUED ON NEXT PAGE

## CONTINUED FROM PRECEDING PAGE

**AIRSPACE: CLASS B** See VFR Terminal Area Chart.

**RADIO AIDS TO NAVIGATION:** NOTAM FILE MIA.

**DOLPHIN (VH) (H) VORTAC** 113.9 DHP Chan 86 N25°48.00' W80°20.94' 099° 3.2 NM to fld. 6/4W.

TACAN AZIMUTH unusable:

055°-065° byd 35 NM blo 3,000'

185°-195° byd 23 NM

226°-236° byd 35 NM

DME unusable:

055°-065° byd 35 NM blo 3,000'

VOR unusable:

034°-037° byd 40 NM

090°-101° byd 40 NM blo 5,500'

090°-101° byd 54 NM

102°-111° byd 40 NM

**LOC/DME** 109.3 I-ROY Chan 30 Rwy 08L. LOC unusable byd 30° left of course and 25° right of course. DME unusable byd 30° left of course.

**ILS/DME** 110.3 I-MFA Chan 40 Rwy 08R. Class IT. DME unusable byd 23° right of course. LOC unusable byd 20° right of course.

**ILS/DME** 110.9 I-BUL Chan 46 Rwy 09. Class IA.

**ILS/DME** 108.9 I-GEM Chan 26 Rwy 12. Class IT. Glideslope unusable byd 5° right of course; byd 6° left of course.

**ILS/DME** 109.1 I-VIN Chan 28 Rwy 26L. Class IE.

**LOC/DME** 109.3 I-CNV Chan 30 Rwy 26R.

**ILS** 109.5 I-MIA Rwy 27. Class IT.

**ILS/DME** 111.7 I-DCX Chan 54 Rwy 30. Class IE.

**COMM/NAV/WEATHER REMARKS:** PPR 3 hrs prior to all arr on the General Aviation Center (GAC) ramp 305-876-7550 ctc Ramp Ctl and upon arr on freq 131.600.