

**WALNUT RIDGE RGNL** (ARG)(KARG) 4 NE UTC-6(-5DT) N36°07.48' W90°55.51'  
279 B NOTAM FILE ARG

MEMPHIS  
H-6J, L-16G  
IAP

**RWY 04-22:** H6001X150 (ASPH) S-40, D-60, 2D-110 MIRL

**RWY 04:** MALSF.

**RWY 22:** PAPI(P4L)—GA 3.0° TCH 47'.

**RWY 13-31:** H5003X150 (CONC) S-40, D-60, 2D-110

**RWY 13:** Road.

**RWY 31:** Berm.

**RWY 18-36:** H5001X150 (CONC) S-40, D-60, 2D-110 MIRL

**RWY 18:** ODALS. REIL. Road.

**SERVICE:** S4 FUEL 100LL, JET A LGT ACTVT MALSF Rwy 04; ODALS Rwy 18; REIL Rwy 18; MIRL Rwy 04-22, Rwy 18-36—CTAF.

**AIRPORT REMARKS:** Attended Mon-Fri 1400-2300Z†. If arpt attendant not avbl, call 870-886-5432. Fee chrg unless prior arrangements made. Self svc fuel avbl 24 hrs with credit card. Government contract fuel avbl. Arpt CLOSED to B727 acct. Agricultural ops on and invof arpt Apr—Sep. Migratory birds invof arpt Oct—Jan. Rwy 13 and Rwy 31 markings faded.

**AIRPORT MANAGER:** 870-886-5432

**WEATHER DATA SOURCES:** AWOS-3PT 126.525 (870) 886-2537.

**COMMUNICATIONS:** CTAF/UNICOM 122.8

**RCO 122.1R 114.5T** (JONESBORO RADIO)

**RCO 122.5** (JONESBORO RADIO)

Ⓜ **MEMPHIS CENTER APP/DEP CON 120.075**

**CLEARANCE DELIVERY PHONE:** For CD ctc Memphis ARTCC at 901-368-8453/8449.

**RADIO AIDS TO NAVIGATION:** NOTAM FILE ARG.

(VH) (H) **VORTAC 114.5** ARG Chan 92 N36°06.60' W90°57.22' 054° 1.6 NM to fld. 265/4E.

VOR unusable:

010°-021° byd 40 NM blo 3,000'

010°-021° byd 55 NM

022°-052° byd 40 NM

053°-078° byd 40 NM blo 2,300'

053°-078° byd 64 NM

079°-175° byd 40 NM blo 18,000'

195°-216° byd 40 NM blo 18,000'

217°-278° byd 40 NM blo 3,000'

217°-278° byd 61 NM blo 18,000'

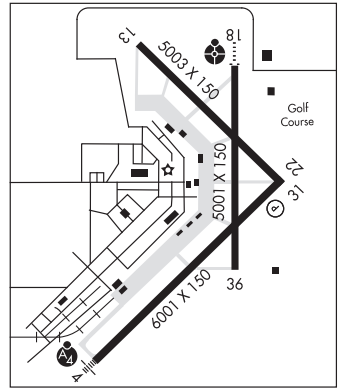
279°-350° byd 40 NM blo 3,400'

279°-350° byd 59 NM

**LAWRENCE COUNTY NDB (MHW) 227** TNZ N36°12.42' W90°55.39' 180° 4.9 NM to fld. 262/1E. NDB unmonitored

2300-1300Z†.

**LOC 111.1** I-ARG Rwy 18. LOC unmonitored 2300-1300Z†.



**WARREN MUNI** (3M9) 3 S UTC-6(-5DT) N33°33.63' W92°05.12'  
235 B NOTAM FILE JBR

MEMPHIS  
L-18F  
IAP

**RWY 03-21:** H3829X75 (ASPH) S-4 LIRL 1.0% up NE

**RWY 03:** PAPI(P2L)—GA 3.0° TCH 40'. Trees.

**RWY 21:** PAPI(P2L)—GA 3.5° TCH 40'. Road.

**SERVICE:** FUEL 100LL LGT ACTVT LIRL and PAPI Rwy 03-21—CTAF. Rwy 03 PAPI unusbl byd 2 degs left of cntrln. Rwy 21 PAPI unusbl byd 3 degs right and left of cntrln.

**AIRPORT REMARKS:** Unattended. Self svc fuel avbl 24 hrs with credit card. For services call 870-226-6743 or after hrs 870-226-3703. Deer on and invof arpt. Ctc police 870-226-3703 to clear rwy.

**AIRPORT MANAGER:** 870-820-9119

**COMMUNICATIONS:** CTAF 122.9

Ⓜ **MEMPHIS CENTER APP/DEP CON 135.875**

**RADIO AIDS TO NAVIGATION:** NOTAM FILE JBR.

**MONTECELLO (L) DME 111.6** MON Chan 53 N33°33.72'

W91°42.93' 270° 18.5 NM to fld. 208.

