

CONTINUED FROM PRECEDING PAGE

RADIO AIDS TO NAVIGATION: NOTAM FILE ARG.

WALNUT RIDGE (VH) (H) VORTAC 114.5 ARG Chan 92 N36°06.60' W90°57.22' 285° 45.1 NM to fld. 265/4E.

TACAN AZIMUTH unusable:

011°-021° byd 15 NM blo 5,000'

VOR unusable:

010°-021° byd 59 NM blo 5,300'

011°-021° byd 8 NM blo 4,000'

022°-025° byd 46 NM blo 5,300'

026°-047° byd 40 NM

048°-052° byd 43 NM blo 12,000'

053°-078° byd 40 NM blo 2,300'

053°-078° byd 64 NM

079°-175° byd 40 NM blo 18,000'

195°-216° byd 40 NM blo 18,000'

217°-278° byd 40 NM blo 3,000'

217°-278° byd 61 NM blo 18,000'

279°-350° byd 40 NM blo 3,400'

279°-350° byd 59 NM

SALINE CO RGNL (See BENTON on page 35)

SALLY WOFFORD (See WEINER on page 88)

SEARCY CO (See MARSHALL on page 66)

SEARCY RGNL (SRC)(KSR) 3 S UTC-6(-5DT) N35°12.64' W91°44.25'

265 B TPA-1065(800) NOTAM FILE SRC

RWY 01-19: H6008X100 (ASPH) S-40, D-65, 2D-290 MIRL

0.5% up N

RWY 01: MALSR. PAPI(P4L)—GA 3.0° TCH 57'.

RWY 19: REIL. PAPI(P4L)—GA 3.0° TCH 40'. Tree.

SERVICE: S4 FUEL 100LL, JET A OX 1, 3 LGT Dusk-Dawn. MIRL Rwy

01-19 preset low intst, to incr intst ACTVT—CTAF.

AIRPORT REMARKS: Attended 1300-0000Z±. 100LL avbl self serve with credit card. For JET A fuel or svc after hours call 501-279-1080. Nmrs gyrocopter opns dalgt hrs. Nmrs student pilot opns. No line of sight btn rwy ends—small acft. Nmrs agricultural acft opns fm Feb-Nov 500 ft AGL and blw.

AIRPORT MANAGER: 501-279-1080

WEATHER DATA SOURCES: AWOS-3PT 128.325 (501) 268-4280.

COMMUNICATIONS: CTAF/UNICOM 122.7

LITTLE ROCK APP/DEP CON 119.75

CLNC DEL 119.75

CLEARANCE DELIVERY PHONE: For CD when una via freq ctc Little Rock Apch

501-379-2908 or Little Rock ATCT 501-379-2911.

RADIO AIDS TO NAVIGATION: NOTAM FILE LIT.

LITTLE ROCK (H) (H) VORTACW 115.1 LIT Chan 98 N34°48.61'

W92°09.12' 040° 31.5 NM to fld. 276/OW.

TACAN AZIMUTH unusable:

031°-080° byd 37 NM blo 2,300'

191°-235° byd 34 NM blo 2,800'

236°-285° byd 30 NM blo 4,500'

286°-359° byd 33 NM blo 4,000'

360°-030° byd 38 NM blo 3,000'

DME unusable:

031°-080° byd 37 NM blo 2,300'

081°-133° byd 39 NM blo 2,000'

191°-235° byd 34 NM blo 2,800'

236°-285° byd 30 NM blo 4,500'

286°-359° byd 33 NM blo 4,000'

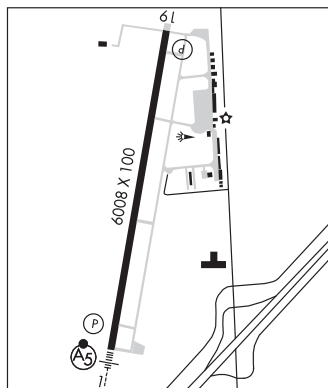
360°-030° byd 38 NM blo 3,000'

ILS/DME 110.1 I-DSY Chan 38 Rwy 01. Class IE. Unmonitored indef.

MEMPHIS

H-6J, L-16G

IAP



SHARP CO RGNL (See ASH FLAT on page 33)