

WALNUT RIDGE RGNL (ARG)(KARG) 4 NE UTC-6(-5DT) N36°07.48' W90°55.51'

MEMPHIS
H-6J, L-16G
IAP

279 B NOTAM FILE ARG

RWY 04-22: H6001X150 (ASPH) S-40, D-60, 2D-110 MIRL

RWY 04: MALSF.

RWY 22: PAPI(P4L)—GA 3.0° TCH 47'.

RWY 13-31: H5003X150 (CONC) S-40, D-60, 2D-110

RWY 13: Road.

RWY 31: Berm.

RWY 18-36: H5001X150 (CONC) S-40, D-60, 2D-110 MIRL

RWY 18: ODALS. Tree.

SERVICE: S4 FUEL 100LL, JET A LGT ACTIVATE MIRL Rwy 04-22, MALSF Rwy 04, ODALS Rwy 18—CTAF.

AIRPORT REMARKS: Attended continuously. If arpt attendant not avbl, call 870-886-5432. Self svc fuel avbl 24 hrs with credit card. Government contract fuel avbl. Twy A CLOSED indef. Arpt CLOSED to B727 acft. Agricultural ops on and invof arpt Apr-Sep. Migratory birds invof arpt Oct-Jan.

AIRPORT MANAGER: 870-886-5432

WEATHER DATA SOURCES: AWOS-3PT 135.925 (870) 886-2537.

COMMUNICATIONS: CTAF/UNICOM 122.8

RCO 122.5 (JONESBORO RADIO)

RCO 122.1R 114.5T (JONESBORO RADIO)

Ⓜ MEMPHIS CENTER APP/DEP CON 120.075

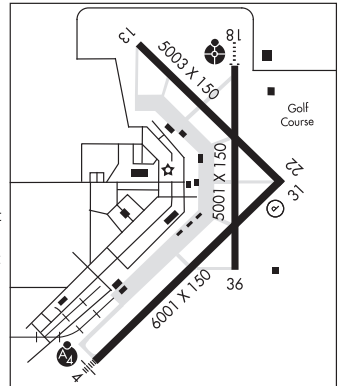
CLEARANCE DELIVERY PHONE: For CD if una to ctc on FSS freq, ctc Memphis ARTCC at 901-368-8453.

RADIO AIDS TO NAVIGATION: NOTAM FILE ARG.

(H) VORTAC 114.5 ARG Chan 92 N36°06.60' W90°57.22' 054° 1.6 NM to fld. 265/4E.

LAWRENCE COUNTY NDB (MHW) 227 TNZ N36°12.42' W90°55.39' 180° 4.9 NM to fld. 262/1E. NDB unmonitored 2300-1300Z†.

LOC 111.1 I-ARG Rwy 18. LOC unmonitored 2300-1300Z†.



WARREN MUNI (3M9) 3 S UTC-6(-5DT) N33°33.63' W92°05.12'

MEMPHIS
L-18F
IAP

235 B NOTAM FILE JBR

RWY 03-21: H3829X75 (ASPH) S-4 LIRL 1.0% up NE

RWY 03: PAPI(P2L)—GA 3.0° TCH 40'. Trees.

RWY 21: Road.

SERVICE: FUEL 100LL LGT Restriction—Rwy 03 PAPI lghts unusable byld 2 degrees left of rwy centerline per flight inspection reports processing system.

AIRPORT REMARKS: Unattended. Self svc fuel avbl 24 hrs with credit card. For services call 870-226-6743 or after hrs 870-226-3703. Deer on and invof arpt. Ctc police on 122.85 or 870-226-3703 to clear rwy.

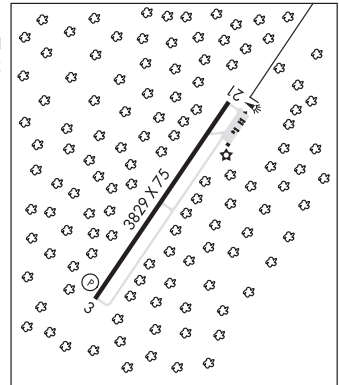
AIRPORT MANAGER: 870-820-9119

COMMUNICATIONS: CTAF 122.9

Ⓜ MEMPHIS CENTER APP/DEP CON 135.875

RADIO AIDS TO NAVIGATION: NOTAM FILE JBR.

MONTICELLO (L) VORW/DME 111.6 MON Chan 53 N33°33.72' W91°42.93' 266° 18.5 NM to fld. 208/4E.



WEINER

SALLY WOFFORD (8M2) 3 S UTC-6(-5DT) N35°35.42' W90°54.82'

MEMPHIS

245 NOTAM FILE JBR

RWY 01-19: H2330X160 (ASPH-TURF)

AIRPORT REMARKS: Unattended. Numerous agricultural acft ops. Rwy 01-19 2000 ft X 28 ft asph superimposed on Rwy 19 end, remainder turf.

AIRPORT MANAGER: (870) 930-4555

COMMUNICATIONS: CTAF 122.9

CLEARANCE DELIVERY PHONE: For CD ctc Memphis ARTCC at 901-368-8453.