

PIGGOTT MUNI (7M7) 2 E UTC-6(-5DT) N36°22.69' W90°09.97'

ST LOUIS

275 B NOTAM FILE JBR
RWY 18-36: H2550X50 (ASPH) S-10 MIRL
RWY 18: Thld dsplcd 550'.
RWY 36: Thld dsplcd 230'. Trees.

SERVICE: LGT ACTVT MIRL Rwy 18-36—CTAF.
AIRPORT REMARKS: Unattended. South end of Rwy 18-36 flooded after heavy rain.
AIRPORT MANAGER: 870-324-2358
COMMUNICATIONS: CTAF 122.9
CLEARANCE DELIVERY PHONE: For CD ctc Memphis ARTCC at 901-368-8453/8449.

PINE BLUFF

PINEBLUFF RGNL/GRIDER FLD (PBF)(KPBF) P (NG) 4 SE UTC-6(-5DT) N34°10.47' W91°56.14'

MEMPHIS
 H-6J, L-18F
 IAP

206 B TPA-1200(994) NOTAM FILE PBF
RWY 18-36: H5998X150 (ASPH) S-40, D-56, 2D-90 MIRL
RWY 18: MALSR. VASI(V4L)—GA 3.0° TCH 52'.
RWY 36: VASI(V4L)—GA 3.0° TCH 52'.

SERVICE: S4 FUEL 100LL, JET A LGT ACTIVATE MIRL Rwy 18-36 and MALSR Rwy 18—CTAF.

MILITARY— FUEL (NC-100LL, A - Self svc avbl H24 with credit card)
AIRPORT REMARKS: Attended 1400-0000Z†. For arpt attendant after hours call 870-540-9439. Self svc fuel avbl 24 hrs with credit card (100LL and JET A). Arpt CLOSED to acft with 30 or more passengers. Migratory birds invof arpt. Numerous AG ops on and invof arpt year round.

AIRPORT MANAGER: 870-534-4131
WEATHER DATA SOURCES: ASOS 120.775 (870) 536-0228.

COMMUNICATIONS: CTAF/UNICOM 123.0
PINE BLUFF RCO 122.6 (JONESBORO RADIO)

Ⓡ **LITTLE ROCK APP/DEP CON** 119.85

CLNC DEL 119.85 (501) 379-2908
CLEARANCE DELIVERY PHONE: For CD ctc Memphis ARTCC at 901-368-8453/8449.

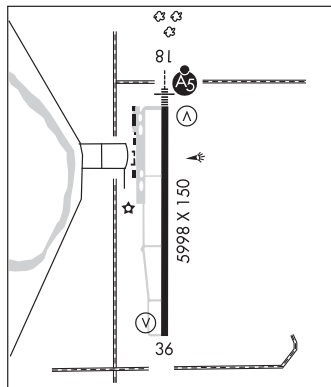
AIRSPACE: CLASS E.

RADIO AIDS TO NAVIGATION: NOTAM FILE PBF.

PINE BLUFF (L) (L) VORW/DME 116.0 PBF Chan 107 N34°14.81' W91°55.57' 182° 4.4 NM to fld. 212/4E.

VOR unusable:
 140°-145° byd 35 NM blo 4,900'
 260°-275° byd 25 NM

ILS 111.7 I-PBF Rwy 18. Class IT. Unmonitored indef.



PINEBLUFF RGNL/GRIDER FLD (See PINE BLUFF on page 71)

POCAHONTAS MUNI (M70) 1 SE UTC-6(-5DT) N36°14.73' W90°57.31'

ST LOUIS
 L-16G
 IAP

273 B NOTAM FILE JBR
RWY 18-36: H4000X75 (ASPH) S-19 MIRL
RWY 18: REIL. PAPI(P2L)—GA 3.0° TCH 43'. Tree.
RWY 36: REIL. PAPI(P2L)—GA 3.0° TCH 40'. Road.

SERVICE: S4 FUEL 100LL, JET A LGT Actvt REIL Rwy 18 and 36;
 MIRL Rwy 18-36—CTAF. PAPI Rwy 18 and 36 oper cons.
AIRPORT REMARKS: Attended 1400-2300Z†. 24 hr self serve fuel avbl with credit card (100LL, Jet A). Full svc avbl (Jet A).

AIRPORT MANAGER: 501-499-2710

COMMUNICATIONS: CTAF/UNICOM 122.8

Ⓡ **MEMPHIS CENTER APP/DEP CON** 120.075

CLEARANCE DELIVERY PHONE: For CD ctc Memphis ARTCC at 901-368-8453/8449.

RADIO AIDS TO NAVIGATION: NOTAM FILE ARG.

WALNUT RIDGE (H) (H) VORTAC 114.5 ARG Chan 92 N36°06.60' W90°57.22' 355° 8.1 NM to fld. 265/4E.

