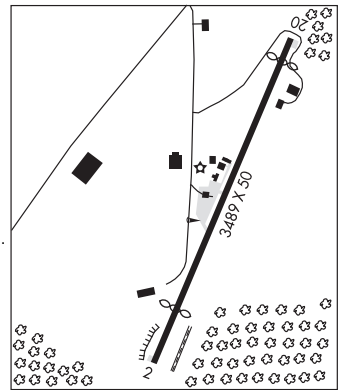


SALEM (7M9) 1 S UTC-6(-5DT) N36°21.35' W91°49.86'
 787 B NOTAM FILE JBR
RWY 02-20: H3489X50 (ASPH) MIRL
RWY 02: Thld dsplcd 1233'. Hill.
RWY 20: Thld dsplcd 248'. Tree.
SERVICE: FUEL 100LL LGT ACTIVATE MIRL Rwy 02-20—CTAF.
 Obstruction lgts OTS indef.
AIRPORT REMARKS: Unattended. Fuel: For svc call 870-371-0756 or 870-371-1025 (no fee). Deer on and invof rwy. All acft land Rwy 20, tkf Rwy 02. Rwy 02 has 3' ditch at end of rwy extending 700' along east side of rwy.
AIRPORT MANAGER: (870) 371-0756
COMMUNICATIONS: CTAF 122.9
CLEARANCE DELIVERY PHONE: For CD ctc Memphis ARTCC at 901-368-8453.
RADIO AIDS TO NAVIGATION: NOTAM FILE ARG.
WALNUT RIDGE (H) VORTAC 114.5 ARG Chan 92 N36°06.60' W90°57.22' 285° 45.1 NM to fld. 265/4E.

KANSAS CITY
 L-16G



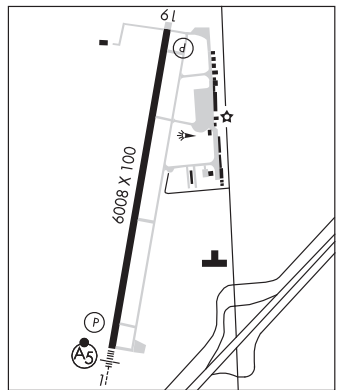
SALINE CO RGNL (See BENTON on page 32)

SALLY WOFFORD (See WEINER on page 77)

SEARCY CO (See MARSHALL on page 60)

SEARCY MUNI (SRC)(KSRC) 3 S UTC-6(-5DT) N35°12.64' W91°44.25'
 265 B TPA—1065(800) NOTAM FILE SRC
RWY 01-19: H6008X100 (ASPH) S-24 MIRL 0.5% up N
RWY 01: MALSR. PAPI(P4L)—GA 3.0° TCH 57'.
RWY 19: REIL. PAPI(P4L)—GA 3.0° TCH 40'. Tree.
SERVICE: S4 FUEL 100LL, JET A LGT Dusk-Dawn. MIRL Rwy 01-19 preset low ints, to increase ints ACTIVATE—CTAF.
AIRPORT REMARKS: Attended 1300-0000Z±. 100LL avbl self serve with credit card. For JET A fuel or svc after hours call 501-279-1080. Numerous gyrocopter ops dalgt hours. Numerous student pilot ops. No line of sight between rwy ends—small acft. Numerous agricultural acft opns from Feb-Nov 500 ft AGL and below. Rwy 01-19 markings faded.
AIRPORT MANAGER: 501-279-1080
WEATHER DATA SOURCES: AWOS-3PT 128.325 (501) 268-4280.
COMMUNICATIONS: CTAF/UNICOM 122.7
LITTLE ROCK APP/DEP CON 119.75
CLNC DEL 119.75
CLEARANCE DELIVERY PHONE: For CD when una via freq ctc Little Rock Apch 501-379-2908 or Little Rock ATCT 501-379-2911
RADIO AIDS TO NAVIGATION: NOTAM FILE LIT.
LITTLE ROCK (H) VORTAC 113.9 LIT Chan 86 N34°40.66' W92°10.83' 029° 38.7 NM to fld. 240/5E.
TACAN AZIMUTH & DME unusable:
 221°-228° byd 20 NM blo 2,800'
 229°-239° byd 20 NM blo 2,500'
 260°-280° byd 35 NM blo 5,000'
TACAN AZIMUTH unusable:
 320°-335° byd 5 NM
CERCY NDB (LOMW) 375 DS N35°07.35' W91°45.70' 011° 5.4 NM to fld. 223/2E. NOTAM FILE SRC.
ILS/DME 110.1 I-DSY Chan 38 Rwy 01. Class IE. LOM CERCY NDB. Unmonitored indef.

MEMPHIS
 H-61, L-16G
 IAP



SHARP CO RGNL (See ASH FLAT on page 31)