

## HOT SPRINGS

**MEML FLD** (HOT)(KHOT) 3 SW UTC-6(-5DT) N34°28.68' W93°05.77'

540 B Class II, ARFF Index A NOTAM FILE HOT

**RWY 05-23:** H6595X150 (ASPH-GRVD) S-75, D-125, 2S-158, 2D-210, 2D/2D2-400 PCR 370 F/B/X/U HIRL 0.6% up NE

**RWY 05:** MALSR. Rgt tfc.

**RWY 23:** PAPI(P4L)—GA 3.0° TCH 40'. Pole.

**RWY 13-31:** H4098X100 (ASPH) S-28, D-36, 2D-63

PCR 28 F/B/Y/U MIRL 0.4% up NW

**RWY 13:** REIL. Trees. Rgt tfc.

**RWY 31:** Pole.

**RUNWAY DECLARED DISTANCE INFORMATION**

**RWY 05:** TORA-6595 TODA-6595 ASDA-6595 LDA-6595

**RWY 13:** TORA-3210 TODA-4098 ASDA-4098 LDA-4098

**RWY 23:** TORA-6595 TODA-6595 ASDA-6235 LDA-6235

**RWY 31:** TORA-4098 TODA-4098 ASDA-4098 LDA-3210

**SERVICE:** S4 FUEL 100LL, JET A LGT ACTVT HIRL Rwy 05-23, MIRL

Rwy 13-31, MALSR Rwy 05, PAPI Rwy 23, REIL Rwy 13—CTAF.

Rwy 23 PAPI unusbl byd 6° right of cntrln.

**AIRPORT REMARKS:** Attended 1100-0400Z†. Fuel: 100LL: for fuel aft hrs call 501-617-0324.

**AIRPORT MANAGER:** 501-321-6750

**WEATHER DATA SOURCES:** ASOS 119.925 (501) 624-7633.

**COMMUNICATIONS:** CTAF/UNICOM 123.0

RCO 122.1R 110.0T (JONESBORO RADIO)

® **MEMPHIS CENTER APP/DEP CON** 128.475

**CLEARANCE DELIVERY PHONE:** For CD ctc Memphis ARTCC at 901-368-8453.

**AIRSPACE:** CLASS E svc 1200-0400Z†; other times CLASS G.

**RADIO AIDS TO NAVIGATION:** NOTAM FILE HOT.

**HOT SPRINGS (L) (L) VOR/DME** 110.0 HOT Chan 37 N34°28.72' W93°05.44' at fld. 529/4E.

VOR unusable:

030°-045° byd 25 NM

056°-074° byd 20 NM blo 6,500'

075°-095° byd 15 NM blo 6,500'

096°-140° byd 11 NM blo 3,000'

141°-187° byd 14 NM blo 5,000'

141°-227° byd 20 NM blo 3,500'

141°-227° byd 26 NM blo 5,500'

228°-311° byd 20 NM blo 3,500'

312°-345° byd 6 NM blo 4,500'

312°-345° byd 15 NM blo 5,500'

312°-345° byd 32 NM blo 9,500'

346°-055° byd 20 NM blo 3,500'

349°-359° byd 20 NM blo 4,500'

DME unusable:

025°-055° byd 32 NM blo 4,500'

056°-070° byd 35 NM blo 6,000'

071°-095° byd 35 NM blo 4,000'

096°-140° byd 13 NM blo 4,000'

096°-140° byd 8 NM blo 3,000'

184°-215° byd 15 NM blo 7,500'

184°-215° byd 35 NM blo 3,000'

316°-055° byd 15 NM blo 7,500'

316°-055° byd 18 NM blo 4,500'

316°-055° byd 20 NM blo 9,500'

316°-055° byd 28 NM blo 11,500'

316°-055° byd 35 NM blo 17,500'

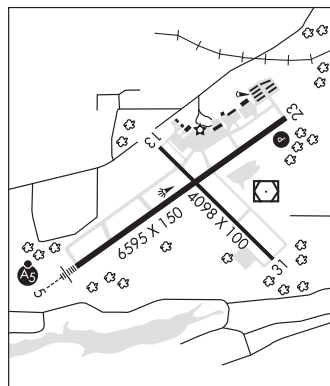
316°-055° byd 5 NM blo 5,500'

345°-360° byd 35 NM

**HOSSY NDB (LOMW)** 385 HO N34°25.35' W93°11.38' 053° 5.7 NM to fld. 471/1E.

mnrtd by HOT & LIT ATCT

**ILS/DME** 111.5 I-HOT Chan 52 Rwy 05. Class IA. LOM HOSSY NDB. ILS and LOM unmonitored.



**MEMPHIS**  
H-61, L-17E  
IAP

**HOWARD CO** (See NASHVILLE on page 70)