

LAKEVIEW

GASTONS (3M0) 1 S UTC-6(-5DT) N36°20.94' W92°33.35'

479 TPA—1300(821) NOTAM FILE JBR

RWY 06-24: 3200X55 (TURF)

RWY 06: Road.

RWY 24: Tree.

SERVICE: FUEL 100LL

AIRPORT REMARKS: Attended 1230-0300Z. Fuel avbl dalgt only. Rwy 24 has 20' drop 50' from end of rwy. All acft land Rwy 24, takeoff Rwy 06.

AIRPORT MANAGER: 870-431-5202

COMMUNICATIONS: CTAF/UNICOM 122.8

CLEARANCE DELIVERY PHONE: For CD ctc Memphis ARTCC at 901-368-8453/8449.

KANSAS CITY

LASKY N34°40.14' W92°18.32' NOTAM FILE LIT.

NDB (LOMW) 353 LI 048° 5.4 NM to Bill And Hillary Clinton Ntl/Adams Fld. 248/OE.

MEMPHIS

L-18F

LAWRENCE CO N36°12.42' W90°55.39' NOTAM FILE ARG.

NDB (MHW) 227 TNZ 180° 4.9 NM to Walnut Ridge Rgnl. 262/1E. NDB unmonitored 2300-1300Z.

ST LOUIS

L-16G

LITTLE ROCK

BILL AND HILLARY CLINTON NTL/ADAMS FLD (LIT)(KLIT) 2 E UTC-6(-5DT) N34°43.77'

W92°13.49'

266 B LRA Class I, ARFF Index C NOTAM FILE LIT

RWY 04L-22R: H8273X150 (CONC-GRVD) S-75, D-200, 2S-175, 2D-350 HIRL CL

RWY 04L: MALS. RVR-TMR Thld dsplcd 297'. Railroad.

RWY 22R: ALSF2. TDZL. RVR-TMR Rgt tfc.

RWY 04R-22L: H8251X150 (CONC-GRVD) S-75, D-200, 2S-175, 2D-350 HIRL CL

RWY 04R: MALS. PAPI(P4R)—GA 3.0° TCH 50'. RVR-TR Thld dsplcd 1050'. Pole. Rgt tfc.

RWY 22L: MALSF. PAPI(P4L)—GA 3.0° TCH 50'. RVR-TR Trees.

RWY 18-36: H6224X150 (CONC-GRVD) S-75, D-100, 2S-127, 2D-135 MIRL

RWY 18: PAPI(P4L)—GA 3.0° TCH 50'. Tree.

RWY 36: VASI(V4L)—GA 4.0° TCH 64'. Thld dsplcd 100'. Trees.

RUNWAY DECLARED DISTANCE INFORMATION

RWY 04L:TORA-8273 TODA-8273 ASDA-8273 LDA-7976

RWY 04R:TORA-8250 TODA-8250 ASDA-8250 LDA-7200

RWY 18: TORA-6060 TODA-6060 ASDA-6060 LDA-6060

RWY 22L:TORA-7200 TODA-7200 ASDA-7200 LDA-7200

RWY 22R:TORA-8273 TODA-8273 ASDA-8273 LDA-8273

RWY 36: TORA-6224 TODA-6224 ASDA-6224 LDA-6060

ARRESTING GEAR/SYSTEM

RWY 22R: EMAS

SERVICE: S4 FUEL 100LL, JET A OX 1, 3

AIRPORT REMARKS: Attended continuously. Large concentrations of birds invof arpt most activity between SR-SS up to 1500' MSL. Be alert North Little Rock Muni arpt is lctd 6 miles north-northwest with similar rwy configurations. Twy A 315' south of Twy L intersection to Rwy 36 clsd except acft with wingspan less than 79'. No general aviation parking on terminal or cargo ramp. Cargo and terminal ramps are non-movement areas. Landing fee. Flight Notification Service (ADCUS) available.

AIRPORT MANAGER: 501-372-3439

WEATHER DATA SOURCES: ASOS (501) 376-0247 LLWAS.

COMMUNICATIONS: D-ATIS 125.65 (501) 379-2915 UNICOM 122.95

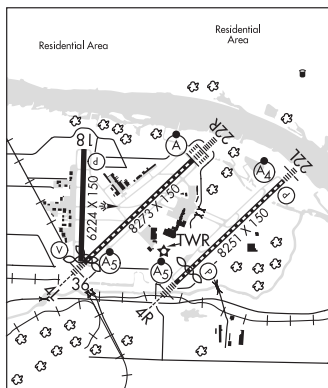
LITTLE ROCK RCO 122.55 (JONESBORO RADIO)

Ⓡ LITTLE ROCK APP/DEP CON 135.4 (040°-239°) 119.5 (240°-039°)

TOWER 118.7 GND CON 121.9 CLNC DEL 118.95 PRE TAXI CLNC 118.95

PDC

CLEARANCE DELIVERY PHONE: For CD when una via freq ctc Little Rock Apch 501-379-2908 or Little Rock ATCT 501-379-2911.



MEMPHIS

H-6I, L-18F

IAP, AD

CONTINUED ON NEXT PAGE

CONTINUED FROM PRECEDING PAGE

AIRSPACE: CLASS C svc ctc APP CON.

RADIO AIDS TO NAVIGATION: NOTAM FILE LIT.

LITTLE ROCK (H) VORTACW 113.9 LIT Chan 86 N34°40.66' W92°10.83' 320° 3.8 NM to fld. 240/5E.

TACAN AZIMUTH & DME unusable:

221°-228° byd 20 NM blo 2,800'

229°-239° byd 20 NM blo 2,500'

260°-280° byd 35 NM blo 5,000'

TACAN AZIMUTH unusable:

320°-335° byd 5 NM

LASKY NDB (LOMW) 353 LI N34°40.14' W92°18.32' 048° 5.4 NM to fld. 248/0E.

ILS/DME 110.3 I-LIT Chan 40 Rwy 04L. Class IA. LOM LASKY NDB. DME also serves Rwy 22R. DME unusable byd 30° left and byd 15° right of course.

ILS/DME 111.3 I-CNL Chan 50 Rwy 04R. Class IA.

ILS/DME 110.7 I-BWY Chan 44 Rwy 22L. Class IB. LOC offset 1.87 degs.

ILS/DME 110.3 I-AAY Chan 40 Rwy 22R. Class IIIE. DME also serves Rwy 04L.

LITTLE ROCK AFB (LRF)(KLRF) AF (ANG) 1 SE UTC-6(-5DT) N34°55.05' W92°08.70'

312 B TPA—See Remarks NOTAM FILE LRF Not insp.

RWY 07-25: H12000X200 (CONC) PCN 38 R/D/W/T HIRL

RWY 07: ALSF (NSTD) PAPI(P4L)—GA 2.5° TCH 49'. RVR-T

RWY 25: SSALR. PAPI(P4L)—GA 2.5° TCH 44'. RVR-T Rgt tfc.

RWY 071-251: H3499X60 (ASPH)

SERVICE: LGT SFL ints unctd may be turned off O/R. NSTD infra-red lgt co-lctd with Rwy 07, 25 and 250° edge lgt and one NSTD infra-red strobe lctd end of Rwy 07 and 250° ovrn. Infra-red strobe lctd end of Rwy 25 co-ctd with rwy end lgt. These lgt are vis only thru NVD. Rwy 07 NSTD ALSF-1 (missing last centerline barrette prior to thld). Rwy 25 ILS and PAPI GS not coincidental. Rwy 25 SSALR NSTD-12 lgt bars and no pre-thld and terminating bars. **MILITARY—JASU 5(A/M 32A-86) FUEL A-Min POL capability 2200-0600Z‡ Mon-Fri, exp 2-4 hr delay dur lcl flying. FLUID SP PRESAIR LHOX LOX OIL O-133-148-156 TRAN ALERT Svc avbl 1300-0100Z‡ Mon thru Fri, no weekend support. After hr support for Higher HQ msn only.**

NOISE: Noise abatement: Departing heavy acft climb rwy heading to 1500' AGL prior to turning on course.

MEMPHIS

H-6I, L-18F

DIAP, AD

CONTINUED ON NEXT PAGE