

**VERNON**

**WILBARGER CO** (F05) 4 N UTC-6(-5DT) N34°13.54' W99°17.03'

**DALLAS-FT WORTH**

1265 B NOTAM FILE F05

H-6H, L-17B

**RWY 02-20:** H5099X100 (ASPH) S-30, D-40, 2D-60 MIRL

IAP

**RWY 02:** Road.

**RWY 20:** VASI(V4L)—GA 3.0° TCH 25'. Road.

**RWY 16-34:** H4304X80 (ASPH) S-10 MIRL

**RWY 16:** Road.

**SERVICE:** FUEL 100LL, JET A+

**AIRPORT REMARKS:** Attended Mon-Sat 1400-2300Z±. Seasonal extsv aerial ag ops. 100LL self-serve. 100LL, Jet A+ full serve; aft hrs svc call 940-839-6365. Rwy 02-20 grass encroaching 13 ft each side.

**AIRPORT MANAGER:** 940-552-2182

**WEATHER DATA SOURCES:** AWOS-3 118.525 (940) 552-8600.

**COMMUNICATIONS:** CTAF/UNICOM 122.8

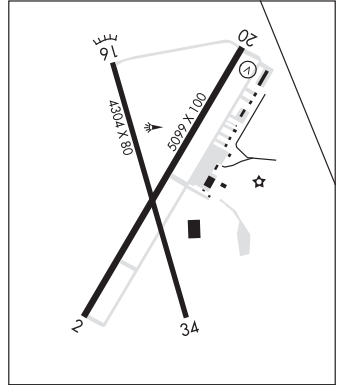
Ⓡ **ALTUS APP/DEP CON** 125.1 (Mon-Fri 1500-0830Z± clsd weekends and holidays)

Ⓡ **FORT WORTH CENTER APP/DEP CON** 128.4 133.5 (Mon-Fri 0830-1500Z±, 24 hrs weekends and holidays)

**CLEARANCE DELIVERY PHONE:** For CD ctc Fort Worth ARTCC at 817-858-7584.

**RADIO AIDS TO NAVIGATION:** NOTAM FILE SPS.

**WICHITA FALLS (H) (H) VORTACW** 112.7 SPS Chan 74 N33°59.24' W98°35.61' 283° 37.2 NM to fld. 1133/10E.



**VICTORIA RGNL** (VCT)(KVCT) 5 NE UTC-6(-5DT) N28°51.25' W96°55.12'

**HOUSTON**

115 B TPA—See Remarks Class I, ARFF Index A NOTAM FILE VCT

H-7C, L-201, 21A

**RWY 13-31:** H9111X150 (ASPH-GRVD) S-28, D-49, 2D-87 HIRL

IAP, AD

**RWY 13:** MALSR.

**RWY 31:** PAPI(P4L)—GA 3.0° TCH 55'. Rgt tfc.

**RWY 18-36:** H4908X75 (ASPH-GRVD) S-28, D-49, 2D-87 MIRL

**RWY 18:** REIL. PAPI(P2L)—GA 3.0° TCH 40'. Fence.

**RWY 36:** REIL. PAPI(P2L)—GA 3.0° TCH 40'. Pole.

**RUNWAY DECLARED DISTANCE INFORMATION**

**RWY 13:** TORA-9111 TODA-9111 ASDA-9111 LDA-9111

**RWY 18:** TORA-4908 TODA-4908 ASDA-4908 LDA-4908

**RWY 31:** TORA-9111 TODA-9111 ASDA-9111 LDA-9111

**RWY 36:** TORA-4908 TODA-4908 ASDA-4908 LDA-4908

**SERVICE:** S2 FUEL 100LL, JET A LGT HIRL Rwy 13-31 preset low intst, to incr intst and actvt MALSR Rwy 13—CTAF. MIRL Rwy 18-36 preset med intst only. PAPI Rwy 31, 18 and 36 opr consly.

**AIRPORT REMARKS:** Attended Mon-Fri 1200-0300Z±. Ad ap bird act. Between 0400-1300Z± all unscheduled air carrier ops with more than 9 passenger seats contact ARFF 361-582-5889. TPA for jets 1715(1600); for turbo prop, light aircraft, rotorcraft 1215(1100).

**AIRPORT MANAGER:** 361-575-4558

**WEATHER DATA SOURCES:** ASOS 119.025 (361) 578-9916.

**COMMUNICATIONS:** CTAF 126.075 ATIS 119.025 UNICOM 122.7

RCO 122.2 (MONTGOMERY COUNTY RADIO)

Ⓡ **HOUSTON CENTER APP/DEP CON** 135.05

**TOWER** 126.075 (1300-0400Z±) **GND CON** 120.525

**CLEARANCE DELIVERY PHONE:** For CD if una ctc on FSS freq, ctc Houston ARTCC at 281-230-5622.

**AIRSPACE:** CLASS D svc 1300-0400Z±; other times CLASS E.

**RADIO AIDS TO NAVIGATION:** NOTAM FILE VCT.

(L) (L) **VOR/DME** 109.0 VCT Chan 27 N28°54.02' W96°58.74' 125° 4.2 NM to fld. 125/6E.

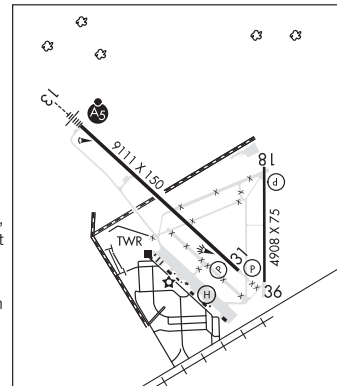
VOR unusable:

345°-355° byd 30.0 NM

**ILS/DME** 111.5 I-VCT Chan 52 Rwy 13. Class IE. Unmonitored when ATCT clsd.

• • • • •

**HELIPAD H1:** H60X60 (ASPH)



**VULTURES ROW** (See SANGER on page 419)