

TEMPLE

DRAUGHN—MILLER CENTRAL TEXAS RGNL (TPL)(KTPL) 5 NW UTC-6(-5DT) N31°09.11'

SAN ANTONIO
H-6H, L-19C, 21A
IAP

W97°24.46'

682 B NOTAM FILE TPL

RWY 16-34: H7000X150 (ASPH-GRVD) S-55, D-70, 2D-110 MIRL

RWY 16: MALSR.

RWY 34: PAPI(P4L)—GA 3.0° TCH 34'.

RWY 03-21: H4740X100 (ASPH) S-31, D-37 MIRL

RWY 21: PAPI(P4L)—GA 3.0° TCH 47'. Trees.

RUNWAY DECLARED DISTANCE INFORMATION

RWY 03: TORA-4740 TODA-4740 ASDA-4740 LDA-4740

RWY 16: TORA-6301 TODA-6301 ASDA-6301 LDA-6301

RWY 21: TORA-4740 TODA-4740 ASDA-4740 LDA-4740

RWY 34: TORA-6301 TODA-6301 ASDA-6301 LDA-6301

SERVICE: S4 FUEL 100LL, JET A, A1+ LGT Dusk-0400Z‡. ACTVT
PAPI Rwy 21—CTAF. Aft 0400Z‡ MIRL Rwy 16-34 preset low intst;
to incr intst and ACTVT MALSR Rwy 16—CTAF. MIRL Rwy 03-21 not
avbl aft 0400Z‡.

AIRPORT REMARKS: Attended 1300-0200Z‡. PAEW adj all twys and rwys.
Gldr opn 1.5 miles north of Rwy 16 thld. ARFF not avbl
0400-1100Z‡. ARFF protection meets Index B. Military contract fuel
avbl.

AIRPORT MANAGER: 254-298-5350

WEATHER DATA SOURCES: AWOS-3PT 134.975 (254) 774-8337.

COMMUNICATIONS: CTAF/UNICOM 123.0

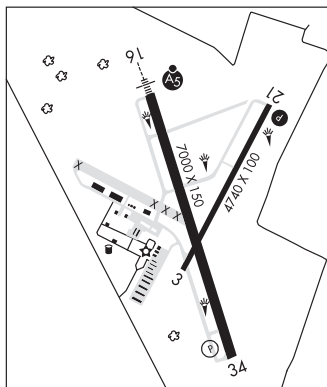
RCO 122.6 (SAN ANGELO RADIO)

Ⓡ GRAY APP/DEP CON 120.075 CLNC DEL 125.9

AIRSPACE: CLASS E svc 1200-0500Z‡; other times CLASS G.

RADIO AIDS TO NAVIGATION: NOTAM FILE TPL.

TEMPLE (L) DME 110.4 TPL Chan 41 N31°12.56' W97°25.50' 165° 3.6 NM to fld. 710.

ILS/DME 111.5 I-TPL Chan 52 Rwy 16. Class IE. LOC unusable byd 20° right of course, Fort Hood MOA.
Unmonitored.

TERLINGUA RANCH (See ALPINE on page 238)

TERRELL CO (See DRYDEN on page 291)

TERRELL MUNI (TRL)(KTRL) 1 SE UTC-6(-5DT) N32°42.51' W96°16.03'

DALLAS—FT WORTH
H-6H, L-17D, A
IAP

474 B NOTAM FILE TRL

RWY 18-36: H5006X75 (ASPH) S-30 MIRL

RWY 18: RLLS. REIL. PAPI(P4L)—GA 3.0° TCH 32'. Trees.

RWY 36: REIL. PAPI(P4R)—GA 3.0° TCH 31'. Trees.

SERVICE: S4 FUEL 100LL, JET A LGT MIRL Rwy 18-36 preset low
intst; to incr intst and actvt RLLS Rwy 18; PAPI Rwy 18 and
36—CTAF.

AIRPORT REMARKS: Attended 1400-0200Z‡. Birds on and invof arpt. For
attendant after hours call 972-835-5395/5408.

AIRPORT MANAGER: (972) 551-6614

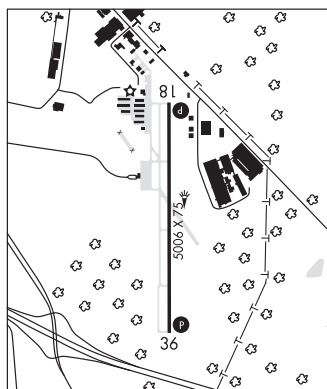
WEATHER DATA SOURCES: ASOS 119.275 (972) 551-1334.

COMMUNICATIONS: CTAF/UNICOM 122.8

Ⓡ FORT WORTH CENTER APP/DEP CON 132.025

CLEARANCE DELIVERY PHONE: For CD etc Fort Worth ARTCC at
817-858-7584.

RADIO AIDS TO NAVIGATION: NOTAM FILE FTW.

CEDAR CREEK (L) (L) VORTACW 114.8 CQY Chan 95 N32°11.14'
W96°13.09' 349° 31.4 NM to fld. 400/6E.

TERRY CO (See BROWNFIELD on page 258)

TEXAS GULF COAST RGNL (See ANGLETON/LAKE JACKSON on page 242)