

**BLYTHEVILLE**

**ARKANSAS INTL** (BYH)(KBYH) 3 NW UTC-6(-5DT) N35°57.86' W89°56.64'

**MEMPHIS**  
H-6J, L-16H  
IAP

254 B NOTAM FILE BYH  
**RWY 18-36:** H11602X150 (CONC) S-155, D-235, 2D-455  
HIRL(NSTD)

**RWY 36:** VASI(V4L)—GA 3.0° TCH 51'.  
**SERVICE:** S5 **FUEL** 100LL, JET A **LGT** Dusk-Dawn. Actvt HIRL Rwy 18-36—CTAF. Rwy 18-36 Nstd HIRL; lctd 77' fm rwy edge and nstd dstc fm cntrln. Dpt perception problems may exist durg pds of darkness. Rwy 36 VASI OTS indefly.

**AIRPORT REMARKS:** Attended Mon-Fri 1400-2300Z. Arpt unattended holidays. Fuel avbl 24 hrs self serve with credit card (100 LL). No fee charged for svc after hrs ctc/leave msg 870-532-5628. Twy A btn Twy B and Twy D tkof and ldg avbl to mil acft.

**AIRPORT MANAGER:** 870-532-5628

**COMMUNICATIONS:** CTAF/UNICOM 122.7

Ⓜ **MEMPHIS CENTER APP/DEP CON** 134.65

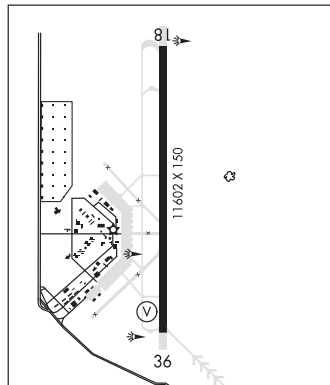
**CLEARANCE DELIVERY PHONE:** For CD ctc Memphis ARTCC at 901-368-8453/8449.

**RADIO AIDS TO NAVIGATION:** NOTAM FILE DYR.

**DYERSBURG (L) (L) VORTACW** 116.8 DYR Chan 115 N36°01.11' W89°19.06' 261° 30.7 NM to fld. 389/3E.

VOR UNUSABL:  
080°-104°

ILS/DME 110.3 I-BYH Chan 40 Rwy 18. Class IT. Unmonitored.



**BLYTHEVILLE MUNI** (HKA)(KHKA) 3 E UTC-6(-5DT) N35°56.43' W89°49.85'

**MEMPHIS**  
L-16H  
IAP

256 B TPA—See Remarks NOTAM FILE HKA

**RWY 18-36:** H4999X75 (ASPH) S-15 MIRL

**RWY 18:** PAPI(P4L)—GA 3.0° TCH 48'.

**RWY 36:** PAPI(P4L)—GA 3.0° TCH 48'. Tree.

**SERVICE:** S2 **FUEL** 100LL, JET A **LGT** ACTIVATE MIRL Rwy 18-36—CTAF. PAPI Rwy 18 and Rwy 36 opr continuously. Wind indicator lgt temporarily OTS.

**AIRPORT REMARKS:** Attended 1330-2330Z. For arpt attendant after hours call 870-740-0798/0660. Numerous agricultural acft ops from Feb-Nov 250' AGL and below, right and left TPA.

**AIRPORT MANAGER:** 870-763-0200

**WEATHER DATA SOURCES:** ASOS 135.025 (870) 763-8206.

**COMMUNICATIONS:** CTAF/UNICOM 123.05

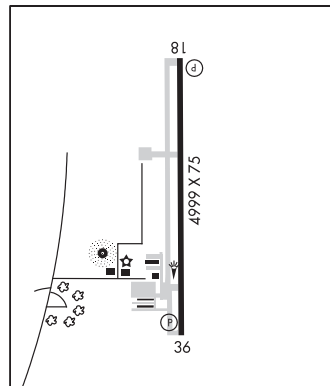
**MEMPHIS CENTER APP/DEP CON** 134.65

**CLEARANCE DELIVERY PHONE:** For CD ctc Memphis ARTCC at 901-368-8453/8449.

**RADIO AIDS TO NAVIGATION:** NOTAM FILE DYR.

**DYERSBURG (L) (L) VORTACW** 116.8 DYR Chan 115 N36°01.11' W89°19.06' 257° 25.4 NM to fld. 389/3E.

VOR UNUSABL:  
080°-104°



**BOONE CO** (See HARRISON on page 52)

**BOONEVILLE MUNI** (4M2) 3 E UTC-6(-5DT) N35°08.97' W93°51.80'

**MEMPHIS**  
L-17E

468 B NOTAM FILE JBR

**RWY 09-27:** H3254X50 (ASPH) MIRL 0.6% up W

**RWY 09:** Trees.

**RWY 27:** Trees.

**SERVICE:** S4 **FUEL** 100LL **LGT** ACTIVATE MIRL Rwy 09-27—CTAF.

**AIRPORT REMARKS:** Attended Mon-Fri 1400-2300Z. Self-serve fuel avbl 24 hrs with credit card.

**AIRPORT MANAGER:** 479-518-5890

**COMMUNICATIONS:** CTAF/UNICOM 122.8

**CLEARANCE DELIVERY PHONE:** For CD ctc Razorback Apch at 479-649-2416, when Apch clsd ctc Memphis ARTCC at 901-368-8453/8449.

**RADIO AIDS TO NAVIGATION:** NOTAM FILE FSM.

**FORT SMITH (L) (L) VORTACW** 110.4 FSM Chan 41 N35°23.30' W94°16.29' 118° 24.6 NM to fld. 432/7E.