

GREENWOOD—LEFLORE (GWO)(KGWO) 6 E UTC-6(-5DT) N33°29.60' W90°05.20'

MEMPHIS

162 B NOTAM FILE GWO MON Airport

H-6J, L-18G

RWY 18-36: H6501X150 (ASPH) S-100, D-176, 2S-175, 2D-300,

IAP, AD

2D/2D2-560 HIRL

RWY 18: MALS.R.

RWY 36: REIL. PAPI(P4L)—GA 3.0° TCH 50'.

RWY 05-23: H5011X150 (ASPH) S-30 MIRL 0.3% up NE

RWY 05: VASI(V4L)—GA 3.0° TCH 33'. Trees.

RWY 23: REIL. PVASI(P5IR). Trees.

SERVICE: S4 FUEL 100LL, JET A, A1+ LGT When twr clsd, actvt
 MALS.R Rwy 18; PAPI Rwy 36; MIRL Rwy 05-23; HIRL Rwy
 18-36—CTAF. VASI Rwy 05 opr consly. Rwy 05-23 lgts OTS indef.

AIRPORT REMARKS: Attended continuously. CLSD 2 days each at
 Thanksgiving and Christmas, 1 day for New Year's. Fuel avbl Mon-Fri
 1500-0000Z†, Sat-Sun 1600-2200Z†. Fee for fuel aft hrs call
 662-392-3988, 662-392-8899 or 662-455-5530 for svc aft hrs.
 Powerplant and airframe repairs in emerg or by appt. AMGR limits GWT
 Rwy 05-23 to S-42, D-60 in unusual situations. Pilots must provide
 their own tiedown ropes.

AIRPORT MANAGER: 662-453-1526

WEATHER DATA SOURCES: ASOS 119.975 (662) 453-3304.

COMMUNICATIONS: CTAF 118.35 UNICOM 122.95

RCO 122.2 (GREENWOOD RADIO)

Ⓜ MEMPHIS CENTER APP/DEP CON 132.5

TOWER 118.35 (1400-0000Z†) GND CON 125.55 CLNC DEL 125.55

CLEARANCE DELIVERY PHONE: For CD ctc Memphis ARTCC at 901-368-8453/8449.

AIRSPACE: CLASS D svc 1400-0000Z†; other times CLASS E.

RADIO AIDS TO NAVIGATION: NOTAM FILE GWO.

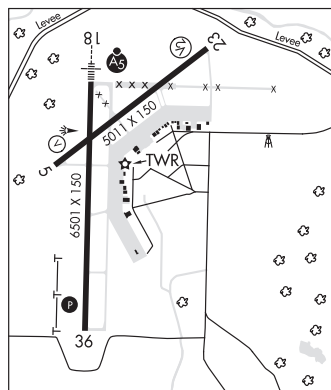
SIDON (VH) (H) VORTAC 114.7 SQS Chan 94 N33°27.83' W90°16.64' 077° 9.7 NM to fld. 127/3E.

VOR unusable:

059°-069° byd 40 NM

TEOCK NDB (LOMw) 349 GW N33°35.52' W90°05.06' 182° 5.9 NM to fld. 140/1W.

ILS 111.3 I-GWO Rwy 18. Class IT. LOM TEOCK NDB.

**GRENADA MUNI** (GNF)(KGNF) 3 N UTC-6(-5DT) N33°49.95' W89°47.89'

MEMPHIS

208 B NOTAM FILE GWO

H-6J, L-18G

RWY 13-31: H7000X150 (ASPH) S-60, D-200, 2S-175, 2D-300

IAP

MIRL

RWY 13: MALS.R. VASI(V4L)—GA 3.0° TCH 52'.

RWY 31: VASI(V4L)—GA 3.0° TCH 56'. Trees.

RWY 04-22: H4998X99 (ASPH) S-60, D-200, 2S-175, 2D-300

RWY 04: Trees.

RWY 22: Thld dsplcd 272'. Road.

SERVICE: FUEL 100LL, JET A

AIRPORT REMARKS: Attended Mon-Sat on call 662-230-3646, Sun
 1900-2300Z†. Birds and deer invof arpt. Aerobatic acft dalgt hrs;
 7000 ft and blw within 3 NM of arpt. Extsv agriculture ops invof arpt
 SR-SS Mar-Oct. For fuel call 662-230-3646; aft hrs call
 662-417-7029 or 662-699-9460. Rwy 13 and 31 200 ft by 150 ft
 asph ovrn avbl. Rwy 04-22 asph cracked and has depressions. Rwy
 04-22 markings faded. Pilots musts prvd their own tiedown ropes.

AIRPORT MANAGER: 662-227-8402

WEATHER DATA SOURCES: AWOS-3PT 118.025 (662) 227-3407.

COMMUNICATIONS: CTAF/UNICOM 122.8

Ⓜ MEMPHIS CENTER APP/DEP CON 128.5

CLEARANCE DELIVERY PHONE: For CD ctc Memphis ARTCC at
 901-368-8453/8449.

RADIO AIDS TO NAVIGATION: NOTAM FILE GWO.

SIDON (VH) (H) VORTAC 114.7 SQS Chan 94 N33°27.83' W90°16.64' 044° 32.6 NM to fld. 127/3E.

VOR unusable:

059°-069° byd 40 NM

