

CONTINUED FROM PRECEDING PAGE

HOQUIAM (VH) (H) VORTACW 117.7 HQM Chan 124 N46°56.82' W124°08.96' 119° 20.1 NM to fld. 10/19E.
 VOR unusable:
 017°-024° byd 40 NM
 037°-042° byd 40 NM
 053°-058° byd 40 NM
 066°-079° byd 40 NM
 081°-091° byd 40 NM blo 4,000'
 081°-091° byd 55 NM blo 5,000'
 081°-091° byd 62 NM
 092°-137° byd 40 NM
 154°-157° byd 40 NM
 195°-208° byd 40 NM
 268°-273° byd 40 NM
 357°-004° byd 40 NM

SOUTHWEST WASHINGTON RGNL (See KELSO on page 241)

SPANAWAY

SHADY ACRES (3B8) 3 SE UTC-8(-7DT) N47°04.22' W122°22.27'

SEATTLE

445 NOTAM FILE SEA

RWY 16-34: H1800X20 (ASPH) LIRL

RWY 16: Trees.

RWY 34: Thld dsplcd 200'. Road. Rgt tfc.

AIRPORT REMARKS: Unattended. Arprt clsd to mil helicopters. Civ hls fly in fixed wing tfc pats due to ltd vis. Twrs lctd: 2100 ft NE, 160 ft AGL red/w. Lgtd at ngt; 2700 ft E 150 ft AGL, lgtd at ngt. Power plants with emissions that may not be visible 0.5 and 1 statute mile northeast of arprt. Dsplcd thld marked with NSTD chevrons. Rwy 16 ID is NSTD distance from rwy end. Trees and bldgs in trsn fsn.

AIRPORT MANAGER: 253-720-4546

COMMUNICATIONS: CTAF 122.9

CLEARANCE DELIVERY PHONE: For CD ctc Seattle Apch at 206-214-4723.

SPOKANE

FELTS FLD (SFF)(KSFF) 4 NE UTC-8(-7DT) N47°40.98' W117°19.35'

SEATTLE

1957 B LRA NOTAM FILE SFF

L-13B

RWY 04L-22R: H4499X140 (CONC) S-30 MIRL

IAP, AD

RWY 04L: REIL. VASI(V2L)—GA 3.0° TCH 50'.

RWY 22R: MALSR. VASI(V2R)—GA 3.5° TCH 44'. Tree. Rgt tfc.

RWY 04R-22L: H2650X75 (ASPH) S-30

RWY 04R: Rgt tfc.

RWY 22L: PAPI(P4L)—GA 3.8° TCH 39'. Tree.

RUNWAY DECLARED DISTANCE INFORMATION

RWY 04L:TORA-4499 TODA-4499 ASDA-4499 LDA-4499

RWY 04R:TORA-2650 TODA-2650 ASDA-2650 LDA-2650

RWY 22L:TORA-2650 TODA-2650 ASDA-2650 LDA-2650

RWY 22R:TORA-4499 TODA-4499 ASDA-4499 LDA-4499

SERVICE: S4 FUEL 100LL, JET A1+ OX 3, 4 LGT When twr clsd
 ACTIVATE MIRL Rwy 04L-22R, MALSR Rwy 22R and REIL 04L-CTAF.
 VASI Rwy 04L and VASI Rwy 22R opr continuously. PAPI Rwy 22L opr SR-SS. Rwy 22L PAPI unusable byd 5° right side of cntrln.

AIRPORT REMARKS: Attended 1400-0400Z†. Waterfowl and birds on and invof arprt. Lgtd crane 1953' MSL (200' AGL) 1.25 NM east indef. Acft with tail heights over 20' must ctc twr prior to taxi. Twr unable to provide ATC svc on perimeter twy due to movement of uncltd gnd tfc. Portions of Twy B not visible from twr. PPR for rotorwing acft conducting hover ops above 10' AGL in non-movement area ctc twr. Cold temperature airport. Altitude correction required at or below -16C. Flight Notification Service (ADCUS) avbl.

AIRPORT MANAGER: 509-455-6419

WEATHER DATA SOURCES: ASOS 120.55 (509) 535-3290.

COMMUNICATIONS: CTAF 132.5 ATIS 120.55 UNICOM 122.95

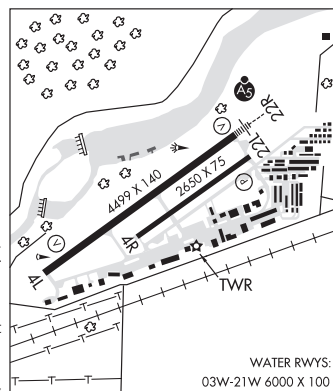
SPOKANE RCO 122.6 (SEATTLE RADIO)

Ⓡ **SPOKANE APP/DEP CON** 133.35

TOWER 132.5 (1400-0400Z†) **GND CON** 121.7 **CLNC DEL** 121.7

CLEARANCE DELIVERY PHONE: For CD if una to ctc on FSS freq, ctc Seattle ARTCC at 253-351-3694.

AIRSPACE: CLASS D svc 1400-0400Z†; other times CLASS E.



CONTINUED ON NEXT PAGE

CONTINUED FROM PRECEDING PAGE

VOR TEST FACILITY (VOT) 114.0

RADIO AIDS TO NAVIGATION: NOTAM FILE GEG.

SPOKANE (VH) (H) VORTACW 115.5 GEG Chan 102 N47°33.90' W117°37.61' 046° 14.2 NM to fld. 2756/14E.

VOR unusable:

007°-022° byd 26 NM blo 7,000'

029°-041° byd 40 NM

307°-337° byd 30 NM blo 9,000'

342°-007° byd 18 NM blo 7,000'

342°-007° byd 25 NM

ILS/DME 111.7 I-FLZ Chan 54 Rwy 22R. Class IB. LOC unusable 0.2 NM fm rwy thld. DME unusable 15° rgt of course.

COMM/NAV/WEATHER REMARKS: Emerg frequency 121.5 not avbl at twr.

WATERWAY 03W-21W: 6000X100 (WATER)

WATERWAY 21W: Rgt tfc.

SEAPLANE REMARKS: Extv boating in area of water rwy. Water lvl on river may be lwrd by corps of engr. Water area adj to arpt not ctld or mntnd by arpt. Waterway elev 1910 estd. Waterway 03W-21W water rwy advsy svc only area not visible from twr. Ctc Felts twr 132.5 for tfc data.

SPOKANE INTL (GEG)(KGE) P (ARNG) 5 SW UTC-8(-7ZD) N47°37.14' W117°32.11'

2385 B LRA Class I, ARFF Index C NOTAM FILE GEG MON Airport

SEATTLE
H-1C, L-13B
IAP, AD

RWY 03-21: H11002X150 (ASPH-CONC-GRVD) S-200, D-200, 2S-175, 2D-400 PCN 88 R/B/W/T HIRL CL

RWY 03: ALSF2. TDZL. PAPI(P4L)—GA 3.0° TCH 69'. RVR-TMR Rgt tfc. 0.5% down.

RWY 21: ALSF2. TDZL. PAPI(P4L)—GA 3.0° TCH 73'. RVR-TMR Ground. 0.6% up.

RWY 08-26: H8199X150 (ASPH-GRVD) S-150, D-180, 2D-280 PCN 40 R/B/X/T MIRL

RWY 08: REIL. PAPI(P4R)—GA 3.0° TCH 45'. Rgt tfc.

RWY 26: REIL. PAPI(P4L)—GA 3.0° TCH 48'.

RUNWAY DECLARED DISTANCE INFORMATION

RWY 03: TORA-11002 TODA-11002 ASDA-11002 LDA-11002

RWY 08: TORA-8199 TODA-8199 ASDA-8199 LDA-8199

RWY 21: TORA-11002 TODA-11002 ASDA-11002 LDA-11002

RWY 26: TORA-8199 TODA-8199 ASDA-8199 LDA-8199

SERVICE: S4 FUEL 100, 100LL, JET A OX1, 2, 3, 4 MILITARY— FUEL A, A+ (C509-455-5204, avbl 1400-0600Z†, hol 1600-0000Z†, OT 2 hr PN, \$90 per hr fee) (NC-100, 100LL).

AIRPORT REMARKS: Attended continuously. Waterfowl and birds on and invof arpt. Twy K unlgtd on ramp side along maintenance ramp and is unavbl blo 1200' RVR unless under escort by "follow me." Portions of Twy K not visible from twr. Rwy 21 ALSF2 may be opr as SSALR during favorable wx conditions. Be alert to turbulence over smoke stacks 1 mile east of arpt. U.S. Customs user fee arpt. Flight Notification Service (ADCUS) avbl.

AIRPORT MANAGER: (509) 455-6418

WEATHER DATA SOURCES: ASOS (509) 742-2544 WSP.

COMMUNICATIONS: ATIS 124.325 509-838-0895 UNICOM 122.95

RCO 122.2 (SEATTLE RADIO)

Ⓡ APP/DEP CON 123.75 205°-025° 133.35 26°-204°

TOWER 118.3 GND CON 121.9 CLNC DEL 127.55

AIRSPACE: CLASS C svc ctc APP CON.

VOR TEST FACILITY (VOT) 109.6

RADIO AIDS TO NAVIGATION: NOTAM FILE GEG.

(VH) (H) VORTACW 115.5 GEG Chan 102 N47°33.90' W117°37.61' 035° 4.9 NM to fld. 2756/14E.

VOR unusable:

007°-022° byd 26 NM blo 7,000'

029°-041° byd 40 NM

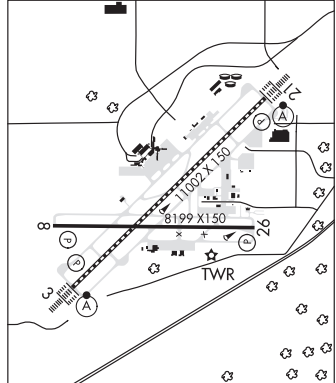
307°-337° byd 30 NM blo 9,000'

342°-007° byd 18 NM blo 7,000'

342°-007° byd 25 NM

ILS/DME 111.1 I-OLJ Chan 48 Rwy 03. Class IIIE.

ILS/DME 111.1 I-GEG Chan 48 Rwy 21. Class IIIE.



STAMPEDE PASS SMP N47°15.98' W121°22.07'/3964
ASOS 135.275 (360) 886-2758

SEATTLE
L-1D