

PORTAGE LAKE MUNI SPB (87B) 1 W UTC-5(-4DT) N46°45.62' W68°28.85'
 608 NOTAM FILE BGR
WATERWAY 02W-20W: 5000X500 (WATER)
WATERWAY 15W-33W: 5000X500 (WATER)
SEAPLANE REMARKS: Unattended. Shallow water 2' to 3' deep near dock, watch for rocks.
AIRPORT MANAGER: 207-435-4361
COMMUNICATIONS: CTAF 122.9
CLEARANCE DELIVERY PHONE: For CD ctc Boston ARTCC at 603-879-6859.

HALIFAX

PORTLAND INTL JETPORT (PWM)(KPWM) 2 W UTC-5(-4DT) N43°38.74' W70°18.52'

NEW YORK

76 B LRA Class I, ARFF Index C NOTAM FILE PWM MON Airport

H-11D, L-32H

RWY 11-29: H7200X150 (ASPH-GRVD) S-75, D-169, 2S-175,

2D-300 PCN 96 F/C/X/T HIRL CL 0.5% up W

RWY 11: ALSF2. TDZL. PAPI(P4R)—GA 3.0° TCH 52'. RVR-TMR

Trees.

RWY 29: MALSR. PAPI(P4R)—GA 3.0° TCH 50'. RVR-TMR Tree.

RWY 18-36: H6100X150 (ASPH-GRVD) S-75, D-165, 2D-300

PCN 91 F/C/X/T MIRL

RWY 18: REIL. PAPI(P4L)—GA 3.0° TCH 50'. Thld dspcd 450'. Tree.

RWY 36: REIL. PAPI(P4L)—GA 3.25° TCH 54'. Thld dspcd 500'. Tree.

LAND AND HOLD—SHORT OPERATIONS

| LDG RWY | HOLD—SHORT POINT | AVBL LDG DIST |
|---------|------------------|---------------|
| RWY 11 | 18-36 | 5800 |
| RWY 18 | 11-29 | 3100 |

RUNWAY DECLARED DISTANCE INFORMATION

RWY 11: TORA-7200 TODA-7200 ASDA-7200 LDA-7200

RWY 18: TORA-6100 TODA-6100 ASDA-5600 LDA-5150

RWY 29: TORA-7200 TODA-7200 ASDA-7200 LDA-7200

RWY 36: TORA-6100 TODA-6100 ASDA-5650 LDA-5150

SERVICE: S4 FUEL 100LL, JET A OX 1, 3 LGT Rwy 11 ALSF-II

becomes SSALS when ATCT clsd. When twr clsd ACTVT MALSR Rwy 29; REIL Rwy 18 and 36; TDZL Rwy 11; Centerline Rwy 11-29; PAPI Rwy 11, 29, 18 and 36; HIRL Rwy 11-29; MIRL Rwy 18-36—CTAF.

NOISE: For noise abatement info, ctc the arpt ops cntr on freq 129.95 or call 207-756-8310. Prior to any run-up ctc the arpt ops on freq 129.95 or call 207-756-8310. Noise abatement procs in afct for ldg Rwy 11 and dep Rwy 29.

AIRPORT REMARKS: Attended 1100-0300Z†. Birds ocly on and invof arpt. For fuel aft hrs call 207-774-6318 or 207-523-0988. Acft emerges btn 0500-1045Z† call Portland Air Rescue 207-874-8576. No touch and go lds during snow removal. PAEW adj to rwys ngts; gnd vehicles monitor 120.9 when ATCT clsd. Twr occasionally stays open byd 0500Z† during adverse wx. Prior to any run-up ctc arpt ops on freq 129.95 or call 207-756-8310. Pushback onto Twy A rqr fdm trml Gates 1-8, Twy C rqr fdm trml Gate 1A. Acft may not push short of Twy A fm Gates 1-8 nor short of Twy C fm Gate 1A. Ctc Gnd 121.9. Adz pushback opr you have Alpha or Charlie prior to push. Landing rights arpt (LRA): GA cust/img fac lctd at cargo apron. Acft arrg/depq cust must use extreme ctn when navigating on the cargo apron to minimize jet blast exposure to hngrs and acft. Flight Notification Svc (ADCUS) avbl.

AIRPORT MANAGER: 207-756-8310

WEATHER DATA SOURCES: ASOS 119.05 (207) 874-7914.

COMMUNICATIONS: CTAF 120.9 ATIS 119.05 (207) 775-1039 UNICOM 122.95

Ⓜ APP/DEP CON 119.75

Ⓜ BOSTON CENTER APP/DEP CON 128.2 (0500-1045Z†)

TOWER 120.9 (1045-0500Z†) GND CON 121.9

CLNC DEL 121.9

CLEARANCE DELIVERY PHONE: For CD when ATCT clsd, ctc Boston ARTCC at 603-879-6859.

AIRSPACE: CLASS C svc ctc APP CON svc 1045-0500Z†; other times CLASS E.

VOR TEST FACILITY (VOT) 111.0



CONTINUED ON NEXT PAGE

CONTINUED FROM PRECEDING PAGE

RADIO AIDS TO NAVIGATION: NOTAM FILE BGR.

KENNEBUNK (VH) (DH) VORW/DME 117.1 ENE Chan 118 N43°25.54' W70°36.81' 062° 18.7 NM to fld.
192/17W.

DME unusable:

030°-184° byd 25 NM blo 2,000'
185°-230° byd 25 NM blo 2,500'
268°-278° byd 30 NM blo 4,600'

VOR unusable:

017°-040° byd 40 NM
130°-133° byd 40 NM
192°-202° byd 40 NM blo 2,500'
192°-202° byd 48 NM blo 5,000'
192°-202° byd 69 NM
203°-294° byd 40 NM
295°-305° byd 40 NM blo 5,000'
295°-305° byd 52 NM
306°-359° byd 40 NM

ILS/DME 109.9 I-PWM Chan 36 Rwy 11. Class IIIE.

ILS/DME 109.9 I-GCS Chan 36 Rwy 29. Class IIIE.

PRESQUE ISLE

PRESQUE ISLE SPB (83B) 2 NW UTC-5(-4DT) N46°42.36' W68°03.64'

HALIFAX

500 TPA-1800(1300) NOTAM FILE BGR

WATERWAY 01W-19W: 6000X300 (WATER)

WATERWAY 01W: Trees.

WATERWAY 19W: Trees. Rgt tfc.

SEAPLANE REMARKS: Unattended. Rising terrain west side of lake. Spb lctd NW and invof Northern Maine Rgnl Arpt.

AIRPORT MANAGER: 207-764-2550

COMMUNICATIONS: CTAF/UNICOM 122.8

CLEARANCE DELIVERY PHONE: For CD ctc Boston ARTCC at 603-879-6859.

PRESQUE ISLE INTL (PQI)(KPQI) 1 NW UTC-5(-4DT) N46°41.34' W68°02.69'

HALIFAX

534 B LRA Class I, ARFF Index A NOTAM FILE PQI MON Airport

H-110, L-321

RWY 01-19: H7441X150 (ASPH) S-100, D-150, 2D-240

IAF

PCN 94 F/A/W/T HIRL 1.1% up N

RWY 01: MALSR.

RWY 19: REIL. PAPI(P4L)—GA 3.7° TCH 50'. Trees.

RWY 10-28: H6000X100 (ASPH) S-100, D-150, 2D-240

PCN 94 F/A/W/T MIRL

RWY 10: Tree.

RWY 28: PAPI(P4L)—GA 3.0° TCH 45'. Railroad.

RUNWAY DECLARED DISTANCE INFORMATION

RWY 01: TORA-7441 TODA-7441 ASDA-7441 LDA-7441

RWY 10: TORA-6000 TODA-6000 ASDA-6000 LDA-6000

RWY 19: TORA-7441 TODA-7441 ASDA-7441 LDA-7441

RWY 28: TORA-6000 TODA-6000 ASDA-6000 LDA-6000

SERVICE: S2 FUEL 100LL, JET A LGT ACTIVATE MALSR Rwy 01, REIL

Rwy 19, PAPI Rwys 19 and 28, HIRL Rwy 01-19, MIRL Rwy

10-28-122.6.

AIRPORT REMARKS: Attended 1100-0000Z. Clsd to unskd ACR ops with more than 30 pax seats, exc PPR call arpt manager 207-764-2550.

PAEW adjacent to rwy's and twys (mowing) May 1 thru Nov 1. Ctn small

UAS act fm sfc to 400' AGL (1040' MSL) 3.5 NM S of arpt dur dalgt

hrs. Flight Notification Service (ADCUS) available.

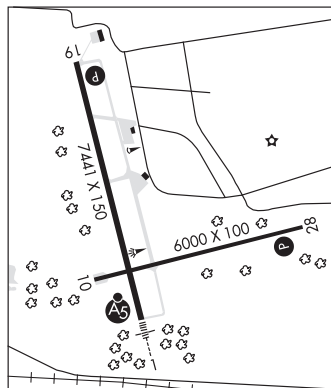
AIRPORT MANAGER: 207-764-2550

WEATHER DATA SOURCES: AWOS-3PT 118.025 (207) 764-7248.

COMMUNICATIONS: CTAF/UNICOM 122.8

Ⓡ **BOSTON CENTER APP/DEP CON** 124.75 CLNC DEL 121.6

CLEARANCE DELIVERY PHONE: For CD ctc Boston ARTCC at 603-879-6859.



CONTINUED ON NEXT PAGE