

MOUNDSVILLE

MARSHALL CO (MPG)(KMPG) 3 S UTC-5(-4DT) N39°52.85' W80°44.15'

CINCINNATI

1215 B NOTAM FILE EKN

L-29B

RWY 06-24: H3301X60 (ASPH) S-12.5 MIRL 0.6% up SW

IAP

RWY 06: PAPI(P2L)—GA 4.0° TCH 30'. P-line.

RWY 24: PAPI(P2R)—GA 3.0° TCH 46'. P-line.

SERVICE: S4 **FUEL** 100LL **LGT** ACTIVATE rtg bcn—CTAF. ACTIVATE MIRL Rwy 06-24—CTAF. PAPI Rwy 06 and 24 oper cont. Rwy 24 VGSi unusbl byd 7° left of cntrln.

AIRPORT REMARKS: Attended 1330Z±-dusk. After hrs atndt 304-312-1119 (mgr cell). Deer and birds on and invof arpt. Self svc fuel avbl 24/7 with credit card. Rwy 06-24 slopes up 0.6% from south to north. Rwy 24, due to terrain, winds may be turbulent on apch. Rwy safety area both ends have 100' drop offs 200' from thld 0B.

AIRPORT MANAGER: 304-845-0200

WEATHER DATA SOURCES: AWOS-3 119.05 (304) 845-2959.

COMMUNICATIONS: CTAF/UNICOM 122.7

CLEVELAND CENTER APP/DEP CON 126.95 or call ZOB 440-774-0442

CLEARANCE DELIVERY PHONE: For CD ctc Cleveland ARTCC at 440-774-0226.

RADIO AIDS TO NAVIGATION: NOTAM FILE CLE.

BELLAIRE (H) (H) VORW/DME 117.1 AIR Chan 118 N40°01.02' W80°49.03' 162° 9.0 NM to fld. 1307/7W.

NEW CUMBERLAND

HERRON (7G1) 3 NE UTC-5(-4DT) N40°31.99' W80°32.47'

DETROIT

1226 TPA-2001(775) NOTAM FILE EKN

RWY 04-22: H2030X20 (ASPH) RWY LGTS(NSTD) 1.0% up SW

RWY 04: Trees.

RWY 22: Trees.

RWY 01-19: 1200X24 (TURF) 1.8% up N

RWY 01: Trees.

RWY 19: Trees.

SERVICE: S2 **LGT** Arpt lgts opr dusk-0400Z±. ACTVT LIRL Rwy 04-22-123.0-5 times on/5 times off. Rwy 04-22 has lgts on SE side only.

AIRPORT REMARKS: Attended irregularly. Deer on and invof arpt. Ultralight activity. Repairs by prior arrangement. Attendant not on duty. Rwy 04-22 numbers only. Rwy 04 and 22 ends not visible fm each end. Traffic on rd crossing rwy not visible fm Rwy 04 end. Public road crosses center of afld, do not taxi on road, wing will not clear stop sign on road. Rwy 04-22 slopes up fm E to W, aprx 30'. 30' drop off at each rwy end. Overnight fee waived with minimum fuel purchase.

AIRPORT MANAGER: 304-387-0191

COMMUNICATIONS: CTAF 122.9

CLEARANCE DELIVERY PHONE: For CD ctc Pittsburgh Apch at 412-472-5591

NORTH CENTRAL WEST VIRGINIA (See CLARKSBURG on page 395)

ONA AIRPARK (See MILTON on page 401)

PARKERSBURG

MID-OHIO VALLEY RGNL (PKB)(KPKB) P (ARNG) 6 NE UTC-5(-4DT) N39°20.70' W81°26.36'

CINCINNATI

859 B Class I, ARFF Index A NOTAM FILE PKB

H-10G, 12I, L-29B

RWY 03-21: H7240X150 (ASPH-GRVD) S-85, D-100, 2D-175

IAP, AD

PCN 31 R/C/X/T HIRL 0.8% up NE

RWY 03: MALSR. PAPI(P4L)—GA 3.0° TCH 49'. RVR-TR

RWY 21: REIL. PAPI(P4R)—GA 3.0° TCH 56'. RVR-TR Thld dsplcd 460'.

RWY 10-28: H4002X150 (ASPH-GRVD) S-50, D-75, 2D-135

PCN 30 R/C/X/T HIRL

RWY 10: REIL. PAPI(P2L)—GA 3.0° TCH 46'.

RWY 28: REIL. PAPI(P2L)—GA 3.0° TCH 43'.

RUNWAY DECLARED DISTANCE INFORMATION

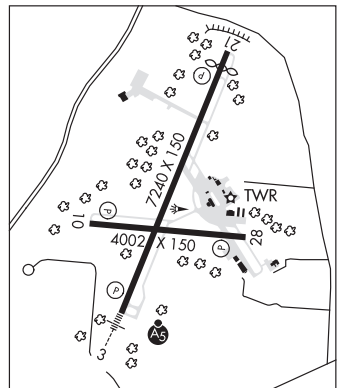
RWY 03: TORA-7240 TODA-7240 ASDA-6780 LDA-6780

RWY 10: TORA-4002 TODA-4002 ASDA-4002 LDA-4002

RWY 21: TORA-7240 TODA-7240 ASDA-7240 LDA-6780

RWY 28: TORA-4002 TODA-4002 ASDA-4002 LDA-4002

CONTINUED ON NEXT PAGE



CONTINUED FROM PRECEDING PAGE

SERVICE: S2 **FUEL** 100LL, JET A **LGT** When ATCT clsd actvt MALS Rwy 03; REIL Rwy 10 & 21; HIRL Rwy 03-21 & 10-28—CTAF. PAPI Rwy 03 & 21 opr consly. REIL Rwy 28 unavbl when ATCT clsd. Rwy 21 PAPI unusbl byd 5 degs left and 9 degs right of cntrln. Rwy 28 PAPI unusbl byd 8 degs left and 8 degs right of cntrln. **MILITARY—FUEL** A+, A, JP8 (Opr 1030-00430Z‡ C304-464-5113, OT 2 hr PN C304-464-5115 fee \$55.) (NC-100LL)

AIRPORT REMARKS: Attended continuously. Birds and deer on and invof arpt. PPR 30 min for unscheduled air carrier ops with more than 30 passenger seats, call arpt manager 304-464-5115. No ldg fee for acct less than 6,500 lbs. for acct greater than 6,500. ldg fee waived with fuel purchases.

AIRPORT MANAGER: 304-464-5113

WEATHER DATA SOURCES: ASOS (304) 464-1001

COMMUNICATIONS: CTAF 123.7 ATIS 124.35 UNICOM 122.95

PARKERSBURG RCO 122.2 (ELKINS RADIO)

Ⓡ **INDIANAPOLIS CENTER APP/DEP CON 125.55**

PARKERSBURG TOWER 123.7 (1200-0400Z‡) GND CON 126.45

CLEARANCE DELIVERY PHONE: When ATCT clsd, for CD ctc Indianapolis ARTCC at 317-247-2411.

AIRSPACE: CLASS D svc 1200-0400Z‡; other times CLASS E.

RADIO AIDS TO NAVIGATION: NOTAM FILE PKB.

PARKERSBURG (L) (L) VORW/DME 114.45 JPU Chan 91(Y) N39°26.47' W81°22.49' 211° 6.5 NM to fld. 1016/3W.

VERSI NDB (LOWW) 388 PK N39°15.24' W81°29.10' 028° 5.9 NM to fld. 812/7W.

NDB unusable:

000°-094° byd 10 NM blo 3,000'

095°-149°

150°-210° byd 10 NM

ILS 110.7 I-PKB Rwy 03. Class IB. LOM VERSI NDB. LOM unmonitored.

PARKERSBURG N39°26.47' W81°22.49' NOTAM FILE PKB.
(L) (L) VORW/DME 114.45 JPU Chan 91(Y) 211° 6.5 NM to Mid-Ohio Valley Rgnl. 1016/3W.
RCO 122.2 (ELKINS RADIO)

CINCINNATI

H-10G, 12H, L-29B

PETERSBURG

GRANT CO (W99) 1 SW UTC-5(-4DT) N38°59.70' W79°08.75'

963 B NOTAM FILE EKN

RWY 13-31: H5000X75 (ASPH) S-41, D-53.4 MIRL 0.3% up NW

RWY 13: REIL. Fence.

RWY 31: REIL. PAPI(P4L)—GA 6.5° TCH 46'. Fence. Rgt tfc.

SERVICE: S4 **FUEL** 100LL, JET A **LGT** Actvt REIL Rwy 13 and 31; PAPI Rwy 31; MIRL Rwy 13-31—CTAF.

AIRPORT REMARKS: Attended 1200-0000Z‡. Aftr hrs on call 304-209-2603. Birds on and invof arpt. 100LL self svc fuel 24/7. Glider ops. Rwy 31 rgt tfc for glider and ultra-light only. All other powered acct std lfd tfc pat. Cold temperature airport. Altitude correction required at or below -8C.

AIRPORT MANAGER: 304-257-4435

WEATHER DATA SOURCES: AWOS-3 124.475 (304) 257-2477.

COMMUNICATIONS: CTAF/UNICOM 122.8

Ⓡ **WASHINGTON CENTER APP/DEP CON 133.55**

CLEARANCE DELIVERY PHONE: For CD ctc Washington ARTCC at 703-771-3587.

RADIO AIDS TO NAVIGATION: NOTAM FILE EKN.

KESSEL (L) (L) VORW/DME 110.8 ESL Chan 45 N39°13.53' W78°59.37' 214° 15.6 NM to fld. 2590/6W.

DME unusable:

260°-270° byd 10 NM blo 6,500'

288°-295° byd 10 NM blo 6,500'

LDA/DME 111.5 I-YQ Chan 52 Rwy 31. DME unusable byd 25° left of course and byd 28° r of course. DME unusable byd 10 NM blw 4,500'; byd 13 NM blw 4,900'; byd 14 NM blw 5,200'; byd 15 NM blw 5,900'; byd 19 NM. LOC unusable byd 10 NM blw 4,200'.